

eMini-Setup

Quick Start Guide

Overview

AJA's eMini-Setup application allows you to initially communicate with and configure supported AJA products using a direct USB connection. After initial IP configuration over USB, the supported product can then be controlled using an Ethernet network and browser, to access the product's internal 'WebUI' (Web-based User Interface) server. It can thereafter be configured and operated exclusively using the WebUI. The USB cable may then be removed, if desired.

NOTE: The AJA IPT-10G2 and IPR-10G2 Series Mini-Converters may use eMini-Setup for initial configuration as well as for full operational control, in addition to their WebUI servers. Therefore if you (optionally) do not plan to use the WebUI to operate your Mini-Converter, then you may skip the IP configuration steps described in this guide, and keep the USB cable connected for eMini-Setup use.

Overview of the General Procedure

In this guide, you will find the procedure steps to complete the following:

- Acquire eMini-Setup from the AJA website;
- Install the eMini-Setup application onto a computer;
- Connect the supported product to USB;
- Launch the eMini-Setup application; and
- Configure the device IP using the 'Control Network' tab or 'Network' tab.

For some products, you can also use eMini-Setup to load updated firmware to the device, although this is typically done using the device's WebUI.

Acquiring eMini-Setup

AJA's eMini-Setup application is available for download from the AJA website. However it is not downloaded for all products from one web location. To download the latest eMini-Setup installer package for your particular AJA product, which includes the eMini-Setup application and latest release notes, follow these steps:

1. Go to: <https://www.aja.com/>
2. Navigate to page for the product you will be using with eMini-Setup. AJA products which use eMini-Setup* include those listed below.:
 - ColorBox <https://www.aja.com/products/colorbox>
 - HELO Plus <https://www.aja.com/products/helo-plus>
 - IPT-10G2 Series <https://www.aja.com/products/ipr-10g2-hdmi> **
 - IPR-10G2 Series <https://www.aja.com/products/ipr-10g2-hdmi> **
 - KUMO and KUMO CP <https://www.aja.com/products/kumo-3232>

*NOTE: *Your product may or may not appear in the above list. Use the search feature at www.aja.com to find your product and its downloads page.*

NOTE: *** The IPR-10G2 and IPT-10G2 products share the same Mini-Converter Series manual, including for both SDI and HDMI versions. Therefore if you have one of those products you may navigate to either the SDI or HDMI version product page for the correct eMini-Setup package download.*

3. Navigate to your product's Downloads page.
4. On the Downloads page, click the icon for Windows or macOS depending on which platform you are planning to use.



5. Click on the download link that appears for your chosen OS version.
6. You will see a popup to 'Sign-up with AJA!'. You may choose to either sign-up and then download, or, to skip the sign-up by clicking on 'Continue to Download without Sign-up.'
7. Download the appropriate 'AJA eMini-Setup v(n.n) for (OS)' installer file.
8. After downloading on macOS, the installer application will be automatically located in your computer's "downloads" folder, inside an 'eMini-Setup for (OS)' folder, which will include both the release notes PDF for your OS and the application installer file. (There is no need to unzip a .zip file).

After downloading on Windows, unzip the .zip file located in your computer's "downloads" folder, to see the enclosing eMini-Setup folder, release notes and installer application.

9. We recommend you check the release notes before you run the installer, to confirm eMini-Setup's compatibility with your computer hardware and OS version.

Acquiring Full Product Manual

To download the full user manual for your AJA product, which may have additional information on using all of eMini-Setup's tabs for that particular product:

1. Navigate to your product page at www.aja.com.
2. Choose Downloads.
3. Select Manuals.

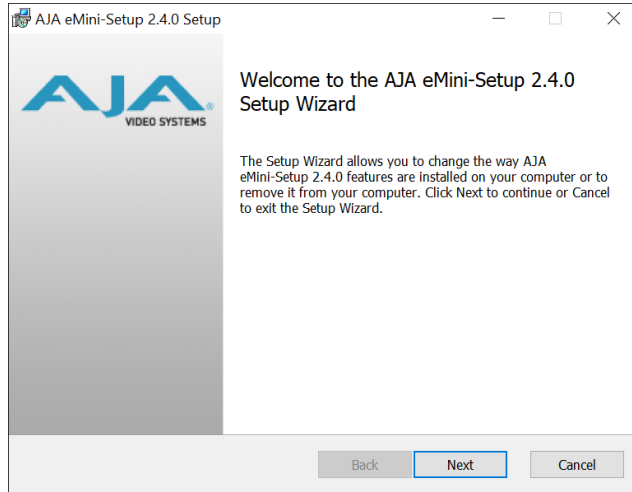
Installing eMini-Setup

PC Installation

To install eMini-Setup on a Windows PC:

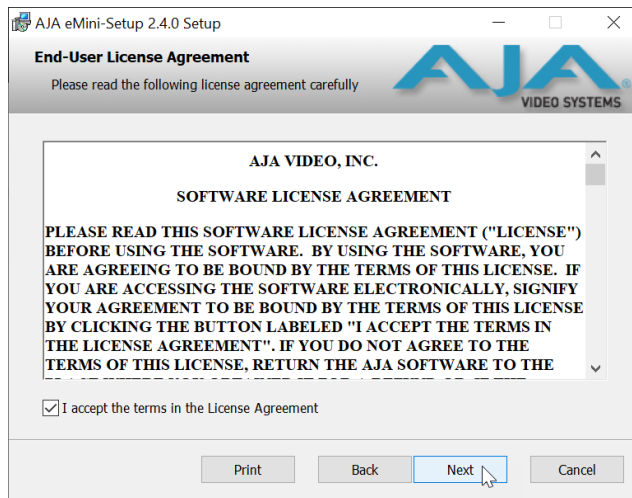
1. Download the application from the AJA website. See ["Acquiring eMini-Setup" on page 1](#).
2. Open the AJA_eMini-Setup_win.zip file.
3. Double-click on the AJA_eMini-Setup.msi file.
4. The Setup Wizard will guide you through the installation as we illustrate below.

Figure 1. eMini-Setup PC Wizard



5. Click Next to begin the Setup Wizard.

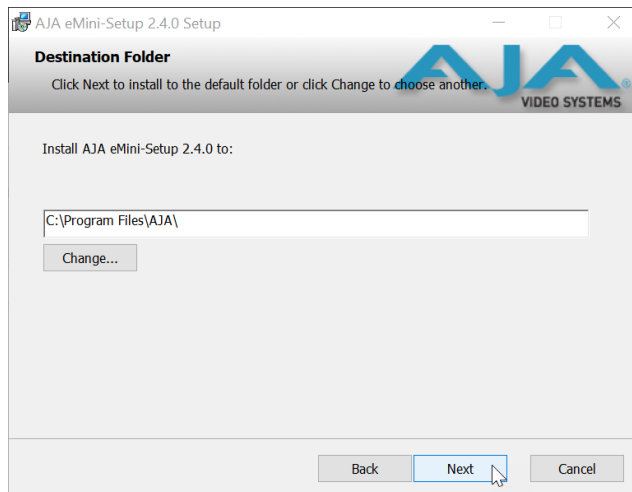
Figure 2. Software License Agreement



6. Check the 'I Accept the terms...' checkbox.

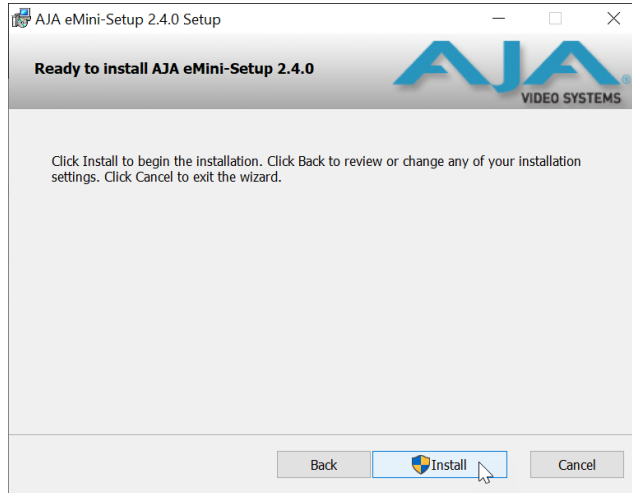
7. Click Next to accept the software license.

Figure 3. Accept Installation Location



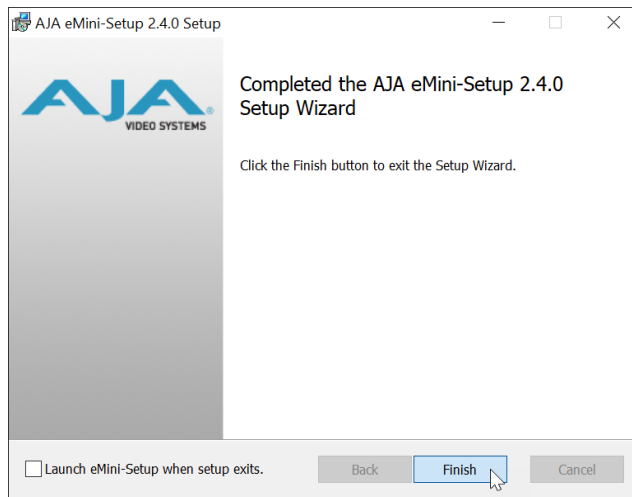
8. Click Next to accept the install location on your computer (after adjusting it if necessary).

Figure 4. Launch the installation



9. Click Install.

Figure 5. Finish the installation

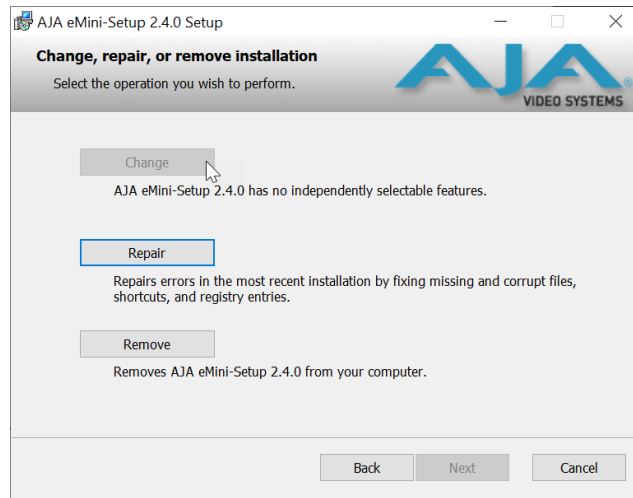


10. Click Finish.

NOTE: *If the eMini-Setup application already exists on the PC, the following dialog window appears. In some instances, Windows may require uninstalling an earlier version of eMini-Setup before installing a new version.*

Re-Installation

Figure 6. eMini-Setup Wizard, Re-installation



With this screen you can **Repair** (reinstall) or **Remove** (uninstall) eMini-Setup on the PC.

NOTE: After initial installation and/or at other times, Windows application icons can sometimes become hidden on the desktop. Several possible solutions exist, the easiest being to right-click on the desktop, select View, and checkmark 'Show Desktop Icons'.

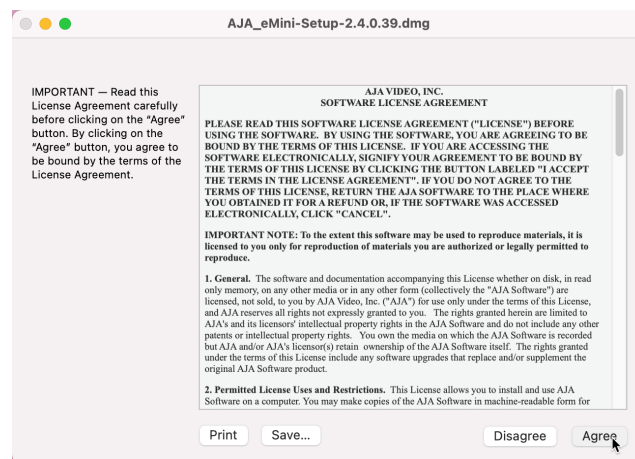
Mac Installation

To install the application on a Mac:

NOTE: Intel and Apple Silicon based CPUs are supported for use with AJA eMini-Setup software.

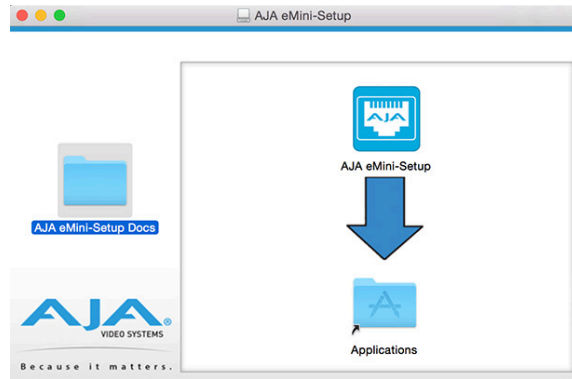
1. Download the application from the AJA website. See "[Acquiring eMini-Setup](#)" on page 1.
2. Open the eMini-Setup folder that you will find in your computer's downloads folder.
3. Double-click on the 'AJA eMini-Setup_(n.n.n.n).dmg' file.

Figure 7. Accepting the Software License



4. Click Agree.

Figure 8. eMini-Setup Mac Installer

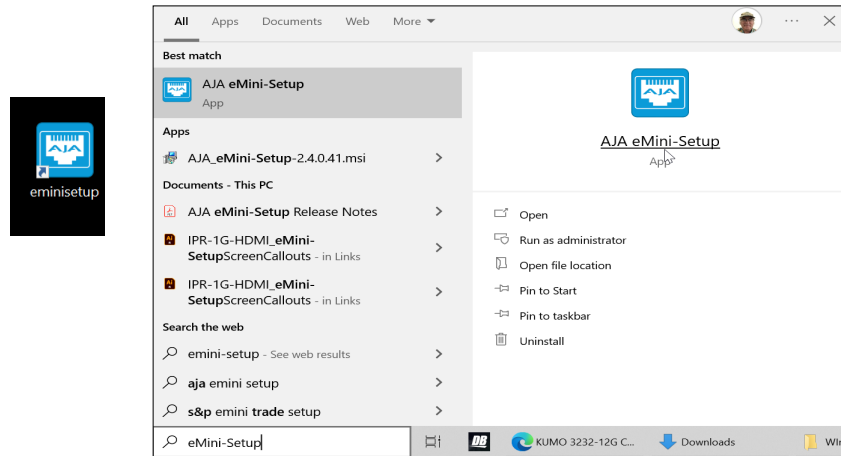


5. To complete the installation drag the "AJA eMini-Setup" icon to the Applications folder icon.

Windows Startup

To run eMini-Setup on a Windows PC, double-click on the AJA eMini-Setup icon on your desktop. Or use the Windows Task Bar Search to enter "eMini-Setup" and the Icon to launch the installed application will appear.

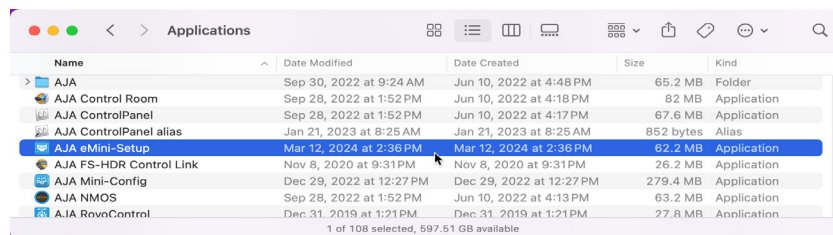
Figure 9. Launching eMini-Setup application on Windows



macOS Startup

To run eMini-Setup on a Mac, open the Applications folder and locate the AJA eMini-Setup application. Double-click the application to launch it.

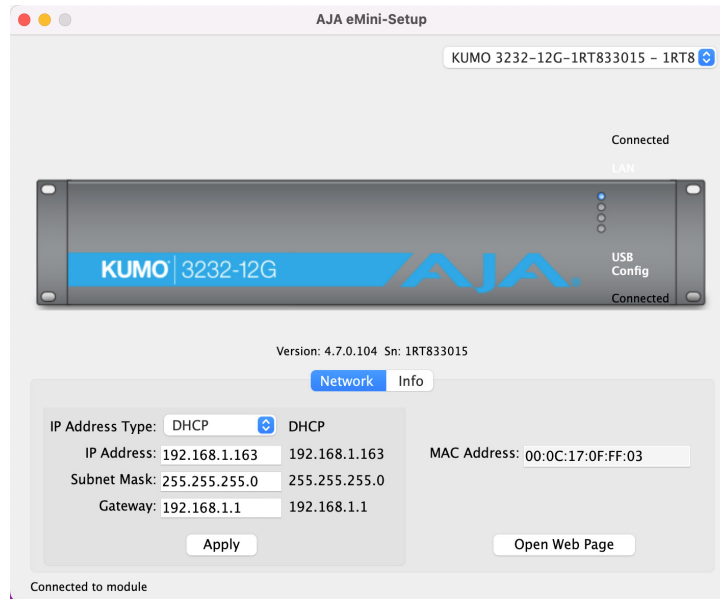
Figure 10. Launching eMini-Setup application on macOS



Using eMini-Setup for Initial IP Assignment

1. If not previously done, connect power to your AJA device.
2. Using the supplied USB cable, connect the USB port on the device to the computer running eMini-Setup.
3. Run eMini-Setup. (See Startup for either macOS or Windows, above).
4. Depending upon the AJA product, open either the "Control Network" or the "Network" tab.
5. Configure the device's network settings. For example, we show the KUMO 3232-12G Network tab below.

Figure 11. KUMO 3232-12G Network tab



NOTE: Each product's eMini-Setup Network tab may vary slightly in appearance.

DHCP will be enabled by default, and if the device is connected to a DHCP server the IP address field will populate. You may also select a manual IP Address Type and enter the address, subnet mask and gateway information on this tab.

6. Once your IP configuration is completed, type in (or Copy/Paste) the IP address into a web browser.

There is also an 'Open Web Page' button on the Network tab that will open the device's WebUI in the default web browser on your computer.

7. Use the WebUI to fully configure, control and use your AJA device.

NOTE: When using manual IP addressing, you may find it convenient to 'bookmark' or 'favorite' the IP address in your browser for easy access later. However, when using DHCP, note that bookmarks may fail later if the DHCP server reassigns the device's IP address.