

# HA5-12G Mini-Converter

## HDMI 2.0 to 12G SDI



## Installation and Operation Guide

# Notices

---

## Trademarks

---

AJA® and Because it matters.® are registered trademarks of AJA Video Systems, Inc. for use with most AJA products. AJA™ is a trademark of AJA Video Systems, Inc. for use with recorder, router, software and camera products. Because it matters.™ is a trademark of AJA Video Systems, Inc. for use with camera products.

Corvid Ultra®, Io®, Ki Pro®, KONA®, KUMO®, ROI® and T-Tap® are registered trademarks of AJA Video Systems, Inc.

AJA Control Room™, KiStor™, Science of the Beautiful™, TruScale™, V2Analog™ and V2Digital™ are trademarks of AJA Video Systems, Inc.

All other trademarks are the property of their respective owners.

## Copyright

---

Copyright © 2021 AJA Video Systems, Inc. All rights reserved. All information in this manual is subject to change without notice. No part of the document may be reproduced or transmitted in any form, or by any means, electronic or mechanical, including photocopying or recording, without the express written permission of AJA Video Systems, Inc.

## Contacting AJA Support

---

When calling for support, have all information at hand prior to calling. To contact AJA for sales or support, use any of the following methods:

Telephone	+1.530.271.3190
FAX	+1.530.271.3140
Web	<a href="https://www.aja.com">https://www.aja.com</a>
Support Email	<a href="mailto:support@aja.com">support@aja.com</a>
Sales Email	<a href="mailto:sales@aja.com">sales@aja.com</a>

# Contents

---

Notices . . . . .	2
Trademarks . . . . .	2
Copyright . . . . .	2
Contacting AJA Support . . . . .	2
Chapter 1 – Introduction . . . . .	4
Overview . . . . .	4
Default Operation . . . . .	4
AJA Mini-Config Control . . . . .	4
Features . . . . .	5
Block Diagram . . . . .	5
I/O Connections . . . . .	6
Installation . . . . .	6
Chapter 2 – Operation . . . . .	7
USB Control and Setup—Using AJA Mini-Config . . . . .	7
Acquiring AJA Mini-Config . . . . .	7
Installing AJA Mini-Config . . . . .	7
Running AJA Mini-Config . . . . .	9
Operating AJA Mini-Config . . . . .	10
Tabbed Screens . . . . .	11
Input Tab Screen . . . . .	11
EDID Tab Screen . . . . .	12
Output Tab Screen . . . . .	13
HDR Tab Screen . . . . .	15
Audio Tab Screen . . . . .	17
Update Tab Screen . . . . .	18
Software Update Procedure . . . . .	19
Info Tab Screen . . . . .	19
Appendix A – Specifications . . . . .	20
HA5-12G Family Tech Specs . . . . .	20
Appendix B – Safety and Compliance . . . . .	25
Warranty and Liability Information . . . . .	33
Index . . . . .	34

# Chapter 1 – Introduction

---



## Overview

---

AJA's HA5-12G allows users to convert an HDMI 2.0 input to two 12G-SDI single link outputs. It includes two SDI DA outputs and transmits 12G-SDI on each SDI link, reducing cable runs when transporting 4K/UltraHD SDI. HA5-12G supports up to 8-Channels of audio from the HDMI source or 2-Channel analog audio (RCA), with eight or two channels of digital embedded audio on 12G-SDI.

A Fiber SFP equipped HA5-12G-T or HA5-12G-T-ST single channel transmitter model is available, which extends HDMI source 4K signals over long distances (10 km Single Mode). The fiber output is in addition to the two coax outputs, for a total of three 12G-SDI outputs.

## Default Operation

---

The HA5-12G auto configures to the connected HDMI input (no dipswitch settings required). The auto-configure function identifies the connected input and outputs the equivalent SDI format.

## AJA Mini-Config Control

---

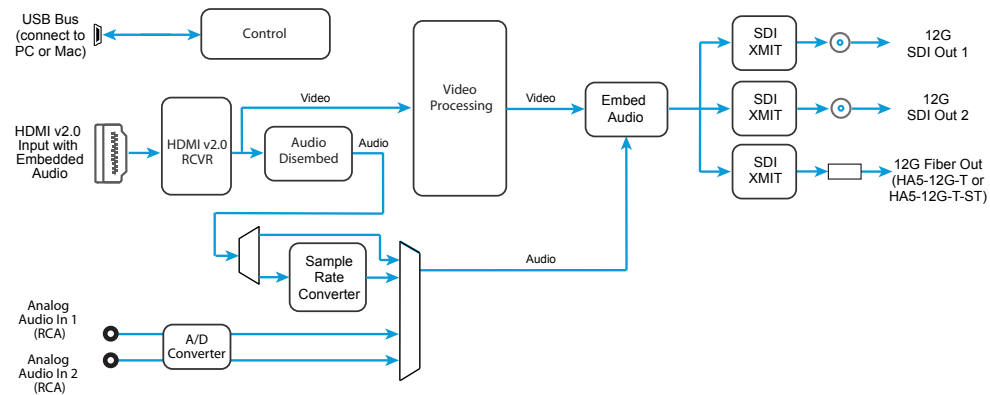
AJA's Mini-Config application is available for firmware updates and advanced configuration. Configuration set via Mini-Config is stored in the HA5-12G unit through subsequent power cycles.

# Features

- Converts HDMI 2.0 to 12G-SDI, up to 4K 60p (see "[Appendix A – Specifications](#)" on page 20 for a complete list of supported inputs).
- Supports up to 60p input at 4:4:4/4:2:2/4:2:0
- Supports 2SI (two sample interleave) 4K/UltraHD SDI mapping
- Two 12G-SDI coax outputs
- Supports simple integer/fractional frame rate conversion
- Supports EDID emulation
- Embedded audio can be selected from the HDMI or Analog audio inputs
- Supports pass-through of Dolby Digital (AC-3) and Dolby Digital Plus (E-AC-3) compressed audio, including DD+ JOC
- Fiber SFP model, HA5-12G-T, includes a 12G-SDI single mode fiber output
- Fiber SFP model, HA5-12G-T-ST, includes a 12G-SDI single mode fiber output
- Configure via USB port and supplied Mini-Config software
- Uses 5-16VDC power. The included DWP-U-R1 universal power supply is 5VDC.
- Five year warranty

# Block Diagram

Figure 1. HA5-12G Converter, Simplified Block Diagram



# I/O Connections

Figure 2. HA5-12G/HA5-12G-T Converter Connections



**NOTE:** The LOCK LED adjacent to the HDMI input connector indicates by color whether the HDMI input circuit is locked, and if so, the SDI output data rate. Off is no signal, Green is SD-SDI, Red is HD-SDI, Amber is 3G-SDI, Purple is 6G-SDI, and Blue is 12G-SDI.

## Installation

Typically, HA5-12G installation consists of the following steps:

1. Ensure the HA5-12G is disconnected from power.
2. Connect video equipment to the converter BNCs and HDMI connector.
3. Apply power to the converter (AJA power supply included).
4. The HA5-12G will now run using the default factory settings. If you wish to alter the factory settings, you'll need to:
  - Install the AJA Mini-Config software on your computer
  - Attach the HA5-12G via USB
  - Make your changes using AJA Mini-Config setup screens.

This process is detailed in ["USB Control and Setup—Using AJA Mini-Config" on page 7](#).

**NOTE:** The HA5-12G packs an unprecedented feature set into a mini converter box. As a result, the unit uses approximately 12 watts of power. It will be very warm to the touch, which is normal. The unit is engineered to operate across the full temperature range, from 0 to 40 degrees C.

**NOTE:** For highest reliability, the mini converter relies on convection cooling instead of using a built-in fan. Therefore, when installing the unit, mount in a location where it has access to air for proper cooling. Do not stack the HA5-12G with other mini converters.

# Chapter 2 – Operation

---

## USB Control and Setup—Using AJA Mini-Config

---

Your AJA Mini-Converter can be used right out of the box for some applications since it is designed to recognize inputs and perform standard actions automatically by default. However, to use its full capability, you must use AJA's Mini-Config software application for PCs and Macs. This same application can be used to update to new Mini-Converter software released by AJA.

### Acquiring AJA Mini-Config

---

AJA's Mini-Config application is available for download from the AJA website.

To download the latest AJA Mini-Config package, which includes the AJA Mini-Config application, Mini-Converter firmware, and documentation, go to:

<https://www.aja.com/en/products/mini-converters/mini-config-software>

Select either the Windows or Mac icon to download the desired version.

### Mini-Converter Documentation

---

Included with the AJA Mini-Config package is a complete set of documentation for all Mini-Converters supported by AJA Mini-Config. A .PDF of the *Installation and Operation Guide* for the currently connected Mini-Converter can be accessed from the AJA Mini-Config UI via the **Help/Manual** drop-down menu.

Documentation for all AJA Mini-Converters that use AJA Mini-Config can also be accessed directly in the AJA Mini-Config download package Documentation folder, and via the Documentation icon available on the Mac installer.

Documentation (and firmware) included with the AJA Mini-Config application are the versions available at the time of distribution. However, Mini-Converter software, firmware and documentation are updated regularly, so newer versions may exist.

To download the latest documentation for an individual Mini-Converter, go to:

<https://www.aja.com/en/category/mini-converters>

and navigate to the Support webpage of that Mini-Converter.

## Installing AJA Mini-Config

---

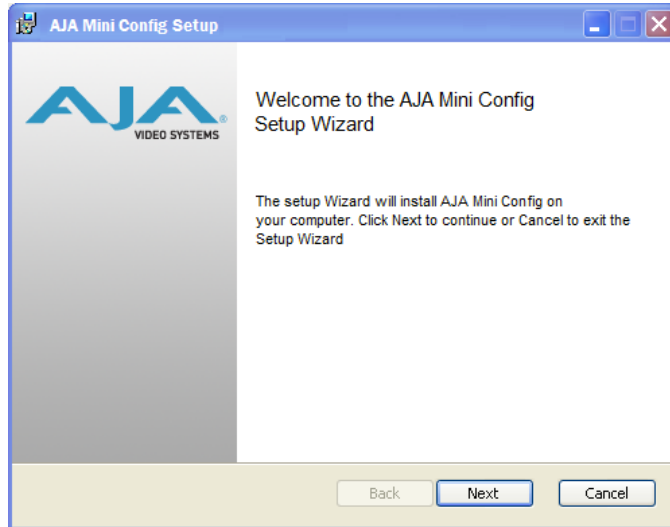
### PC Installation

---

To install AJA Mini-Config on a Windows PC:

1. Download the application from the AJA website (select the Windows icon on the AJA Mini-Config Support webpage).
2. Open the AJA\_MiniConfig.zip file
3. Double-click on the MiniInstaller.msi file.
4. A Setup Wizard will guide you through the installation.

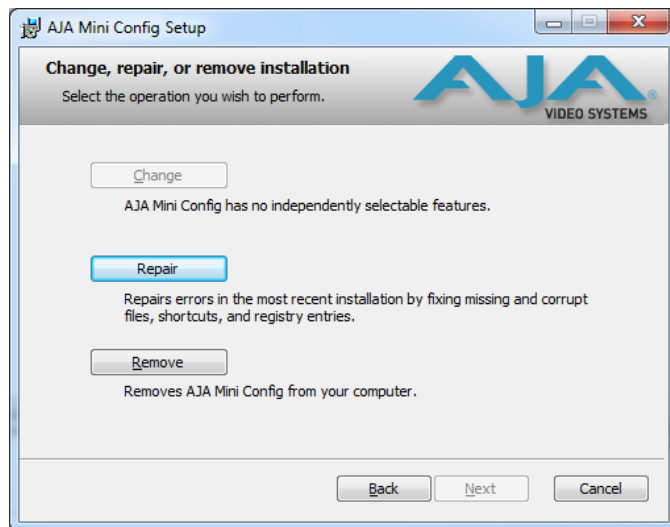
Figure 3. AJA Mini-Config PC Setup Wizard



5. Click Next to begin. Answer the questions in the subsequent dialogues. When finished, an AJA Mini-Config shortcut will be installed on the desktop, and you will be able to locate the AJA Mini-Config application in the AJA folder in the Programs listing.

*NOTE: If the AJA Mini-Config application already exists on the PC, a different Setup Wizard appears.*

Figure 4. AJA Mini-Config Setup Wizard, Reinstallation



With this screen you can **Repair** (reinstall) or **Remove** (uninstall) AJA Mini-Config on the PC.

## Mac Installation

To install the application on a Mac:

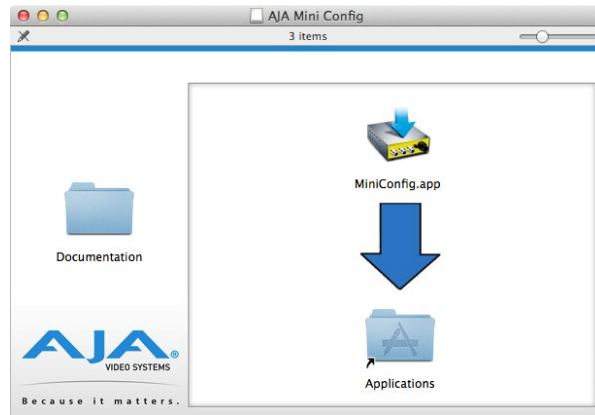
*NOTE: Macintosh computers must be Intel-based (G5, G4 and earlier models will not work with AJA Mini-Config).*

1. Download the application from the AJA website (select the Apple icon on the AJA Mini-Config Support webpage).
2. Open the AJA\_MiniConfig folder.
3. Double-click on the AJAMiniConfig.dmg file.



4. Answer the prompt and a utility program will be launched.

Figure 5. AJA Mini-Config Mac Installer



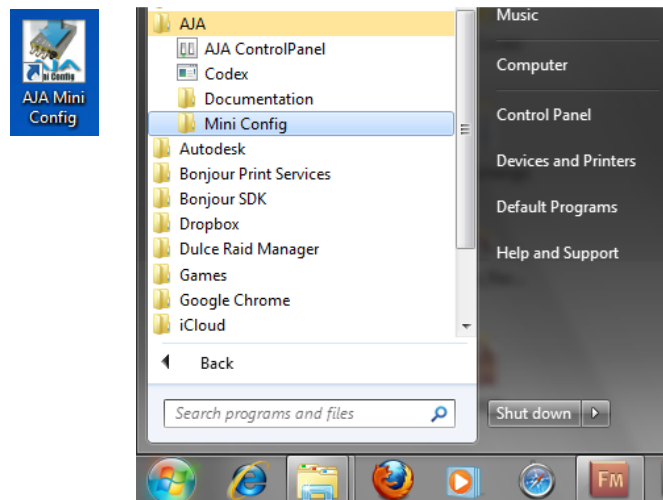
5. To complete the installation drag the “MiniConfig.app” icon to the Applications folder.

## Running AJA Mini-Config

Connect the Mini-Converter to the PC or Mac via the supplied USB cable. Connect the external power supply (supplied) to the Mini-Converter.

### PC Startup

To run AJA Mini-Config on a PC, double-click on the AJA Mini-Config icon on your desktop, or open the AJA folder in the program list and click on the AJA Mini-Config application located inside the AJA Mini-Config folder.

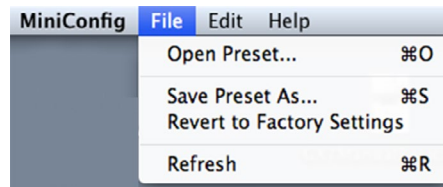


### Mac Startup

To run AJA Mini-Config on a Mac, open the Applications folder and locate the AJA Mini-Config application. Double-click the application to launch it.

### Saving Setups

A **File** drop down menu on the AJA Mini-Config application bar allows you to save the current state of the Mini-Converter to a preset file for later recall.



Using this feature you can set up the converter for different applications, storing each configuration (**Save Preset As...**) with a unique name for easy recall (**Open Preset...**).

A **Revert to Factory Settings** menu item similarly allows you to change the settings back to AJA's factory defaults.

## Operating AJA Mini-Config

The AJA Mini-Config application provides a graphic interface for viewing settings and updating software. It consists of an information area at the top that shows the available Mini-Converters attached to the computer via USB, with a graphical rendering of the selected Mini-Converter showing all the connectors and their current state.

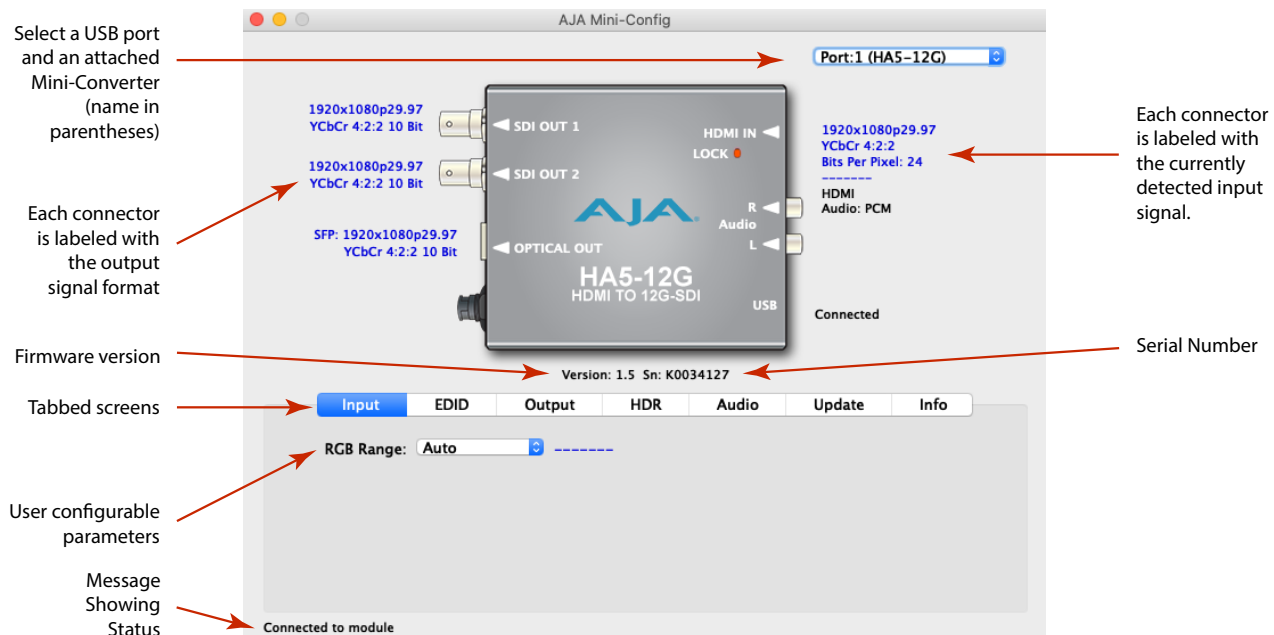
Colored text next to the connectors indicates the signal type and what the Mini-Converter is doing:

- Blue text indicates the values automatically selected
- Black text indicates values that you have manually selected
- Red text indicates the Mini-Converter is not detecting a signal, or cannot operate with the current user settings.

*NOTE: Even if no output device is detected, the SDI connector text still shows the signal it is outputting.*

Screens are virtually the same on both PC and Mac, with subtle differences that reflect the general look of the platform environment.

Figure 6. Example AJA Mini-Config Screen



Selecting a Mini-Converter with the pulldown menu causes this application to connect to the selected converter. The graphic of the Mini-Converter and text below it provides:

- Type of converter
- Firmware version
- Serial number of the unit.

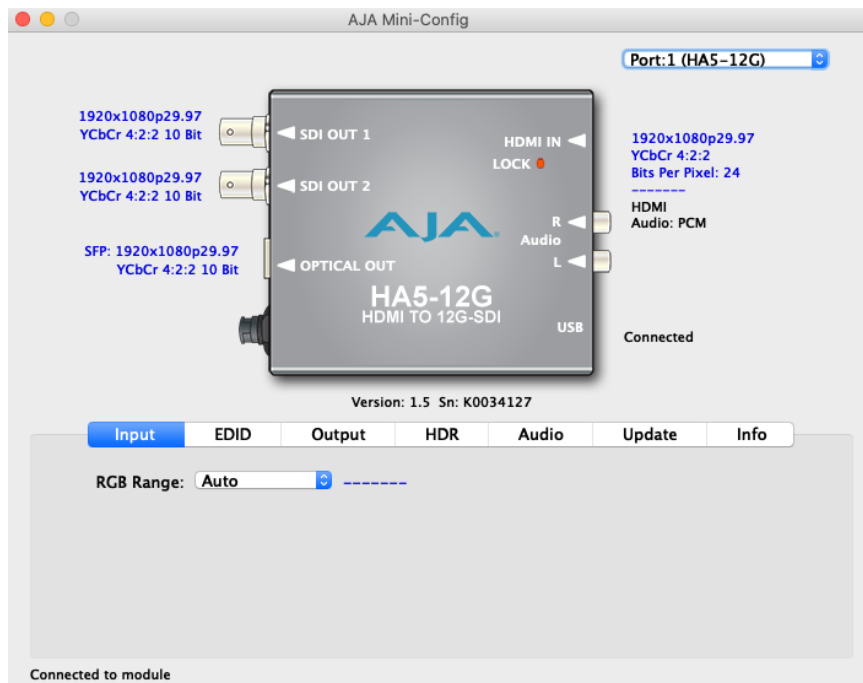
A status field at the bottom of the screen shows if your application is connected and communicating with the Mini-Converter.

When configuring the Mini-Converter, select it from the top pulldown, view the current settings and change any values. Making a change communicates that new value to the Mini-Converter's non-volatile memory.

## Tabbed Screens

The Tabs delineate control screens with groups of controls for each type of task to be performed. The controls for the actual configuration parameters are specific to each Mini-Converter type. When you Click on any of the tab buttons, the pane below the tabs will change to match your tab selection. Any changes you make are immediately applied and will be saved, overwriting previous settings.

## Input Tab Screen



### About Bits Per Pixel

With HDMI, YCbCr is always reported as 24bpp, which is 12 bit depth (whether the input signal is 8, 10, or 12 bit depth).

To determine the bit depth for RGB, divide the bpp by 3. For example:

- 24bpp = 8 bit depth
- 30bpp = 10 bit depth
- 36bpp = 12 bit depth

### RGB Range

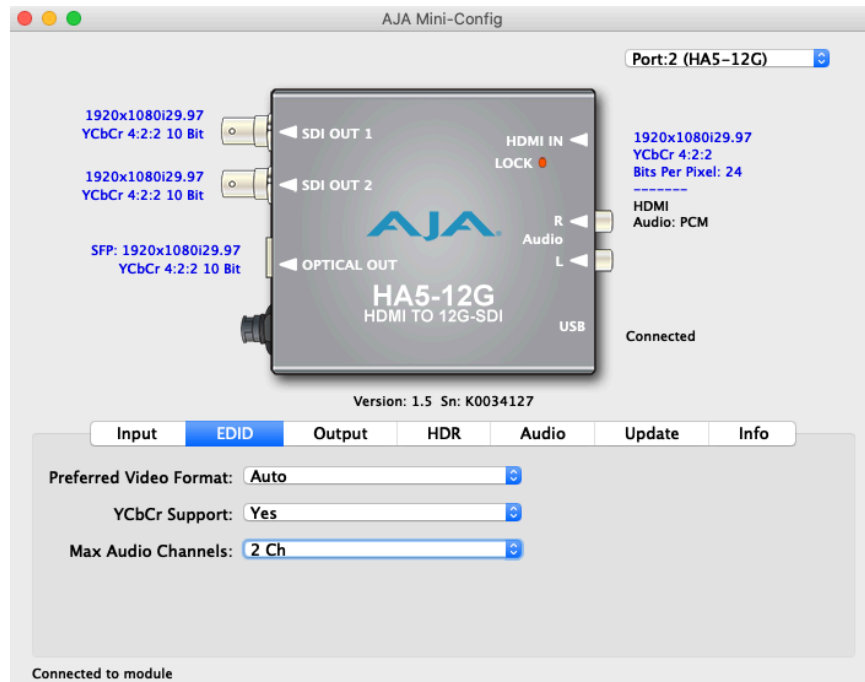
Selects the Input Video Color Range for RGB signals.

*NOTE: This setting has no effect on YCbCr signals.*

Choose from:

- Auto (default)
- SMPTE
- Full

## EDID Tab Screen



EDID (Extended Display Identification Data) is used to find the highest signal resolution that is compatible with both the source and the destination (sink) devices. When an HDMI source device is initially connected to the HA5-12G, the HA5-12G sends its EDID information to that source. The source uses this information to decide what format to send.

### Preferred Video Format

The HA5-12G's EDID setting can be configured by the user to any of the following formats and frame rates:

<ul style="list-style-type: none"><li>• Auto</li><li>• 1280x720p50</li><li>• 1280x720p60</li></ul>	<ul style="list-style-type: none"><li>• 1920x1080i25</li><li>• 1920x1080i30</li><li>• 1920x1080p50</li><li>• 1920x1080p60</li></ul>	<ul style="list-style-type: none"><li>• 2048x1080p50</li><li>• 2048x1080p60</li><li>• 3840x2160p50</li><li>• 3840x2160p60</li></ul>
--	---	---

### YCbCr Support

This parameter determines whether the HA5-12G will signal to its HDMI source that the HA5-12G will support (Yes) or will not support (No) YCbCr input formats.

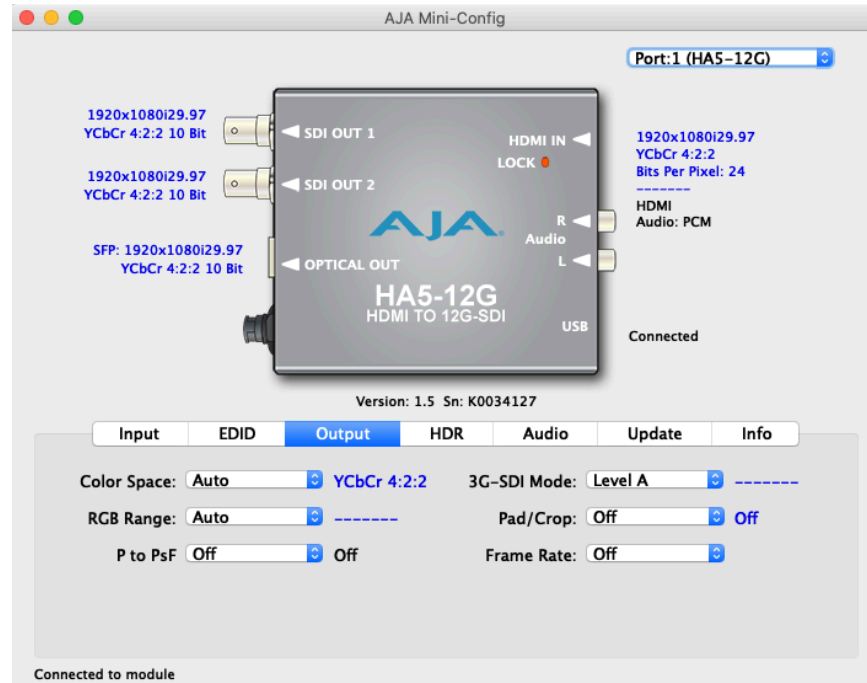
*NOTE: RGB formats are always supported by default in an HDMI sink.*

## Max Audio Channels

Selects the number of audio channels to be used from the signal source. Choose from:

- 2 Ch
- 8 Ch

## Output Tab Screen



**NOTE:** Optical Out Video formats are only displayed with HA5-12G-T models.

## Color Space

Selects the desired output video format. Choose from the following:

- Auto - (default) The HA5-12G automatically detects the input signal Color Space from the source device.
- 4:2:2 YCbCr
- 4:4:4 RGB
- 4:4:4 YCbCr (HFR 4K/UltraHD 4:4:4 limited to 8 bit)

## RGB Range

Selects the Color Range. Choose from the following:

- Auto - (default) The HA5-12G automatically detects the RGB range (if the input signal is RGB).
- SMPTE
- Full

## P to PsF

Choose to convert incoming progressive format HDMI video to PsF SDI video.

- Off - (default) No conversion.
- On - Converts the video to PsF (if it is progressive format and low frame rate).

## 3G-SDI Mode

---

Selects the 3G SDI Video Mode. Choose from the following:

- Level A - (default)
- Level B

## Pad/Crop

---

Selects pixel padding and cropping conversions between UltraHD and 4K formats. Choose from the following:

- Off - (default) No processing.
- Pad - Add black pixels to the left and right sides of the raster to fill a wider aspect ratio (UltraHD to 4K, or HD to 2K).
- Crop - Crop pixels from left and right sides of the raster to fit a narrower aspect ratio (4K to UltraHD, or 2K to HD).

## Frame Rate

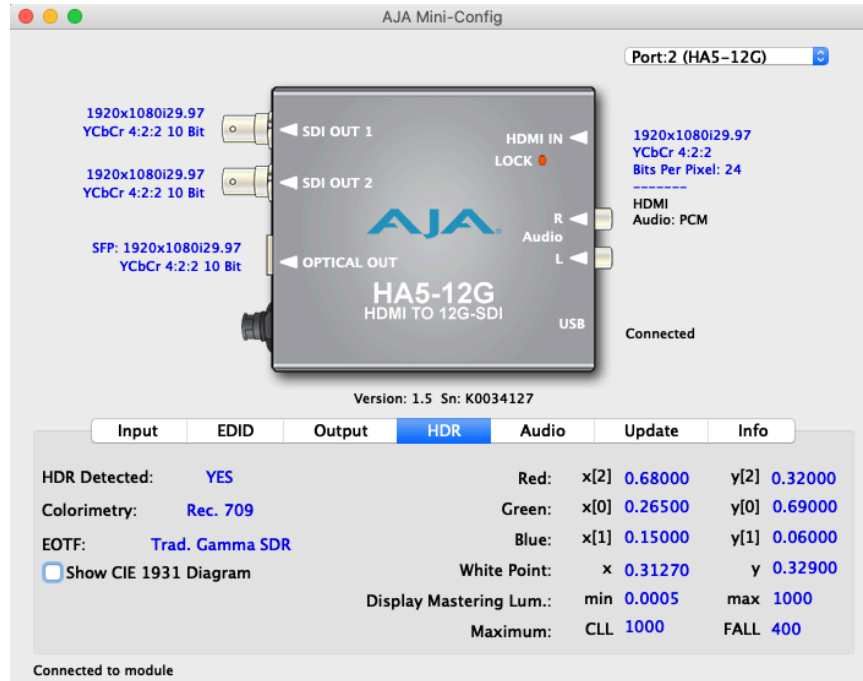
---

The Frame Rate control can be set to convert an integer input frame rate (like p60) to the matching fractional or non-integer output frame rate (like p59.94). The frame rate converter accomplishes this by dropping a complete video frame every 1001 frames. This control can also be set to convert a fractional or non-integer input frame rate (like p59.94) to an integer output frame rate (like p60), accomplished by repeating a complete video frame every 1000 frames.

*NOTE: Because audio is disembedded prior to any video processing and then re-embedded after video processing, there will be no disruption to audio when the frame rate converter is working.*

- Off (default) - No frame rate conversion will be performed. The output frame rate will match the input frame rate.
- Fractional - If the input frame rate is an integer frame rate, the output frame rate will be converted to the matching fractional frame rate. Fractional frame rate input signals are unaffected.
- Integer - If the input frame rate is a fractional frame rate, the output frame rate will be converted to the matching integer frame rate. Integer frame rate input signals are unaffected.

# HDR Tab Screen



Click on the HDR tab to view the received High Dynamic Range static metadata extensions settings.

The HDR tab indicates whether an HDR Infoframe is being received on the HDMI input. If so, it decodes and presents the static metadata descriptors as defined in CTA-861.3 and HDMI v2.0a.

**NOTE:** The HA5-12G HDR function does not modify the video data.

**NOTE:** Hover the cursor over each parameter field to view its corresponding CTA-861.3 description in a pop-up window.

## HDR Detected

This field reports YES or NO to indicate whether an HDR Infoframe is being received.

- YES - HDR metadata is being received.
- NO - HDR metadata is not being received.

## Colorimetry

This field reports the Colorimetry value that is being received from the AVI Infoframe. This information is always transmitted from an HDMI source, regardless of whether the HDR Infoframe is present.

Status values include the following:

- No Data
- Rec.601
- Rec.709
- BT.2020 Non-CL (non-constant luminance)
- BT.2020 CL (constant luminance)

## EOTF

---

This field reports the Electro-Optical Transfer Function (EOTF) value that is being received from the HDR Infoframe.

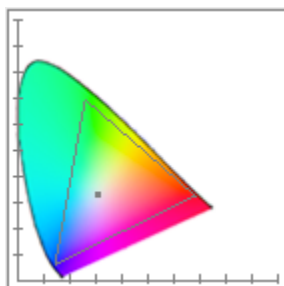
Status values include the following:

- Trad Gamma SDR
- Trad Gamma HDR
- ST 2084 (SMPTE ST 2084)
- Hybrid Log-Gamma
- Reserved [4], not yet defined
- Reserved [5], not yet defined
- Reserved [6], not yet defined
- Reserved [7], not yet defined

## Show CIE 1931 Diagram

---

When checked, displays a visual assist showing the color space triangle based on the x,y locations of the primaries on top of the CIE 1931 Chromaticity diagram.



## Display Mastering Luminance

---

Represents the minimum and maximum Display Mastering Luminance values received in the HDR Infoframe.

- Minimum: Defines the floor of the SMPTE ST 2086 color volume (in the case of HDR) and is determined by the mastering environment.
  - Range: 0.0000 cd/m<sup>2</sup> to 6.5535 cd/m<sup>2</sup>.
  - Step size: 0.0001 cd/m<sup>2</sup>.
- Maximum: Defines the ceiling of the SMPTE ST 2086 color volume (in the case of HDR) and is determined by the mastering environment.
  - Range: 0 cd/m<sup>2</sup> to 65535 cd/m<sup>2</sup>.
  - Step size: 1 cd/m<sup>2</sup>.

## Maximum Content Light Level (CLL)

---

Represents the highest-value pixel component in an entire scene. It is determined by analyzing each frame of video, and can be determined in the post environment.

- Range: 0 cd/m<sup>2</sup> to 65535 cd/m<sup>2</sup>.
- Step size: 1 cd/m<sup>2</sup>.

## Maximum Frame Average Light Level (FALL)

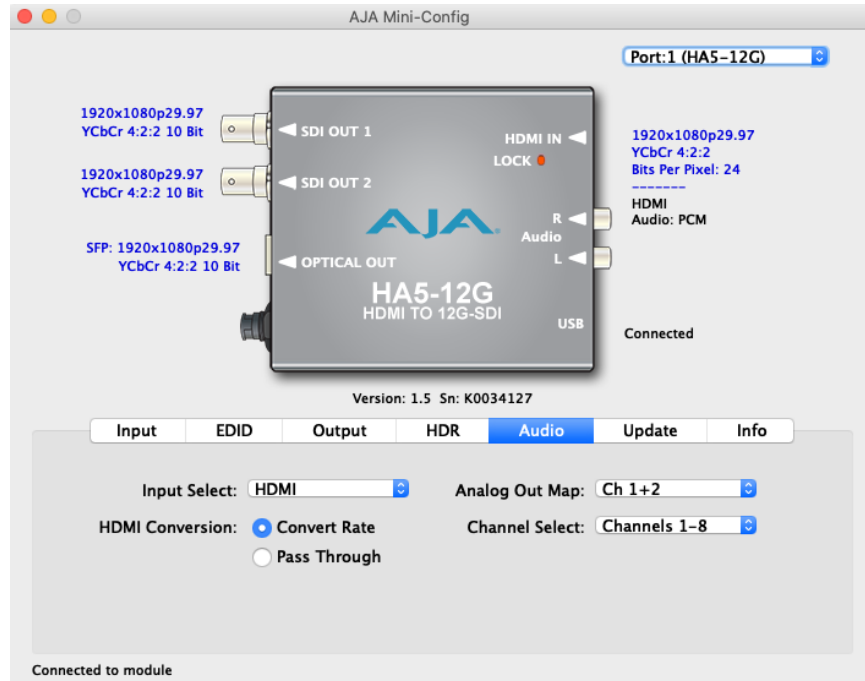
---

Represents the maximum of frame-based average light levels taken over an entire scene, and can be determined in the post environment.

- Range: 0 cd/m<sup>2</sup> to 65535 cd/m<sup>2</sup>.
- Step size: 1 cd/m<sup>2</sup>.



# Audio Tab Screen



## Input Select

Choose the audio input source. Select from the following:

- HDMI
- Analog
- Analog + HDMI
- None

## HDMI Conversion

Choose the audio conversion to be performed on the incoming HDMI audio.

- Convert Rate - HDMI audio will be sample rate converted, if necessary, to 24-bit/48 kHz audio.
- Pass Through - HDMI audio will be passed to the SDI embedded audio channels without sample rate conversion.

## Analog Out Map

Select which pair of audio channels will carry the analog audio output. Choose from the following:

- Ch 1+2 (9+10)
- Ch 3+4 (11+12)
- Ch 5+6 (13+14)
- Ch 7+8 (15+16)

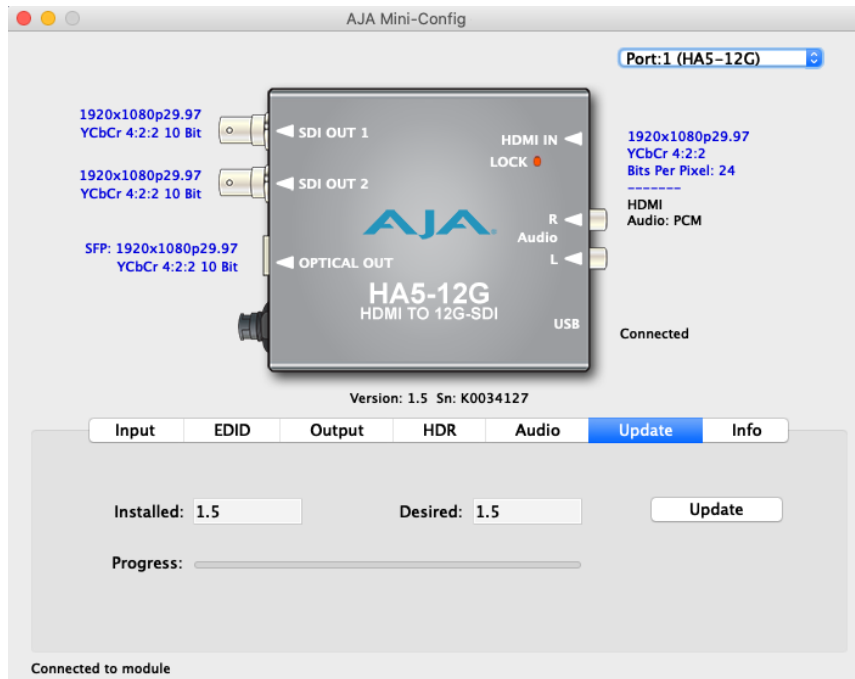
**NOTE:** The actual channel pair depends on the selection made for the Channel Select control. For example, if Ch 1+2 is selected, but the Channel Select is set to Channels 9-16, then the Analog Audio will be embedded into SDI Ch 9+10.

## Channel Select

Choose which set of SDI embedded audio output channels will receive up to eight channels of embedded audio received from the incoming signal. Choose from the following:

- Channels 1-8
- Channels 9-16

## Update Tab Screen



Use this Update screen to view the software version currently installed on the converter or install new firmware.

**NOTE:** When discussing Mini-Converters, “Firmware” is software that will be stored in the Mini-Converter’s non-volatile memory and used when it is powered up. This is something different than the AJA Mini-Config application software. The version numbers shown in the Update screen refer only to the firmware.

**Installed** - This field shows the version of the firmware currently installed inside the Mini-Converter.

**Desired** - This field shows the version of firmware embedded in the AJA Mini-Config application which you can install into the Mini-Converter by clicking the Update button.

### Update

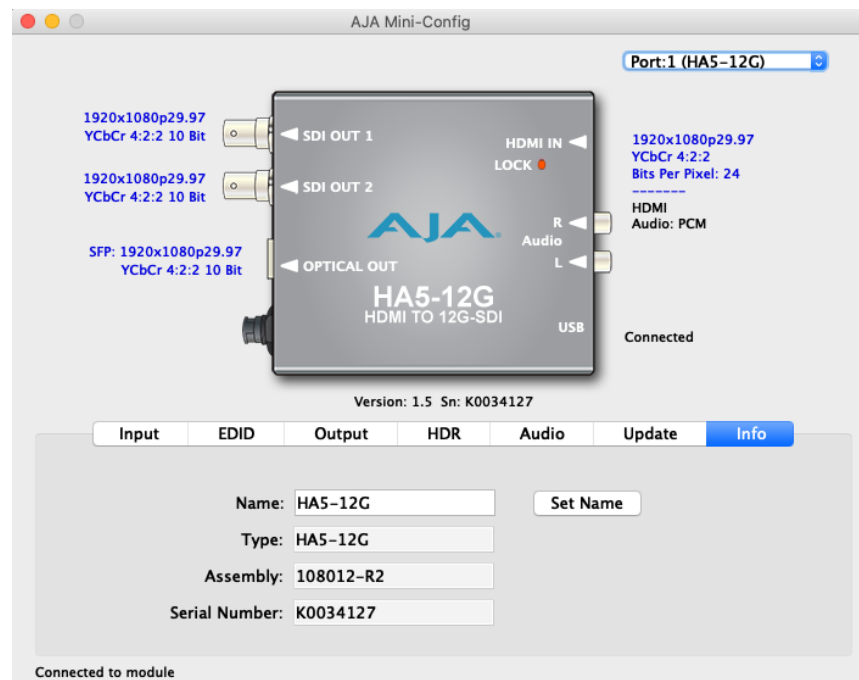
This button initiates a software update operation loading the “Desired” version of firmware into the Mini-Converter’s non-volatile memory.

**Progress** - This indicator bar shows the progress of firmware installation.

## Software Update Procedure

1. Check the AJA website for new AJA Mini-Config software for your Mini-Converter. If new software is found, download it and uncompress the file archive (zip). Here is the URL to use when checking:  
<http://www.aja.com/en/products/mini-converters/mini-config-software>
2. Connect the Mini-Converter to a Mac or PC via a USB port on the computer and run the new AJA Mini-Config software just downloaded.
3. Click on the Update tab screen.
4. Check the Installed version level against the Desired version level. If the Desired is newer, then click the Update button to download the new firmware to the Mini-Converter; progress will be shown via the "Progress" thermometer bar.

## Info Tab Screen



This screen provides basic information about the Mini-Converter. This information is useful when calling AJA Support for service or technical support.

**Name** - This field allows you to give your Mini-Converter a name. This can be useful if you have several Mini-Converters attached to a Mac/PC via USB so you can distinguish between them easily (especially if they're the same model).

**Type** - This is the factory set model name of the Mini-Converter.

**Assembly** - This is the factory assembly number.

**Serial Number** - This is the factory set unique serial number of your Mini-Converter. If you ever call AJA Support for service, you may be asked for this number.

# Appendix A – Specifications

---

## HA5-12G Family Tech Specs

---

### Video Input Formats

---

- (4K) 4096 x 2160p 23.98, 24, 25, 29.97, 30, 50, 59.94, 60
- (UltraHD) 3840 x 2160p 23.98, 24, 25, 29.97, 30, 50, 59.94, 60
- (2K) 2048 x 1080p 23.98, 24, 25, 29.97, 30, 50, 59.94, 60
- (HD) 1920 x 1080p 23.98, 24, 25, 29.97, 30, 50, 59.94, 60
- (HD) 1920 x 1080i 50, 59.94, 60
- (HD) 1280 x 720p 50, 59.94, 60
- (SD) 720 x 576p 50
- (SD) 720 x 576i 50
- (SD) 720 x 480p 59.94
- (SD) 720 x 480i 59.94
- RGB and YCbCr, 4:4:4/4:2:2, 8/10/12-bit

(Raster and Frame Rate Dependent, please see HA5-12G Video Formats in Documents and Manual)

### Video Input Digital

---

- 1x HDMI Type A connector, HDMI v2.0b

### Video Output Formats

---

- 1x 12 Gb SDI
  - (4K) 4096 x 2160p 23.98, 24, 25, 29.97, 30, 50, 59.94, 60
  - (4K) 4096 x 2160PsF 23.98, 24, 25, 29.97, 30
  - (UltraHD) 3840 x 2160p 23.98, 24, 25, 29.97, 30, 50, 59.94, 60
  - (Ultra HD) 3840 x 2160PsF 23.98, 24, 25, 29.97, 30
- 1x 6 Gb SDI
  - (4K) 4096 x 2160p 23.98, 24, 25, 29.97, 30
  - (4K) 4096 x 2160PsF 23.98, 24, 25, 29.97, 30
  - (UltraHD) 3840 x 2160p 23.98, 24, 25, 29.97, 30
  - (Ultra HD) 3840 x 2160PsF 23.98, 24, 25, 29.97, 30
- 1x 3 Gb SDI (Level A or B-Dual Link)
  - (2K) 2048 x 1080p 23.98, 24, 25, 29.97, 30, 50, 59.94, 60
  - (2K) 2048 x 1080PsF 23.98, 24, 25, 29.97, 30
  - (HD) 1920 x 1080p 23.98, 24, 25, 29.97, 30, 50, 59.94, 60
  - (HD) 1920 x 1080PsF 23.98, 24, 25, 29.97, 30
  - (HD) 1920 x 1080i 50, 59.94, 60
  - (HD) 1280 x 720p\* 50, 59.94, 60
- 1x 1.5 Gb SDI
  - (2K) 2048 x 1080p 23.98, 24, 25, 29.97, 30
  - (2K) 2048 x 1080PsF 23.98, 24, 25, 29.97, 30
  - (HD) 1920 x 1080p 23.98, 24, 25, 29.97, 30
  - (HD) 1920 x 1080PsF 23.98, 24, 25, 29.97, 30
  - (HD) 1920 x 1080i 50, 59.94, 60
  - (HD) 1280 x 720p 50, 59.94, 60

- 1x 270 Mb SDI
  - (SD) 625i 50
  - (SD) 525i 59.94
- RGB and YCbCr, 4:4:4/4:2:2/, 8/10/12-bit

(Raster and Frame Rate Dependent, please see HA5-12G Video Formats in Documents and Manual)

\*1280 x 720p is Level A Only

#### Video Output Digital

---

- 1x 12G-SDI BNC, SMPTE 259/292/424/2081/2082
- Single Link SD/HD/2K/UltraHD/4K

#### Video Output Digital - Additional for HA5-12G-T Only

---

- 1x 12G-SDI Fiber LC connector, SMPTE 297/259/292/424/2081/2082
- Nominal Wavelength: Tx 1260 nm (min), 1310 nm (typ), 1360 nm (max)
- Optical Power: -5 dBm (min), 0.5 dBm (max)
- Extinction Ratio: 5.4 dB (min)

#### Video Output Digital - Additional for HA5-12G-T-ST Only

---

- 1x 12G-SDI Fiber ST connector, SMPTE 297/259/292/424/2081/2082
- Nominal Wavelength: Tx 1260 nm (min), 1360 nm (typ), 1360 nm (max)
- Optical Power: -5 dBm (min), 2 dBm (max)
- Extinction Ratio: 3.4 dB (min)

#### Cable Equalization

---

(Belden 1694A coax)

- 12 Gbps, 65m
- 6 Gbps, 125m
- 3 Gbps, 190m
- 1.5 Gbps, 200m
- 270 Mbps, 405m

#### Audio Input Digital

---

- HDMI embedded audio, 24-bit, 8-channel

#### Audio Input Analog

---

- 2x RCA style connector, 2-channel -10dBu (nominal)

#### Audio Output Digital

---

- SDI embedded audio, 24-bit, 8-channel

#### User Interface

---

- USB port used with supplied cable and Mini-Config software application to configure and view device status via Mac or Windows

#### Size (w x d x h)

---

- 4.6" x 4.02" x 0.9" (116.84 x 102.11 x 22.86 mm)

#### Weight

---

- 0.5 lb (0.3 kg)

## Power

- 5-16VDC regulated, 11 watts, power supply required included with purchase
- AC Adapter: 100-240VAC, 50/60 Hz, universal input

## Environment

- Safe Operating Temperature: 0 to 40 C (32 to 104 F)
- Safe Storage Temperature (Power OFF): -40 to 60 C (-40 to 140 F)
- Operating Relative Humidity: 10-90% noncondensing
- Operating Altitude: <3,000 meters (<10,000 feet)

\*HA5-12G, HA5-12G-T and HA5-12G-T-ST each use approximately 12 watts of power and convection cooling. It will be warm to the touch, which is normal. When installing the unit, mount in a location where it has access to air for proper cooling. Do not stack the HA5-12G converters with other Mini-Converters.



### HA5-12G Video Input Formats

#### 4K/UltraHD Inputs Supported

##### 1x HDMI 2.0b:

<i>Format</i>	<i>Field Rate</i>	<i>Colorspace</i>	<i>Sampling</i>	<i>Bit Depth</i>
• 3840x2160p	23.98, 24, 25, 29.97, 30, 50, 59.94, 60	YCbCr	4:2:2	8, 10, 12
• 3840x2160p	23.98, 24, 25, 29.97, 30, 50, 59.94, 60	YCbCr	4:2:0	8, 10, 12
• 3840x2160p	23.98, 24, 25, 29.97, 30	YCbCr/RGB	4:4:4	8, 10, 12
• 3840x2160p	50, 59.94, 60	YCbCr/RGB	4:4:4	8
• 4096x2160p	23.98, 24, 25, 29.97, 30, 50, 59.94, 60	YCbCr	4:2:2	8, 10, 12
• 4096x2160p	23.98, 24, 25, 29.97, 30, 50, 59.94, 60	YCbCr	4:2:0	8, 10, 12
• 4096x2160p	23.98, 24, 25, 29.97, 30	YCbCr/RGB	4:4:4	8, 10, 12
• 4096x2160p	50, 59.94, 60	YCbCr/RGB	4:4:4	8

#### 2K/HD Inputs Supported

##### 1x HDMI 2.0b:

<i>Format</i>	<i>Field Rate</i>	<i>Colorspace</i>	<i>Sampling</i>	<i>Bit Depth</i>
• 1280x720p	50, 59.94, 60	YCbCr	4:2:2	8, 10, 12
• 1280x720p	50, 59.94, 60	YCbCr/RGB	4:4:4	8, 10, 12
• 1920x1080i	50, 59.94, 60	YCbCr	4:2:2	8, 10, 12
• 1920x1080i	50, 59.94, 60	YCbCr/RGB	4:4:4	8, 10, 12
• 1920x1080p	23.98, 24, 25, 29.97, 30, 50, 59.94, 60	YCbCr	4:2:2	8, 10, 12
• 1920x1080p	23.98, 24, 25, 29.97, 30, 50, 59.94, 60	YCbCr/RGB	4:4:4	8, 10, 12
• 2048x1080p	23.98, 24, 25, 29.97, 30, 50, 59.94, 60	YCbCr	4:2:2	8, 10, 12
• 2048x1080p	23.98, 24, 25, 29.97, 30, 50, 59.94, 60	YCbCr/RGB	4:4:4	8, 10, 12

#### SD Inputs Supported

##### 1x HDMI 2.0b:

<i>Format</i>	<i>Field Rate</i>	<i>Colorspace</i>	<i>Sampling</i>	<i>Bit Depth</i>
• 480i	59.94	YCbCr	4:2:2	8, 10, 12
• 480i	59.94	YCbCr/RGB	4:4:4	8, 10, 12
• 480p	59.94	YCbCr	4:2:2	8, 10, 12
• 480p	59.94	YCbCr/RGB	4:4:4	8, 10, 12
• 576i	50	YCbCr	4:2:2	8, 10, 12
• 576i	50	YCbCr/RGB	4:4:4	8, 10, 12
• 576p	50	YCbCr	4:2:2	8, 10, 12
• 576p	50	YCbCr/RGB	4:4:4	8, 10, 12

## HA5-12G Video Output Formats

### 4K/UltraHD Outputs Supported

#### 1x 12Gb SDI:

<i>Format</i>	<i>Field Rate</i>	<i>Level A/B</i>	<i>Colorspace</i>	<i>Sampling</i>	<i>Bit Depth</i>
• 3840x2160p	23.98, 24, 25, 29.97, 30	A or B-DL	YCbCr/RGB	4:4:4	10
• 3840x2160p	50, 59.94, 60	A or B-DL	YCbCr	4:2:2	10
• 4096x2160p	23.98, 24, 25, 29.97, 30	A or B-DL	YCbCr/RGB	4:4:4	10
• 4096x2160p	50, 59.94, 60	A or B-DL	YCbCr	4:2:2	10

#### 1x 6Gb SDI:

<i>Format</i>	<i>Field Rate</i>	<i>Level A/B</i>	<i>Colorspace</i>	<i>Sampling</i>	<i>Bit Depth</i>
• 3840x2160p	23.98, 24, 25, 29.97, 30	B-DS	YCbCr	4:2:2	10
• 4096x2160p	23.98, 24, 25, 29.97, 30	B-DS	YCbCr	4:2:2	10

### 2K/HD Outputs Supported

#### 1x 3Gb SDI:

<i>Format</i>	<i>Field Rate</i>	<i>Level A/B</i>	<i>Colorspace</i>	<i>Sampling</i>	<i>Bit Depth</i>
• 1280x720p	50, 59.94, 60	A	YCbCr/RGB	4:4:4	10
• 1920x1080i	50, 59.94, 60	A or B-DL	YCbCr/RGB	4:4:4	10
• 1920x1080p	23.98, 24, 25, 29.97, 30	A or B-DL	YCbCr/RGB	4:4:4	10
• 1920x1080psf	23.98, 24, 25, 29.97, 30	A	YCbCr/RGB	4:4:4	10
• 1920x1080p	50, 59.94, 60	A or B-DL	YCbCr	4:2:2	10
• 2048x1080p	23.98, 24, 25, 29.97, 30	A or B-DL	YCbCr/RGB	4:4:4	10
• 2048x1080psf	23.98, 24, 25, 29.97, 30	A	YCbCr/RGB	4:4:4	10
• 2048x1080p	50, 59.94, 60	A or B-DL	YCbCr	4:2:2	10

#### 1x 1.5Gb SDI:

<i>Format</i>	<i>Field Rate</i>	<i>Colorspace</i>	<i>Sampling</i>	<i>Bit Depth</i>
• 1280x720p	50, 59.94, 60	YCbCr	4:2:2	10
• 1920x1080i	50, 59.94, 60	YCbCr	4:2:2	10
• 1920x1080p	23.98, 24, 25, 29.97, 30	YCbCr	4:2:2	10
• 1920x1080psf	23.98, 24, 25, 29.97, 30	YCbCr	4:2:2	10
• 2048x1080p	23.98, 24, 25, 29.97, 30	YCbCr	4:2:2	10
• 2048x1080psf	23.98, 24, 25, 29.97, 30	YCbCr	4:2:2	10

### SD Outputs Supported

#### 1x 270Mb SDI:

<i>Format</i>	<i>Field Rate</i>	<i>Colorspace</i>	<i>Sampling</i>	<i>Bit Depth</i>
• 525i	59.94	YCbCr	4:2:2	10
• 625i	50	YCbCr	4:2:2	10

# Appendix B – Safety and Compliance

---

## Federal Communications Commission (FCC) Compliance Notices

---

### Class A Interference Statement

---

This equipment has been tested and found to comply with the limits for a Class A digital device, pursuant to Part 15, Subpart B of the FCC Rules. These limits are designed to provide reasonable protection against harmful interference in a residential installation. This equipment generates, uses, and can radiate radio frequency energy and, if not installed and used in accordance with the instructions, may cause harmful interference to radio communications. However, there is no guarantee that interference will not occur in a particular installation. If this equipment does cause harmful interference to radio or television reception, which can be determined by turning the equipment off and on, the user is encouraged to try to correct the interference by one or more of the following measures:

- Reorient or relocate the receiving antenna.
- Increase the separation between the equipment and receiver.
- Connect the equipment into an outlet on a circuit different from that to which the receiver is connected.
- Consult the dealer or an experienced radio/TV technician for help.

### FCC Caution

---

This device complies with Part 15 of the FCC Rules. Operation is subject to the following two conditions: (1) This device may not cause harmful interference, and (2) this device must accept any interference received, including interference that may cause undesired operation.

## Canadian ICES Statement

---

### Canadian Department of Communications Radio Interference Regulations

This digital apparatus does not exceed the Class A limits for radio-noise emissions from a digital apparatus as set out in the Radio Interference Regulations of the Canadian Department of Communications. This Class A digital apparatus complies with Canadian ICES-003.

### Règlement sur le brouillage radioélectrique du ministère des Communications

Cet appareil numérique respecte les limites de bruits radioélectriques visant les appareils numériques de classe A prescrites dans le Règlement sur le brouillage radioélectrique du ministère des Communications du Canada. Cet appareil numérique de la Classe A est conforme à la norme NMB-003 du Canada.

## European Union and European Free Trade Association (EFTA) Regulatory Compliance

---

This equipment may be operated in the countries that comprise the member countries of the European Union and the European Free Trade Association. These countries, listed in the following paragraph, are referred to as The European Community throughout this document:

AUSTRIA, BELGIUM, BULGARIA, CYPRUS, CZECH REPUBLIC, DENMARK, ESTONIA, FINLAND, FRANCE, GERMANY, GREECE, HUNGARY, IRELAND, ITALY, LATVIA, LITHUANIA, LUXEMBOURG, MALTA, NETHERLANDS, POLAND, PORTUGAL, ROMANIA, SLOVAKIA, SLOVENIA, SPAIN, SWEDEN, UNITED KINGDOM, ICELAND, LICHTEINSTEIN, NORWAY, SWITZERLAND



## Declaration of Conformity

Marking by this symbol indicates compliance with the Essential Requirements of the EMC Directive of the European Union 2014/30/EU.



This equipment meets the following conformance standards:

### Safety

EN 62368-1: 2014 + A11 (T-Mark License),  
IEC 62368-1: 2014 (CB Scheme Certificate)

Additional licenses issued for specific countries available on request.

### Emissions

EN 55032: 2015 +AC: 2020, CISPR 32: 2015,  
EN 61000-3-2: 2014, EN 61000-3-3: 2013

### Immunity

EN 55103-2: 2009  
EN 61000-4-2: 2009, EN 61000-4-3: 2006 + A1:2008 + A2:2010,  
EN 61000-4-4: 2012, EN 61000-4-5: 2014 + A1: 2017, EN 61000-4-6: 2013,  
EN 61000-4-11: 2020

Environments: E2, E3 and E4

### Laser

EN 60825-1: 2014 and EN 60825-2: 2004 + A1 + A2,  
CDRH Compliant Class 1 (TUV Cert No. R 50408760)

Also Licensed for Standards: FDA 21 CFR 1040.10 and 1040.11

The product is also licensed for additional country specific standards as required for the International Marketplace



**Warning!** This is a Class A product. In a domestic environment, this product may cause radio interference, in which case, the user may be required to take appropriate measures.

**Achtung!** Dieses ist ein Gerät der Funkstörgrenzwertklasse A. In Wohnbereichen können bei Betrieb dieses Gerätes Rundfunkstörungen auftreten, in welchen Fällen der Benutzer für entsprechende Gegenmaßnahmen verantwortlich ist.

**Attention!** Ceci est un produit de Classe A. Dans un environnement domestique, ce produit risque de créer des interférences radioélectriques, il appartiendra alors à l'utilisateur de prendre les mesures spécifiques appropriées..

## Recycling Notice



This symbol on the product or its packaging indicates that this product must not be disposed of with your other household waste. Instead, it is your responsibility to dispose of your waste equipment by handing it over to a designated collection point for the recycling of waste electrical and electronic equipment. The separate collection and recycling of your waste equipment at the time of disposal will help conserve natural resources and ensure that it is recycled in a manner that protects human health and the environment. For more information about where you can drop off your waste for recycling, please contact your local authority, or where you purchased your product.

## Korea KCC Compliance Statement

사 용 자 안 내 문
이 기기는 업무용 환경에서 사용할 목적으로 적합성평가를 받은 기기로서 가정용 환경에서 사용하는 경우 전파간섭의 우려가 있습니다.

## Taiwan Compliance Statement

警告使用者：  
這是甲類的資訊產品，在居住的環境中使用時，可能會造成射頻干擾，在這種情況下，使用者會被要求採取某些適當的對策。

This is a Class A product based on the standard of the Bureau of Standards, Metrology and Inspection (BSMI) CNS 13438, Class A. In a domestic environment this product may cause radio interference in which case the user may be required to take adequate measures.

## Japanese Compliance Statement

この装置は、クラスA情報技術装置です。この装置を家庭環境で使用すると電波妨害を引き起こすことがあります。この場合には使用者が適切な対策を講ずるよう要求されることがあります。 VCCI-A

This is a Class A product based on the standard of the VCCI Council (VCCI-32: 2016). If this equipment is used in a domestic environment, radio interference may occur, in which case, the user may be required to take corrective actions.

## Translated Warning and Caution Messages

The following caution statements, warning conventions, and warning messages apply to this product and manual.



Warning Symbol



Caution Symbol

## Before Operation Please Read These Instructions



**Warning!** Read and follow all warning notices and instructions marked on the product or included in the documentation.

**Avertissement!** Lisez et conformez-vous à tous les avis et instructions d'avertissement indiqués sur le produit ou dans la documentation.

**Warnung!** Lesen und befolgen Sie die Warnhinweise und Anweisungen, die auf dem Produkt angebracht oder in der Dokumentation enthalten sind.

**¡Advertencia!** Lea y siga todas las instrucciones y advertencias marcadas en el producto o incluidas en la documentación.

**Aviso!** Leia e siga todos os avisos e instruções assinalados no produto ou incluídos na documentação.

**Avviso!** Leggere e seguire tutti gli avvisi e le istruzioni presenti sul prodotto o inclusi nella documentazione.



**Warning!** Do not use this device near water and clean only with a dry cloth.

**Avertissement!** N'utilisez pas cet appareil près de l'eau et nettoyez-le seulement avec un tissu sec.

**Warnung!** Das Gerät nicht in der Nähe von Wasser verwenden und nur mit einem trockenen Tuch säubern.

**¡Advertencia!** No utilice este dispositivo cerca del agua y límpielo solamente con un paño seco.

**Aviso!** Não utilize este dispositivo perto da água e limpe-o somente com um pano seco.

**Avviso!** Non utilizzare questo dispositivo vicino all'acqua e pulirlo soltanto con un panno asciutto.



**Warning!** Do not block any ventilation openings. Install in accordance with the manufacturer's instructions.

**Avertissement!** Ne bloquez aucune ouverture de ventilation. Suivez les instructions du fabricant lors de l'installation.

**Warnung!** Die Lüftungsöffnungen dürfen nicht blockiert werden. Nur gemäß den Anweisungen des Herstellers installieren.

**¡Advertencia!** No bloquee ninguna de las aberturas de la ventilación. Instale de acuerdo con las instrucciones del fabricante.

**Aviso!** Não obstrua nenhuma das aberturas de ventilação. Instale de acordo com as instruções do fabricante.

**Avviso!** Non ostruire le aperture di ventilazione. Installare in conformità con le istruzioni del fornitore.



**Warning!** Do not install near any heat sources such as radiators, heat registers, stoves, or other apparatus (including amplifiers) that produce heat.

**Avertissement!** N'installez pas l'appareil près d'une source de chaleur telle que des radiateurs, des bouches d'air de chauffage, des fourneaux ou d'autres appareils (amplificateurs compris) qui produisent de la chaleur.

**Warnung!** Nicht in der Nähe von Wärmequellen wie Heizkörpern, Heizregistern, Öfen oder anderen Wärme erzeugenden Geräten (einschließlich Verstärkern) aufstellen.

**¡Advertencia!** No instale cerca de fuentes de calor tales como radiadores, registros de calor, estufas u otros aparatos (incluidos amplificadores) que generan calor.

**Aviso!** Não instale perto de nenhuma fonte de calor tal como radiadores, saídas de calor, fogões ou outros aparelhos (incluindo amplificadores) que produzam calor.

**Avviso!** Non installare vicino a fonti di calore come termosifoni, diffusori di aria calda, stufe o altri apparecchi (amplificatori compresi) che emettono calore



**Warning!** Do not defeat the safety purpose of the polarized or grounding-type plug. A polarized plug has two blades with one wider than the other. A grounding type plug has two blades and a third grounding prong. The wide blade or the third prong are provided for your safety. If the provided plug does not fit into your outlet, consult an electrician for replacement of the obsolete outlet.

**Avertissement!** La sécurité de la prise polarisée ou de la prise de type mise à la terre ne doit en aucun cas être empêchée de fonctionner. Une prise polarisée a deux broches, l'une étant plus large que l'autre. Une prise de type mise à la terre a deux broches et une troisième broche pour la mise à la terre. La broche large ou la troisième broche sont fournies pour votre sécurité. Si la prise fournie ne s'insère pas dans votre prise femelle, consultez un électricien pour le remplacement de la prise femelle obsolète.

**Warnung!** Der Sicherheitszweck des gepolten bzw. Schukosteckers ist zu berücksichtigen. Ein gepolter Stecker verfügt über zwei Pole, von denen einer breiter als der andere ist. Ein Schukostecker verfügt neben den zwei Polen noch über einen dritten Pol zur Erdung. Der breite Pol bzw. der Erdungspol dienen der Sicherheit. Wenn der zur Verfügung gestellte Stecker nicht in Ihren Anschluss passt, konsultieren Sie einen Elektriker, um den veralteten Anschluss zu ersetzen.

**¡Advertencia!** No eche por tierra la finalidad del tipo de enchufe polarizado con conexión a tierra. Un enchufe polarizado tiene dos espigas, una más ancha que la otra. Un enchufe con conexión a tierra tiene dos espigas iguales y una tercera espiga que sirve para la conexión a tierra. La espiga ancha, o la tercera espiga, sirven para su seguridad. Si el enchufe suministrado no encaja en el tomacorriente, consulte con un electricista para reemplazar el tomacorriente obsoleto.

**Aviso!** Não anule a finalidade da segurança da ficha polarizada ou do tipo ligação terra. Uma ficha polarizada tem duas lâminas sendo uma mais larga do que a outra. Uma ficha do tipo de ligação à terra tem duas lâminas e um terceiro terminal de ligação à terra. A lâmina larga ou o terceiro terminal são fornecidos para sua segurança. Se a ficha fornecida não couber na sua tomada, consulte um electricista para a substituição da tomada obsoleta.

**Avviso!** Non compromettere la sicurezza della spina polarizzata o con messa a terra. Una spina polarizzata ha due spinotti, di cui uno più largo. Una spina con messa a terra ha due spinotti e un terzo polo per la messa a terra. Lo spinotto largo o il terzo polo sono forniti per motivi di sicurezza. Se la spina fornita non si inserisce nella presa di corrente, contattare un elettricista per la sostituzione della presa obsoleta.



**Warning!** Since the Mains plug is used as the disconnection for the device, it must remain readily accessible and operable.

**Avertissement!** Puisque la prise principale est utilisée pour débrancher l'appareil, elle doit rester aisément accessible et fonctionnelle.

**Warnung!** Da der Netzstecker als Trennvorrichtung dient, muss er stets zugänglich und funktionsfähig sein.

**¡Advertencia!** Puesto que el enchufe de la red eléctrica se utiliza como dispositivo de desconexión, debe seguir siendo fácilmente accesible y operable.

**Aviso!** Dado que a ficha principal é utilizada como a desconexão para o dispositivo, esta deve manter-se prontamente acessível e funcional.

**Avviso!** Poiché il cavo di alimentazione viene usato come dispositivo di sconnessione, deve rimanere prontamente accessibile e operabile.



**Warning!** Protect the power cord from being walked on or pinched particularly at plugs, convenience receptacles, and the point where they exit from the device.

**Avertissement!** Protégez le cordon d'alimentation pour que l'on ne marche pas dessus ou qu'on le pince, en particulier au niveau des prises mâles, des réceptacles de convenance, et à l'endroit où il sort de l'appareil.

**Warnung!** Vermeiden Sie, dass auf das Netzkabel getreten oder das Kabel geknickt wird, insbesondere an den Steckern, den Steckdosen und am Kabelausgang am Gerät.

**¡Advertencia!** Proteja el cable de energía para que no se le pise ni apriete, en especial cerca del enchufe, los receptáculos de conveniencia y el punto del que salen del equipo.

**Aviso!** Proteja o cabo de alimentação de ser pisado ou de ser comprimido particularmente nas fichas, em tomadas de parede de conveniência e no ponto de onde sai do dispositivo.

**Avviso!** Proteggere il cavo di alimentazione in modo che nessuno ci cammini sopra e che non venga schiacciato soprattutto in corrispondenza delle spine e del punto in cui esce dal dispositivo.



**Warning!** Unplug this device during lightning storms or when unused for long periods of time.

**Avertissement!** Débranchez cet appareil pendant les orages avec éclairs ou s'il est inutilisé pendant de longues périodes.

**Warnung!** Das Gerät ist bei Gewitterstürmen oder wenn es über lange Zeiträume ungenutzt bleibt vom Netz zu trennen.

**¡Advertencia!** Desenchufe este dispositivo durante tormentas eléctricas o cuando no se lo utilice por largos periodos del tiempo.

**Aviso!** Desconecte este dispositivo da tomada durante trovoadas ou quando não é utilizado durante longos períodos de tempo.

**Avviso!** Utilizzare soltanto i collegamenti e gli accessori specificati e/o venduti dal produttore, quali il treppiedi e l'esoscheletro.



**Warning!** Do not open the chassis. There are no user-serviceable parts inside. Opening the chassis will void the warranty unless performed by an AJA service center or licensed facility.

**Avertissement!** Ne pas ouvrir le châssis. Aucun élément à l'intérieur du châssis ne peut être réparé par l'utilisateur. La garantie sera annulée si le châssis est ouvert par toute autre personne qu'un technicien d'un centre de service ou d'un établissement agréé AJA.

**Warnung!** Öffnen Sie das Gehäuse nicht. Keine der Geräteteile können vom Benutzer gewartet werden. Durch das Öffnen des Gehäuses wird die Garantie hinfällig, es sei denn, solche Wartungsarbeiten werden in einem AJA-Service-Center oder einem lizenzierten Betrieb vorgenommen.

**¡Advertencia!** No abra el chasis. El interior no contiene piezas reparables por el usuario. El abrir el chasis anulará la garantía a menos que se lo haga en un centro de servicio AJA o en un local autorizado.

**Advertência!** Não abra o chassi. Não há internamente nenhuma peça que permita manutenção pelo usuário. Abrir o chassi anula a garantia, a menos que a abertura seja realizada por uma central de serviços da AJA ou por um local autorizado.

**Avvertenza!** Non aprire lo chassis. All'interno non ci sono parti riparabili dall'utente. L'apertura dello chassis invaliderà la garanzia se non viene effettuata da un centro ufficiale o autorizzato AJA.



**Warning!** Disconnect the external AC power supply line cord(s) from the mains power before moving the unit.

**Avertissement!** Retirez le ou les cordons d'alimentation en CA de la source d'alimentation principale lorsque vous déplacez l'appareil.

**Warnung!** Trennen Sie die Wechselstrom-Versorgungskabel vom Netzstrom, bevor Sie das Gerät verschieben.

**¡Advertencia!** Cuando mueva la unidad desenchufe de la red eléctrica el/los cable(s) de la fuente de alimentación CA tipo brick.

**Advertência!** Remova os cabos CA de alimentação brick da rede elétrica ao mover a unidade.

**Avvertenza!** Scollegare il cavo dell'alimentatore quando si sposta l'unità.



**Warning!** Refer all servicing to qualified service personnel. Servicing is required when the device has been damaged in any way, such as power-supply cord or plug is damaged, liquid has been spilled or objects have fallen into the device, the device has been exposed to rain or moisture, does not operate normally, or has been dropped.

**Avertissement!** Référez-vous au personnel de service qualifié pour tout entretien. L'entretien est exigé quand l'appareil a été endommagé de quelque manière que ce soit, par exemple lorsque le cordon d'alimentation ou la prise sont endommagés, que du liquide a été versé ou des objets sont tombés dans l'appareil, que l'appareil a été exposé à la pluie ou à l'humidité, ne fonctionne pas normalement ou est tombé.

**Warnung!** Das Gerät sollte nur von qualifizierten Fachkräften gewartet werden. Eine Wartung ist fällig, wenn das Gerät in irgendeiner Weise beschädigt wurde, wie bei beschädigtem Netzkabel oder Netzstecker, falls Flüssigkeiten oder Objekte in das Gerät gelangen, das Gerät Regen oder Feuchtigkeit ausgesetzt wurde, nicht ordnungsgemäß funktioniert oder fallen gelassen wurde.

**¡Advertencia!** Consulte al personal calificado por cuestiones de reparación. El servicio de reparación se requiere cuando el dispositivo ha recibido cualquier tipo de daño, por ejemplo cable o espigas dañadas, se ha derramado líquido o se han caído objetos dentro del dispositivo, el dispositivo ha sido expuesto a la lluvia o humedad, o no funciona de modo normal, o se ha caído.

**Aviso!** Remeta todos os serviços de manutenção para o pessoal de assistência qualificado. A prestação de serviços de manutenção é exigida quando o dispositivo foi danificado mediante qualquer forma, como um cabo de alimentação ou ficha que se encontra danificado/a, quando foi derramado líquido ou caíram objectos sobre o dispositivo, quando o dispositivo foi exposto à chuva ou à humidade, quando não funciona normalmente ou quando foi deixado cair.

**Avviso!** Fare riferimento al personale qualificato per tutti gli interventi di assistenza. L'assistenza è necessaria quando il dispositivo è stato danneggiato in qualche modo, ad esempio se il cavo di alimentazione o la spina sono danneggiati, è stato rovesciato del liquido è stato rovesciato o qualche oggetto è caduto nel dispositivo, il dispositivo è stato esposto a pioggia o umidità, non funziona correttamente o è caduto



**Warning!** Only use attachments and accessories specified and/or sold by the manufacturer.

**Avertissement!** Utilisez seulement les attaches et accessoires spécifiés et/ou vendus par le fabricant.

**Warnung!** Verwenden Sie nur Zusatzgeräte und Zubehör angegeben und / oder verkauft wurde durch den Hersteller.

**¡Advertencia!** Utilice solamente los accesorios y conexiones especificados y/o vendidos por el fabricante.

**Aviso!** Utilize apenas equipamentos/acessórios especificados e/ou vendidos pelo fabricante.

**Avviso!** Utilizzare soltanto i collegamenti e gli accessori specificati e/o venduti dal produttore.



**Warning!** Active fiber-optic cables emit radiation invisible to the human eye. Do not look directly at the end of an active fiber-optic cable or the fiber connector on a HA5-12G, HA5-12G-T or HA5-12G-T-ST; these are a Class 1 Laser Product.

**Advertência!** Cabos de fibra ótica ativos emitem radiação invisível ao olho humano. Não olhe diretamente para a extremidade de um cabo de fibra ótica ativo; o HA5-12G, HA5-12G-T or HA5-12G-T-ST é um produto laser de classe 1.

**Avertissement!** Lorsqu'ils sont actifs, les câbles en fibre optique émettent des radiations que l'oeil humain ne peut voir. Ne regardez pas directement l'extrémité d'un câble en fibre optique en cours d'utilisation ; les équipements HA5-12G, HA5-12G-T or HA5-12G-T-ST sont des produits laser de classe 1.

**Avvertenza** I cavi a fibre ottiche attivi (ossia in cui si propagano segnali) emettono radiazioni invisibili. Non fissare lo sguardo direttamente sull'estremità di un cavo a fibre ottiche attivo; il cavo HA5-12G, HA5-12G-T or HA5-12G-T-ST è un prodotto laser di Classe 1.

**¡Advertencia!** Active los cables de fibra óptica de emitir radiación invisible para el ojo humano. No mire directamente en el extremo de un cable de fibra óptica activa; el HA5-12G, HA5-12G-T or HA5-12G-T-ST es un producto láser de Clase 1.

**Achtung!** Aktive Faseroptik-Kabel geben eine Strahlung ab, die für das menschliche Auge unsichtbar ist. Das Ende eines aktiven Faseroptik-Kabels niemals direkt ansehen; die HA5-12G, HA5-12G-T or HA5-12G-T-ST ist ein Laser-Produkt der Klasse 1.



**Caution!** HA5-12G, HA5-12G-T or HA5-12G-T-ST devices require the use of "single mode 1310nm compatible" fiber optic cable.

**Aviso!** Dispositivos HA5-12G, HA5-12G-T or HA5-12G-T-ST exigem a utilização de cabo de fibra ótica "compatível com monomodo 1310nm".

**Attention!** Les équipements HA5-12G, HA5-12G-T or HA5-12G-T-ST doivent être utilisés avec un câble en fibre optique monomode compatible 1310 nm.

**Attenzione** I dispositivi HA5-12G, HA5-12G-T or HA5-12G-T-ST richiedono l'uso di un cavo a fibre ottiche "compatibile con 1310 nm monomodo".

**¡Precaución!** HA5-12G, HA5-12G-T or HA5-12G-T-ST dispositivos requieren el uso de cable de fibra óptica "mono modo 1310nm compatibles".

**Vorsicht!** HA5-12G, HA5-12G-T or HA5-12G-T-ST Geräte erfordern den Gebrauch von "Einzelmodus 1310nm kompatiblen" Faseroptik-Kabeln.

# Warranty and Liability Information

---

## Limited Warranty on Hardware

---

AJA Video Systems, Inc. (AJA Video) warrants that the hardware product, not including software components, will be free from defects in materials and workmanship for a period of five years from the date of purchase. AJA Video provides a separate software warranty as part of the license agreement applicable to software components.

If the Customer brings a valid claim under this limited warranty for a hardware product (hereafter, a “product”) during the applicable warranty period, AJA Video will, at its sole option and as the Customer’s sole remedy for breach of the above warranty, provide one of the following remedies:

- Repair or facilitate the repair the product within a reasonable period of time, free of charge for parts and labor.
- Replace the product with a direct replacement or with a product that performs substantially the same function as the original product.
- Issue a refund of the original purchase price less depreciation to be determined based on the age of the product at the time remedy is sought under this limited warranty.

To obtain service under this warranty, the Customer must notify AJA Video of the defect before expiration of the warranty period and make suitable arrangements for the performance of service by contacting AJA Video support through the channels set forth on the support contacts web page at <https://www.aja.com/support>.

Except as stated, the Customer shall bear all shipping, packing, insurance and other costs, excluding parts and labor, to effectuate repair. Customer shall pack and ship the defective product to a service center designated by AJA Video, with shipping charges prepaid. AJA Video shall pay to return the product to Customer, but only if to a location within the country in which the AJA Video service center is located. SOME JURISDICTIONS DO NOT ALLOW THE EXCLUSION OF IMPLIED WARRANTIES OR LIMITATIONS ON APPLICABLE STATUTORY RIGHTS OF A CONSUMER, SO SOME OR ALL OF THE TERMS OF THIS PARAGRAPH MAY NOT APPLY TO YOU.

## Limitation of Liability

---

Under no circumstances shall AJA video BE LIABLE IN ANY WAY FOR ANY LOST, CORRUPTED OR DESTROYED DATA, FOOTAGE OR WORK, OR FOR ANY OTHER INDIRECT, SPECIAL, INCIDENTAL OR CONSEQUENTIAL DAMAGES OR LOST PROFITS, OR FOR ANY THIRD PARTY CLAIM, IN CONNECTION WITH THE PRODUCT, WHETHER RESULTING FROM DEFECTS IN THE PRODUCT, SOFTWARE OR HARDWARE FAILURE, OR ANY OTHER CAUSE WHATSOEVER, EVEN IF AJA VIDEO HAS BEEN ADVISED OF THE POSSIBILITY OF SUCH DAMAGES. AJA VIDEO’S LIABILITY IN CONNECTION WITH THE PRODUCT SHALL UNDER NO CIRCUMSTANCES EXCEED THE PURCHASE PRICE PAID FOR THE PRODUCT. The foregoing limitations apply even if any remedy set forth in this LIMITED WARRANTY fails of its essential purpose. SOME JURISDICTIONS DO NOT ALLOW THE LIMITATION OF LIABILITY FOR PERSONAL INJURY, OR OF INCIDENTAL OR CONSEQUENTIAL DAMAGES, SO SOME OR ALL OF THE TERMS OF THIS PARAGRAPH MAY NOT APPLY TO YOU.

## Governing Law and Language; Your Rights

---

This limited warranty is the only warranty provided by AJA Video on the hardware product. It supersedes all prior or contemporaneous understandings regarding such subject matter. No amendment to or modification of this warranty will be binding unless in writing and signed by AJA Video. The laws of the State of California, USA will govern this warranty and any dispute arising from it. Any translation of this Agreement is intended for convenience and to meet local requirements and in the event of a dispute between the English and any non-English versions, the English version of this warranty will govern. This limited warranty gives you specific legal rights and you may have other rights that vary from jurisdiction to jurisdiction, some of which are noted above.



# Index

---

## Symbols

- 3G-SDI Mode
- Output Tab Screen 14

## A

- AJA Support 2
- Analog Out Map
- Audio Tab Screen 17
- Audio Tab Screen 17

## B

- Bits Per Pixel 11

## C

- Channel Select
- Audio Tab Screen 18
- Colorimetry
- HDR Tab Screen 15
- Color Space
- Output Tab Screen 13
- CTA-861.3
- Static Metadata Descriptors 15

## D

- Default Operation 4
- Diagram
- Simplified Block 5
- Display Mastering Luminance
- HDR Tab Screen 16
- Documentation 7

## E

- EDID Tab Screen 12
- EOTF
- HDR Tab Screen 16

## F

- Features 5
- Frame Rate 14

## H

- HDMI 2.0a
- Static Metadata Descriptors 15
- HDMI Conversion
- Audio Tab Screen 17
- HDR Detected
- HDR Tab Screen 15
- HDR Tab Screen 15
- High Dynamic Range
- HDR Tab Screen 15

## I

- Info Tab Screen 19
- Input Select
- Audio Tab Screen 17

- Input Tab Screen 11
- Installation 6
- Installation on Mac 8
- Installation on PC 7
- I/O Connections 6

## M

- Maximum Content Light Level (CLL)
- HDR Tab Screen 16
- Maximum Frame Average Light Level (FALL)
- HDR Tab Screen 16
- Mini-Config
- Acquiring 7
- Operating 10
- Running 9
- Mini-Config Control 4
- Mini-Converter Documentation 7

## O

- Output Tab Screen 13
- Overview 4

## P

- Pad/Crop
- Output Tab Screen 14
- P to PsF 13

## R

- RGB Range
- Input Tab Screen 11
- Output Tab Screen 13

## S

- Software Download 7
- Software Update 19

## T

- Technical Support 2

## U

- Update Tab Screen 18