

Ki Pro GO

File Based Recorder/Player



Installation and Operation Guide

Version 3.0
Published December 11, 2020



Notices

Trademarks

AJA® and Because it matters.® are registered trademarks of AJA Video Systems, Inc. for use with most AJA products. AJA™ is a trademark of AJA Video Systems, Inc. for use with recorder, router, software and camera products. Because it matters.™ is a trademark of AJA Video Systems, Inc. for use with camera products.

Corvid Ultra®, Io®, Ki Pro®, KONA®, KUMO®, ROI® and T-Tap® are registered trademarks of AJA Video Systems, Inc.

AJA Control Room™, KiStor™, Science of the Beautiful™, TruScale™, V2Analog™ and V2Digital™ are trademarks of AJA Video Systems, Inc.

All other trademarks are the property of their respective owners.

Copyright

Copyright © 2020 AJA Video Systems, Inc. All rights reserved. All information in this manual is subject to change without notice. No part of the document may be reproduced or transmitted in any form, or by any means, electronic or mechanical, including photocopying or recording, without the express written permission of AJA Video Systems, Inc.

Contacting AJA Support

When calling for support, have all information at hand prior to calling. To contact AJA for sales or support, use any of the following methods:

Telephone	+1.530.271.3190
FAX	+1.530.271.3140
Web	https://www.aja.com
Support Email	support@aja.com
Sales Email	sales@aja.com

Contents

Notices	2
Trademarks	2
Copyright	2
Contacting AJA Support	2
Chapter 1 – Introduction	6
Overview	6
Features	6
Media Storage	7
USB Media Formatting Requirements	7
Supported USB Media	7
SMB Support	8
Ki Pro GO REST API Documentation	8
In This Manual	8
Chapter 2 – Ki Pro GO at a Glance	9
Front Panel	9
USB Media Ports	9
USB Port LED Status Indicators	9
High Resolution LCD Display	10
DISP Button	10
User Control Knob	10
STATUS Button	11
CONFIG Button	11
MEDIA Button	11
VU Meters	12
FUNC Button	12
Transport Control Buttons	12
Power ON/OFF Button	13
Headphone Jack and Volume Knob	13
Rear Panel	14
Ref Loop	14
SDI Inputs	14
SDI Channel Outputs	14
HDMI Inputs	15
SDI Monitor Out	15
HDMI Monitor Out	15
Balanced Analog Audio Inputs	16
Unbalanced Analog Audio Monitor Outputs	16
Ethernet Connector	16
Power Connector	16
Chapter 3 – Ki Pro GO Installation	17
Overview	17
What's In The Box?	17
Hardware Installation	17
Ki Pro GO Handle Installation	17
Optional Ki Pro Shelf	18
Applying Power	19
Using AC Power	19
Using DC Power	19
Remote Network Control	20
Direct Connection	20
Direct Connect Procedure	20
LAN Connection	21
TCP/IP Information You May Need	21
LAN DHCP Configuration Procedure	21
LAN Static IP Connection Procedure	21

Chapter 4 – Front Panel Operation	23
Overview	23
Overlay Display Content	23
Initial Overlay	23
Status Menu Display	24
CONFIG and MEDIA Displays	27
Basic Recording and Playback	27
Recording Clips With The Front Panel	27
Routing Video and Audio Inputs	27
Recording Clips	28
Recording Backup Clips	28
Media Recording Capacity	28
Playing a Clip With the Front Panel	29
Select, Cue and Play a Clip	29
Clip or All Playback	29
Loop Playback	30
CONFIG Menus	30
CONFIG Menu Parameters	30
1.0 Enable Channel 1	30
1.1 Video Input 1	30
1.2 Audio Input 1	31
2.0 - 4.2 Channel 2, 3, and 4 Input Settings	31
5.0 Loss of Video	31
6.0 SDI Monitor Channel	31
6.1 HDMI Monitor Channel	31
6.2 Headphone Audio	31
6.3 Super Out	32
6.4 Screen Overlay Opacity	32
6.5 Time Code Size	32
7.0 3G SDI Level	32
7.1 HDMI/EDID Override	32
7.2 Inter/PsF Override	33
7.3 Progressive Playback	33
7.4 Genlock Source	33
7.5 Analog Audio	33
About Ki Pro GO Timecode	34
8.0 Timecode In	34
8.1 Timecode Value	34
8.2 Timecode Value Type	34
9.0 IP Address Type	35
9.1 IP Address	35
9.2 Subnet Mask	35
9.3 Default Gateway	35
9.4 System Name	35
9.5 MAC Address	35
10.0 Date/Time	35
10.1 Time Zone	35
10.2 Daylight Savings	36
10.3 FUNC Button	36
10.4 Screen Dimmer	36
10.5 Screen Brightness	36
11.0 Serial Number	36
11.1 Software Version	37
12.0 Recall Preset	37
12.1 Store Preset	37
99.0 Factory Reset	37
MEDIA Menus	37
MEDIA Menu Parameters	37
About Clip Names	37
21.0 Channel 1 Clip Name	38
21.1 Channel 1 Encode Quality	39

21.2 Channel 1 Encode Bit Depth	39
21.3 Channel 1 Encode Sampling	39
22.0 Channel 1 Primary Rec Dest	39
22.1 Channel 1 Backup Rec Dest	39
23.0 - 28.1 Channel 2, 3, and 4 Encode Settings	40
29.0 Record Minutes (max)	40
31.0 Clip Number	40
32.0 - 32.4 USB Port 1-5 Media Path.	40
32.5 SMB Server and Share	40
32.6 SMB Network Record Path	40
32.7 SMB Dialect	41
32.8 Domain	41
32.9 Domain Username	41
32.10 Domain Password	41
34.0 Playback Media Source	42
34.1 Playback Type	42
34.2 Loop Playback	42
About Formatting USB Media	42
35.1 - 35.5 Format USB Port 1-5 Media	42
35.6 Format All USB Media	43
Chapter 5 – Browser Remote Control	44
Overview	44
Ki Pro GO Web UI Description.	44
Ki Pro GO Web UI Screens	45
Status Screen	45
Config Screen	46
Media Screen	48
Gang Screen	49
Presets Screen	51
Network Panel.	52
Firmware Screen	53
Firmware Update Procedure	53
Safeboot.	54
Playlists Screen	54
Quick Cueing	55
Clip Playback	55
Clip Download	55
Playlist Refresh.	55
Appendix A – Specifications	56
Ki Pro GO Tech Specs	56
Ki Pro GO Encoding Parameters	59
H.264 and Bitrates	59
Entropy Encoding.	60
I/P Frame Structure (GOP Length)	60
Bit Depth and Sampling.	60
Ki Pro GO Dimensions.	61
Appendix B – Safety and Compliance	64
Warranty and Liability Information	73
Limited Warranty on Hardware.	73
Limitation of Liability	73
Governing Law and Language; Your Rights	73
Index.	75

Chapter 1 – Introduction



Overview

AJA's Ki Pro GO is a portable genlock free, multi-channel H.264 HD and SD redundant recorder/player. Ki Pro GO records pristine quality video to off-the-shelf USB media. The flexible architecture of Ki Pro GO is designed for live production, sports, corporate events, training, houses of worship and more.

Ki Pro GO combines the Ki Pro family's intuitive design, flexibility and high quality with encoding/decoding of H.264 recording and playback in a compact 2RU, half-rack width form factor. Users can easily record up to four channels of HD and SD content from SDI and HDMI sources to standard USB media, and/or to SMB-based network storage. Genlock free recording eliminates the need to synchronize four input sources, while redundant recording provides multiple back ups in the field to protect the recorded video. Four 3G-SDI and four HDMI ports ensure a high quality source with standard cabling compatibility options. HDMI and SDI multi-channel monitoring enables Ki Pro GO to display up to four channels of video as a matrix monitoring output on one HDMI and/or SDI monitor.

Ki Pro GO also provides the ability to independently map any physical input to non-physical channels for recording, and to also provide an individual independent back up recording for every individual primary recording.

Designed to be either portable or rack-mountable with half rack wide 2RU high dimensions, Ki Pro GO is well suited for use in studio/truck environments in addition to on-set and even digital signage applications.

Menus and images are beautifully rendered on a high resolution front panel LCD display enabling detailed playback and monitoring in all environments. Ki Pro GO also supports remote operation over a network using a web browser.

Features

- Multi-channel H.264 recording
- 5 x USB recording media ports, compatible with off-the-shelf USB media
- Supports recording and playback to and from Network Attached Storage (NAS) using the Service Message Block (SMB) protocol
- Redundant recording
- Genlock free inputs
- 3G-SDI input (4x BNC connectors)
- 3G-SDI output (4x BNC connectors)

- HDMI v1.4a input (4x HDMI type A connectors)
- 2-channel embedded audio per video input
- Physical input matrix channel mapping
- 3G-SDI monitor output (1x BNC connector)
- HDMI v1.4a monitor output (1x HDMI type A connector)
- HDMI and SDI multi-channel matrix monitoring
- Five different High Variable Bit Rate (VBR) Recording Profiles
- Two balanced XLR analog audio inputs, mic/line/48v switchable (compatible with LTC)
- Single-channel clip playback
- Easy-to-use web UI, compatible with standard web browsers
- Front panel button controls with integrated HD resolution screen
- Appliance operation: Ki Pro GO does not require a host PC to setup or operate.
- RCA Audio output (2x mono RCA connectors)
- Headphone jack (1x 3.5mm Jack)
- 10/100/1000 Ethernet LAN (1x RJ-45 connector)
- Internal web server for remote control configuration via LAN
- 2RU, Half-rack Form factor
- Dual 12 Volt AC/DC power (2x 4-pin XLR connectors)
- 20 Preset registers for storing and recalling system preset configurations
- Alarms to alert users to conditions that may need attention



Caution! The AJA Ki Pro GO contains a lithium battery soldered in place permanently (it is not user replaceable). If you ever dispose of the Ki Pro GO, ensure you follow local regulations for safe disposal. The lithium battery shall not be exposed to excessive heat, such as sunlight or fire.

Media Storage

Ki Pro GO supports commonly available USB drives for economical media storage. In addition, Ki Pro GO supports network attached storage (NAS) using SMB.

USB Media Formatting Requirements

Ki Pro GO can store files on USB media in the following file systems:

- exFAT (default format)
- FAT32
- FAT16

NOTE: AJA recommends using and/or formatting to exFAT for best results due to file size constraints of FAT32 and FAT16.

Newly purchased USB media is usually pre-formatted by the manufacturer before shipment.

Supported USB Media

The USB media you use should be high quality, and have a speed rating appropriate for your recording and playback requirements. AJA has tested selected USB media, and the current list of these products is available at:

<https://www.aja.com/products/ki-pro-go#support>

SMB Support

Network Attached Storage (NAS) using SMB (Server Message Block) protocol is available for both recording and playback, supporting SMB versions 3.1.1, 3.0.2, 3.0, 2.1, 2.0, or 1.0.

Ki Pro GO REST API Documentation

AJA's REST automation API provides a platform from which you can issue commands to an AJA device's internal web server, allowing remote systems the ability to control AJA embedded or networked devices. With this control framework, you can build integration and automation scripts, using any scripting language, allowing you to take full advantage of the device's functionality.

This documentation is available at the following link:

https://gitlab.aja.com/pub/rest_api

In This Manual

Chapter 1 provides an overview of hardware and software features and options.

Chapter 2 gets you started with Ki Pro GO, introducing the front panel controls and rear connector features.

Chapter 3 gives detailed installation information.

Chapter 4 provides instructions for operating the Ki Pro GO from the front-panel controls and LCD display.

Chapter 5 discusses remote web browser control of Ki Pro GO via Ethernet.

Appendix A lists specifications.

Appendix B provides safety and compliance information.

Chapter 2 – Ki Pro GO at a Glance

Front Panel

Figure 1. Ki Pro GO Front Panel



The Ki Pro GO front panel includes:

- Four USB 3.2 Gen 1 (5 Gbps) ports, with status LEDs
- Large LCD display, with video monitoring and menu and status overlays
- User Control Knob for menu navigation and adjusting parameters
- DISP, STATUS, CONFIG, and MEDIA menu access buttons
- FUNC button, for rapid configuration
- Transport controls
- Headphone volume control and headphone jack
- Power button

USB Media Ports

The four USB media ports on the front each receive standard pre-formatted USB media. A fifth USB media port is available on Ki Pro GO's rear panel.

These five ports are USB 3.2 Gen 1 (5 Gbps), support 5V 1A max current per port, and are also compatible with the following standards:

- USB 2.0 (480 Mbps)
- USB 3.0 (5 Gbps)*
- USB 3.1 Gen 1 (5 Gbps)*

*Also referred to as SuperSpeed USB

USB Port LED Status Indicators

The USB LEDs indicate the state of the media ports, and when it is safe to remove media from Ki Pro GO.

- Off - No media is mounted or the inserted media is not usable. Media in that port (if present) cannot be used and can safely be removed.

- Green - Valid media has been inserted and is not currently being used for recording or playback. Media in that port should be safe to remove.
- Green Flashing - Media is mounted and playing back a clip. The media itself is probably safe to remove (no data loss will result), but removing the media will cause a playback error.
- Amber Flashing - Media is mounted and recording. Media should not be removed, as it will interrupt the recording.



Caution! *Failure to properly mount or dismount media, or an unexpected loss of power while recording, can result in an unrecoverable data loss.*

High Resolution LCD Display

The front panel LCD display shows a quad split display of all four Ki Pro GO recording channels. Various overlays are available for configuration menus and other information, accessed with the buttons on the right. Menu navigation and selection is accomplished with the User Control Knob.

DISP Button

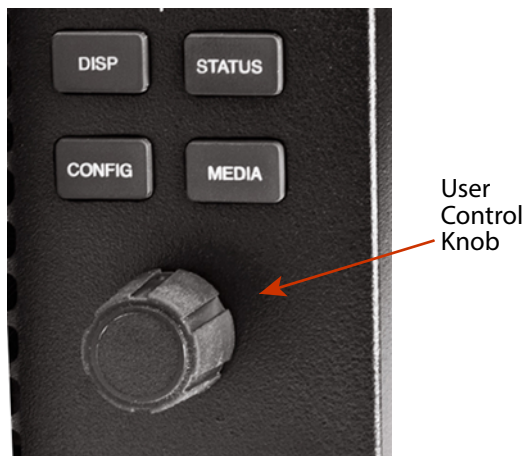
Use the DISP button to toggle video overlay display modes. Sequential presses of the button cycles through the display modes:

1. No overlay – display is video monitor only
2. Top and bottom status overlay
3. Top and bottom status overlay plus VU meters
4. Top, bottom, VU meters, and the last displayed status or configuration screen. That operating mode (Status, CONFIG or Media) will also automatically be selected, and that mode's front panel button will be highlighted.

User Control Knob

The User Control Knob on the right side of the Ki Pro GO front panel can be used to scroll through and select menu items. After scrolling to and high-lighting a menu item of interest, push the knob to select. To cancel a selected menu item, rotate the knob to highlight EXIT and push the knob in to return to the top level.

Figure 2. Ki Pro GO User Control Knob



When an active configuration menu is displayed, pressing and holding the knob will restore that menu's factory default setting.

When not in a configuration mode and media is mounted with clips available, you can use the User Control Knob to scroll through the clips on that media.

STATUS Button

When it is not highlighted, you can press the STATUS button to display the status overlay. Status information includes video/audio inputs and formats (Chnl/Input tab screen), file encoding, record path, and file names (File/Encode tab screen) and alarm information (Alarms tab screen). After the STATUS button is pressed, the selector knob can be rotated to display these tab screens in sequence.

A blinking STATUS button indicates Alarms are present. Press the STATUS button to immediately display the Alarms tab, where any active alarms or warnings will be reported.

When the STATUS button is highlighted, pressing STATUS hides the Status overlay.

CONFIG Button

When it is not highlighted, you can press CONFIG to access the CONFIG menu overlay. If the transport is active (video is playing or being recorded) you will be prompted to stop the transport by pressing the STOP button. Pressing CONFIG when it is highlighted will exit the CONFIG menu and return to the previously selected display.

Once in CONFIG mode, rotate the User Control Knob to scroll through the menu system, push the knob to enter a selected menu, rotate the knob to scroll through the menu selections, and then push the knob again to select that setting. To leave a menu, scroll to Exit and press the knob. Pressing and holding the button in restores the factory default setting for that menu.

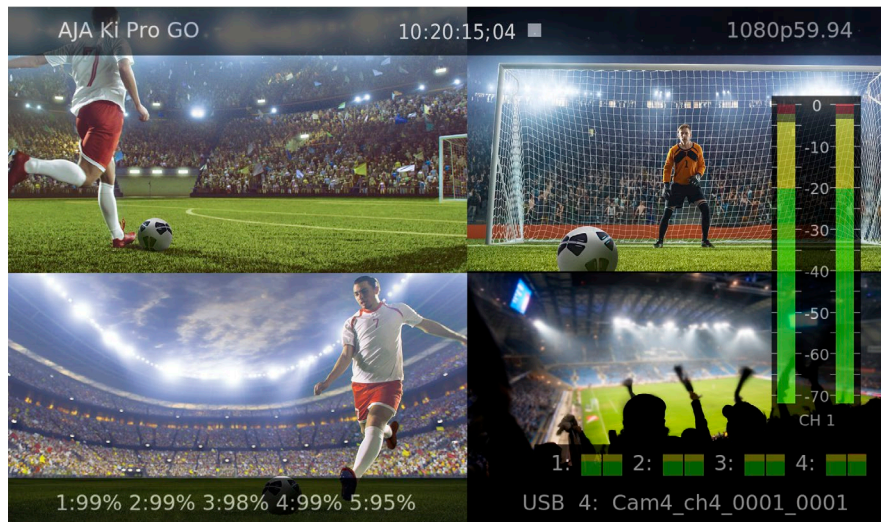
MEDIA Button

When it is not highlighted, you can press the MEDIA button to enter the MEDIA menu overlay. If the transport is active (video is playing or being recorded) you will be prompted to stop the transport by pressing the STOP button. Pressing MEDIA when it is highlighted will exit the MEDIA menu and return to the previously selected display.

Once in MEDIA mode, rotate the User Control Knob to scroll through the menu system, push the knob to enter a selected menu, rotate the knob to scroll through the menu selections, and then push the knob again to select that setting. To leave a menu, scroll to Exit and press the knob. Pressing and holding the button in restores the factory default setting for that menu.

VU Meters

Figure 3. Audio Meters Front Panel Display Example



Screen overlays are provided on the LCD to display audio VU meters. Meters are color coded to report signal strength:

- Green - audio source signal level is in the “safe” area (no clipping). The signal strength is also shown vertically, so you can see if the signal level is low. Generally, it’s preferred to have the signal near the top of the green or even occasionally peaking into the yellow.
- Yellow - audio source signal levels are at the peak edge of the safe area before clipping will occur.
- Red - audio source amplitude is too hot and the signal is clipping at its signal peaks. You should reduce the input gain at its source (camera, mixer or source equipment supplying the signal).

A large audio VU meter is available to display the level for the Ki Pro GO’s headphone audio. This meter can be shown or hidden by pressing the front panel Display button.

You can also display smaller audio meters for the first two channels of each recording channel, by pressing the front panel Display button.

FUNC Button

The FUNC button can be configured to either directly access the Playback Media Source menu, or be disabled.

Transport Control Buttons

The transport buttons are always active, except during actual recording when only the STOP button can be used.

STOP - The square symbol STOP button has a dual function. When playing back a clip (PLAY, FFWD, or REV) the first push of STOP pauses the playback. When paused, the current frame of the clip is displayed as a still, and the STOP button flashes indicating that clip is paused. A second push of STOP stops the playback. The STOP button is fully illuminated in stop mode.

PLAY > - Press PLAY to begin forward playback of the current clip at normal speed.

RECORD - Press the round red RECORD button to begin recording. Once in RECORD mode, all other transport buttons are locked-out except the STOP button.

FFWD >> - Press FFWD to begin fast playback of the current clip at 2x speed. Successive pushes increase the speed to 4x, 8x, and 16x. (Pushing the button after 16x speed is reached has no further effect.) When fast-forwarding, audio is muted.

REV << - Press REV when not highlighted to begin playback of the current clip in reverse at 1x speed. Successive pushes increase the speed to 2x, 4x, 8x, and 16x. (Pushing the button after 16x speed is reached has no further effect.) When playing in reverse, audio is muted for all speeds.

Power ON/OFF Button

Press the Power button to turn Ki Pro GO power On and Off. When power is On the button is illuminated.

NOTE: When power is first applied to Ki Pro GO, the unit powers up immediately (without pressing the button). This facilitates a quick return to operation if there is a power interruption.

In normal operation to turn power on, press the button once. Pressing the button will begin power-up and display start-up progress on the front panel display.

To power down, press and hold the power button down for three seconds (the display will count down). This process prevents accidental power-off during normal operation. You can abort the power-down process by simply removing your finger from the power button before the three seconds have elapsed.

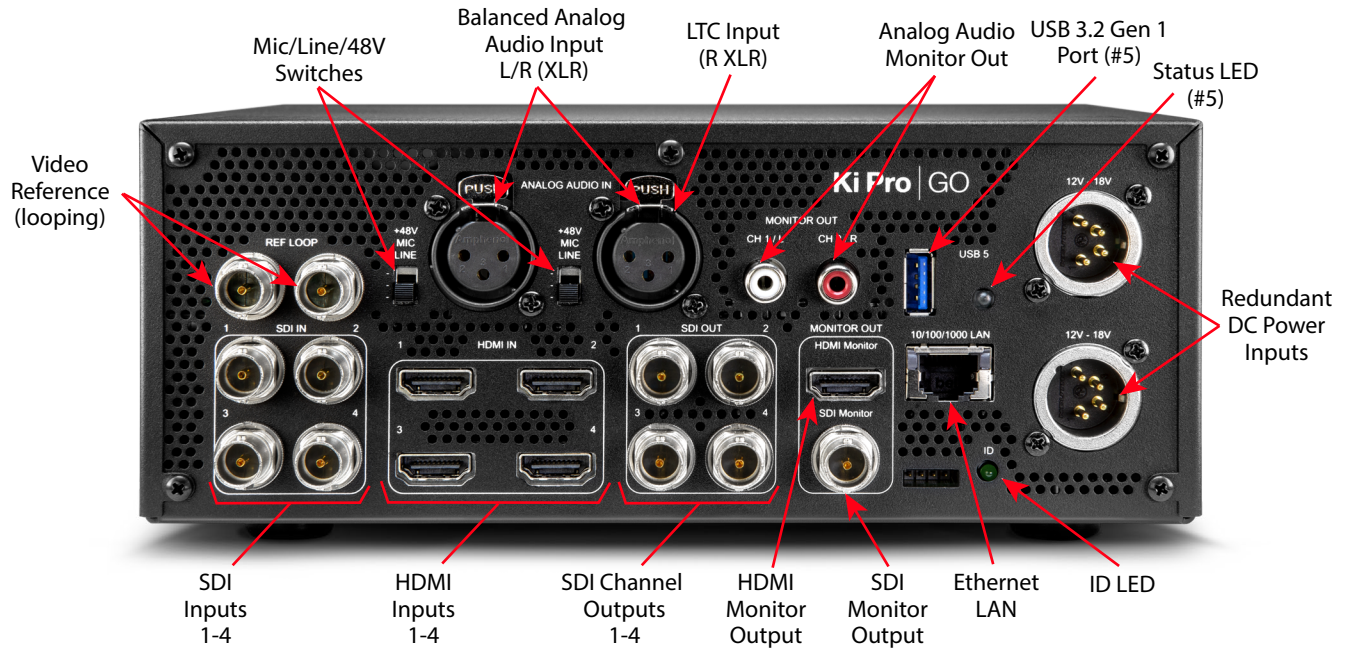
Headphone Jack and Volume Knob

1/8" (3.5mm) miniature stereo TRS connection is available for standard stereo headphones.

To adjust headphone listening level, press the volume knob in and the knob will pop out for easy adjustment. After adjustment, you can press the knob back in to reduce the chance of accidental headphone level changes.

Rear Panel

Figure 4. Ki Pro GO Rear Panel



Ref Loop

The Reference Loop BNCs accept a reference timing signal. Incoming video sources do not have to be genlocked due to Ki Pro GO's input frame syncs.

The reference, if used, can be analog SD blackburst or HD tri-level sync. The two BNCs are a passive loop: one BNC is for the Input, and the remaining BNC can be connected to another piece of equipment in the reference chain or terminated.

NOTE: For proper operation the input reference signal must be stable and properly terminated using a 75-ohm terminator on either the unused loop connector or the last piece of downstream equipment to which the reference video is connected.

SDI Inputs

Four input BNC connectors are provided, each supporting 3G-SDI video up to 1080p 60, and each accepts the first two channels of embedded 24-bit digital audio. Only single link SDI video is supported.

Each input can be routed to any or all of the four Ki Pro GO recording channels. Up to four video inputs can be recorded as clips at the same time.

Two channels of audio, RP-188 timecode, and VPID are preserved. All other ANC data will be lost.

SDI Channel Outputs

Four output BNC connectors are available, each supporting 3G-SDI video up to 1080p 60, and includes two channels of embedded 24-bit digital audio.

Each numbered SDI output BNC is linked one-to-one to each of the four Ki Pro GO's recording/playback channels' output. Because the SDI (and HDMI) input signals can be routed, the SDI output BNC s not necessarily associated with the similarly numbered SDI input BNC.

During clip playback, all four SDI Channel output BNCs will carry the same video and audio signals of that playing clip.

IMPORTANT: During recording, an SDI BNC output signal is not a pass-through E-to-E signal of the input, and is not necessarily linked to the same numbered SDI input BNC connector.

During clip recording, a delay exists between the each of the Ki Pro GOs' video input and output signals:

- Three frames at 23.98, 24, 25, 29.97, 30
- Six frames at 50, 59.94, 60
- The Ki Pro GO output will also add/drop frames if the input is not aligned with the sync source.

RP-188 timecode and VPID are preserved by re-inserting on the output, but all other ANC data will be lost. Embedded audio can be preserved and re-inserted on the output. Audio is sample-rate-converted prior to re-insertion.

NOTE: Which two audio channels are embedded into each SDI Output is determined by the audio embedding settings being used for that Ki Pro GO recording channel audio input setting, to either follow the video input's embedded audio or embed the analog audio inputs.

HDMI Inputs

Four full size input HDMI connectors are provided, each supporting 3G-SDI video up to 1080p 60, and each accepts the first two channels of embedded digital audio.

Ki Pro GO accepts 32 kHz, 44.1 kHz, and 48 kHz sample rate HDMI embedded audio, and converts it to 48 kHz internally.

Each input can be routed to any or all of the four Ki Pro GO recording channels. Up to four video inputs can be recorded as clips at the same time.

NOTE: When using the Ki Pro GO HDMI connection and attaching it to any HDMI audio or video accessory, you must use a ferrite-beaded HDMI cable, HH-28F-06, between the HDMI output port of the Ki Pro GO and the HDMI accessory to maintain regulatory compliance.

SDI Monitor Out

One SDI Monitor Out BNC connector allows monitoring the video and embedded audio output of one or all of the Ki Pro GO's recording/playback channels. Which channel(s) are monitored is determined by the setting of the SDI Monitor Channel parameter. System timecode is also embedded in this output.

HDMI Monitor Out

One full size HDMI Monitor Out connector allows monitoring the video and embedded audio output of one or all four of the Ki Pro GO's recording/playback channels. Which channel(s) are monitored is determined by the setting of the HDMI Monitor Channel parameter.

Balanced Analog Audio Inputs

Two XLR connectors provide Mic/Line/48V analog audio input, which can be routed to any or all of the Ki Pro GO recording channels. The right audio input channel also supports LTC input, in which case the level selector switch should be set to Line.

Unbalanced Analog Audio Monitor Outputs

Two RCA connectors provide line level analog audio output, carrying the same signal sent to the front panel headphone output.

Ethernet Connector

An RJ-45 connector provides a 10/100/1000 Ethernet port for connecting Ki Pro GO directly to a computer, or to a hub or switch for connection to a LAN, allowing Ki Pro GO remote control and configuration. In addition this network connector can be used for SMB-based NAS recording and playback.

Ki Pro GO is compatible with CAT-5e or CAT-6 straight-through or cross-over Ethernet cables, automatically detecting which is used. Once connected and properly configured, Ki Pro GO can then be controlled by a web browser on the LAN.

Power Connector

On the back of Ki Pro GO are two standard 4-pin male XLR connectors for supplying 12-Volt DC power to the unit. You can use either the supplied AC Adapter or furnish your own battery source. Since the connector is an industry standard pinout, choices are varied and flexible. Many 3rd party vendors offer products using this standardized power connector.

- Pin 1: -
- Pin 4: +
- Pins 2 and 3: not used



Caution! *Ki Pro GO has no user-serviceable parts. To remove power from the unit, remove the 4-pin XLR power connector to ensure disconnection. Refer all servicing to qualified service personnel. Servicing is required when the device has been damaged in any way, such as power-supply cord or plug is damaged, liquid has been spilled or objects have fallen into the device, the device has been exposed to rain or moisture, does not operate normally, or has been dropped*

Chapter 3 – Ki Pro GO Installation

Overview

Ki Pro GO can be used on a desktop by simply connecting power, video and audio inputs and outputs, and inserting USB media. Front panel controls allow Ki Pro GO configuration, and record and play functions.

Ki Pro GO also supports remote web control via Ethernet, once configured for network operation.

What's In The Box?

When you unpack your Ki Pro GO, you'll find the following components:

- Ki Pro GO Recorder
- AC Adapter 110/220 with industry standard 4-pin XLR connector for powering the Ki Pro GO. A standard North American line cord with 3-prong plug is included.
- Handle Installation Kit

Please save all packaging for shipping the Ki Pro GO should you need to do so.

Hardware Installation



Caution! Do not install near any heat sources such as radiators, heat registers, stoves, or other apparatus (including amplifiers) that produce heat



Caution! Do not block any ventilation openings. Install in accordance with the manufacturer's instructions.

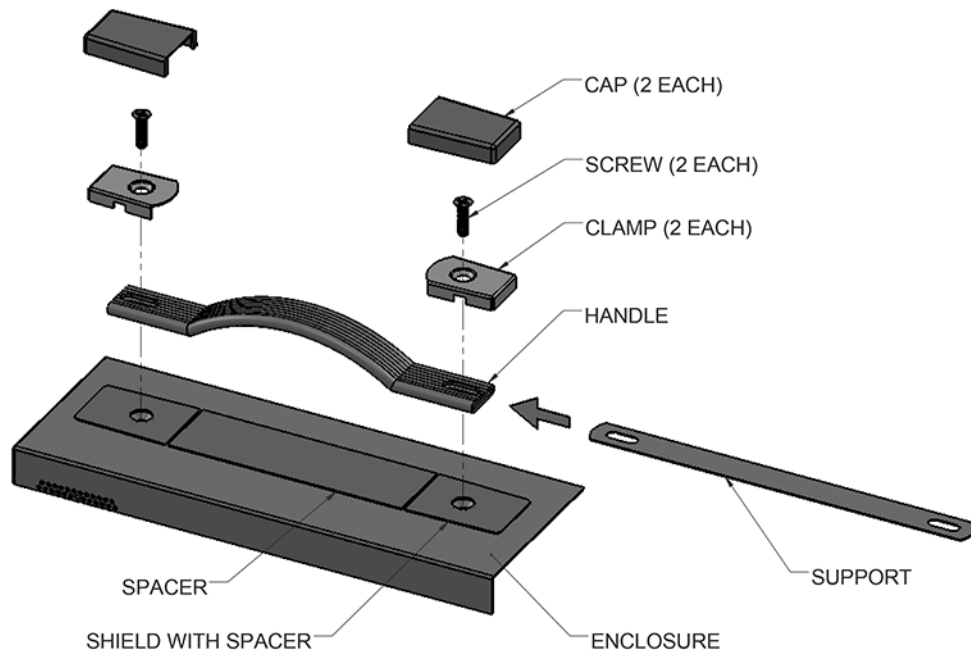
Ki Pro GO Handle Installation

For units that will be moved often, AJA provides a sturdy handle.

Figure 5. Ki Pro GO with Handle Installed



Figure 6. Ki Pro GO Handle Assembly



1. Remove the two screws from the right side of the enclosure and keep for reuse.
2. Place the Shield with Spacer (temporary) on top of the Enclosure, aligning the holes.
3. Slide the Support into the Handle.
4. Place the Handle on top of the Shield, aligning the holes.
5. Place the Clamps on top of the Handle, aligning the holes.
6. Insert the two screws through the Clamps, Handle, Support, and Shield and into the enclosure.
7. Snap the Caps over the Clamps and tear away the Spacer from the Shield.

Optional Ki Pro Shelf





AJA offers this rack-mount shelf accepting two Ki Pro units in a 2RU footprint. For example, in the same rack you can mount two Ki Pro GOs to simultaneously record eight sources, or you can mount a Ki Pro Ultra 12G and a Ki Pro GO, which allows simultaneous recording of high resolution .MOV or .DNX files, as well as separate compressed .MP4 clips for immediate delivery to a client or for direct use as proxy media for post production.

Figure 7. Ki Pro GO mounted in Rackmount Shelf with a Ki Pro Ultra 12G.



NOTE: The AJA part number for the optional Ki Pro Shelf is "KPU-SHELF." Please check with your AJA reseller for pricing and availability.

Applying Power

	Caution! Do not defeat the safety purpose of the polarized or grounding-type plug. A polarized plug has two blades with one wider than the other. A grounding type plug has two blades and a third grounding prong. The wide blade or the third prong are provided for your safety. If the provided plug does not fit into your outlet, consult an electrician for replacement of the obsolete outlet.
	Caution! Since the Mains plug is used as the disconnection for the device, it must remain readily accessible and operable.
	Caution! Protect the power cord from being walked on or pinched particularly at plugs, convenience receptacles, and the point where they exit from the device..
	Caution! Unplug this device during lightning storms or when unused for long periods of time.

Using AC Power

To begin using Ki Pro GO, plug the 4-pin XLR on the supplied AC adapter into the XLR power socket on the rear of Ki Pro GO. Then plug the AC adapter line cord into 110 VAC or 230 VAC (the supply is auto sensing). Two power supplies can be used for redundancy.

NOTE: When connected to power, Ki Pro GO will immediately begin the power-up procedure. This automatic start-up allows the unit to return to operation as soon as an unexpected power interruption is corrected.

Figure 8. Ki Pro GO Power Supply Connections



Using DC Power

To run Ki Pro GO on DC power, plug a 3rd-party industry standard 12 Volt battery pack with a 4-pin female XLR connector into the power connector on rear of the Ki Pro GO. The battery should be capable of supplying a sustained 3.3 A (as is supplied by the AC Adapter provided). Battery packs are available from a variety of sources.

NOTE: To operate Ki Pro GO properly, batteries should not have voltage lower than 12 volts and should not have voltage that exceeds 18 volts.

Ki Pro GO is a low-wattage device so many batteries can power it for several hours at a time. Ki Pro GO displays a "Low Battery" warning prompt to help you stop recording before battery failure. We also recommend the use of batteries with metering or remaining power indications. Two batteries can be used for redundancy, which can be swapped for power of unlimited duration, only limited by the number of charged batteries on hand.

Remote Network Control

Ki Pro GO can be controlled by a computer using a single CAT-5e or CAT-6 Ethernet cable (straight or cross-over), or by using an Ethernet 10/100/1000 local area network (LAN) connection to Ki Pro GO's Ethernet RJ-45 connector.

An optimized web server running on Ki Pro GO allows you to remotely monitor and adjust parameter settings via a browser client running on a connected computer.

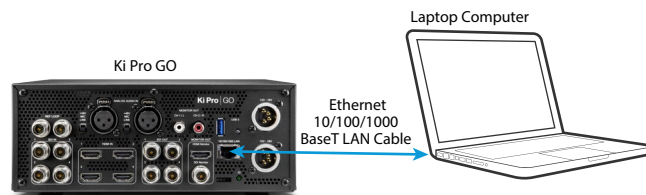
NOTE: Exposing Ki Pro GO on a broadband WAN is not generally recommended since anyone on the Internet could potentially access Ki Pro GO.

The LAN connection on Ki Pro GO is internally intelligent and communicates via standard "straight-through" CAT Ethernet cables or null-modem (cross-over) cables without any configuration or strapping required.

Direct Connection

You may be able to control it by simply connecting it to a Mac or PC using one RJ-45 cable.

Figure 9. Ki Pro GO LAN Connection Example, Direct to Laptop



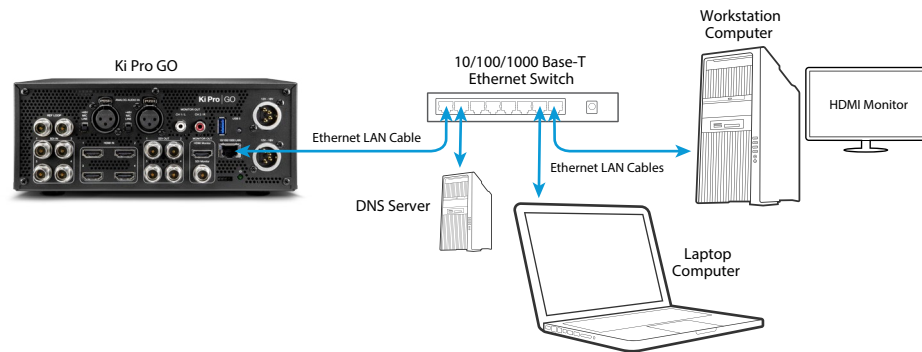
Direct Connect Procedure

1. Connect Ki Pro GO to your computer with a CAT Ethernet cable.
2. Press the Ki Pro GO front panel **CONFIG** button to show the Configuration menus on the front panel display.
3. Go to the IP Address Type menu and ensure that **Static** is selected in the Ki Pro GO's IP Address Type menu, then go to the Address menu and enter the static address you wish to use for the KPG.
4. Set a compatible static IP address on the PC, and you're good to go.
5. Go to the Ki Pro GO **IP Address** menu, note the IP address displayed, and enter that IP address into that computer's web browser.
6. The Ki Pro GO webpage will be displayed, allowing complete control of the unit.

LAN Connection

A LAN is a shared network that includes other Ethernet devices all attached via a hub or switch. Multiple computers on the network will then be able to control that Ki Pro GO by entering its IP address into each computer's web browser.

Figure 10. Ki Pro GO LAN Connection Example using a LAN



TCP/IP Information You May Need

LANs may be divided into zones, and devices on a LAN may have dynamically assigned (DHCP) IP addresses, or fixed (static) IP addresses. Before connecting Ki Pro GO to the LAN, talk to your network administrators to find out how they want it connected (DHCP or Static IP). If your LAN requires static IP addresses, also ask your IT administrator for the Subnet Mask and Default Gateway IP addresses (your LAN's Internet router).

LAN DHCP Configuration Procedure

Because Ki Pro GO ships configured by default for DHCP operation, it can automatically connect to a properly configured network.

1. Connect Ki Pro GO to a LAN hub or switch operating as part of a DHCP network, using a CAT Ethernet cable.
2. Connect a DHCP configured computer to the network using a CAT Ethernet cable.
3. Press the Ki Pro GO front panel **CONFIG** button to show the Configuration menus on its front panel display.
4. Go to the **IP Address Type** menu and ensure that **DHCP** is selected in the Ki Pro GO's **IP Address Type** menu.
5. Go to the Ki Pro GO **IP Address** menu, note the IP address displayed, and enter that IP address into your computer's web browser.
6. The Ki Pro GO webpage will be displayed on your network connected computer's web browser, allowing complete control of the unit.

LAN Static IP Connection Procedure

This procedure assumes you will be using a computer that is already configured for use on the LAN.

1. Ask your network system administrator for the IP information the Ki Pro GO is required to use on that network.
2. Press the Ki Pro GO front panel **CONFIG** button to show the Configuration menus on the front panel display.
3. Ki Pro GO **IP Address Type** menu and select **Static Addr.**

4. Connect Ki Pro GO using a CAT Ethernet cable to a LAN hub or switch operating as part of a DHCP network.
5. Go to the Ki Pro GO **IP Address** menu and enter the IP address provided by your network system administrator.
6. If necessary, also go to the Ki Pro GO **Subnet Mask** menu and the **Default Gateway** menu and enter the information provided by your network system administrator.
7. Power cycle the Ki Pro GO.
8. After reboot, go to the Ki Pro GO **IP Address** menu, and note the IP address displayed.
9. Enter the Ki Pro GO's IP address into your network connected computer's web browser.
10. The Ki Pro GO webpage will be displayed, allowing complete control of the unit.

See "[Chapter 5 Browser Remote Control](#)" on page 44 for more information.

Chapter 4 – Front Panel Operation



Overview

The simplest way to control Ki Pro GO is to use its front panel menu and controls. See ["Chapter 5 Browser Remote Control" on page 44](#) for information about web browser operation.

Overlay Display Content

Ki Pro GO's front panel display different information in various menu overlays.

Initial Overlay

On power up, Ki Pro GO initially overlays information at the top and bottom of the front panel menu screen.

Figure 11. Initial Display Overlay



Top Line

The top line displays:

- Ki Pro GO system name, or a red error message
- Current clip timecode
- Clip format

Bottom Line

The bottom line displays:

- Percentage of media capacity available for each port
- Currently selected media port and clip name

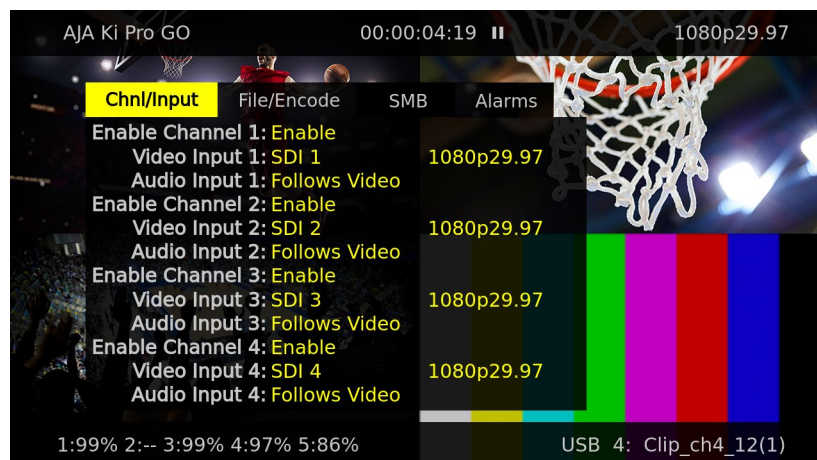
Three Display modes are accessed via the STATUS, CONFIG, and MEDIA buttons.

Status Menu Display

In the Status menu, the User Control Knob toggles between four tabs: Chnl/Input, File/Encode, SMB, and Alarms. These are Read-Only displays.

Chnl/Input Tab

Figure 12. Status Menu, Chnl/Input Tab.

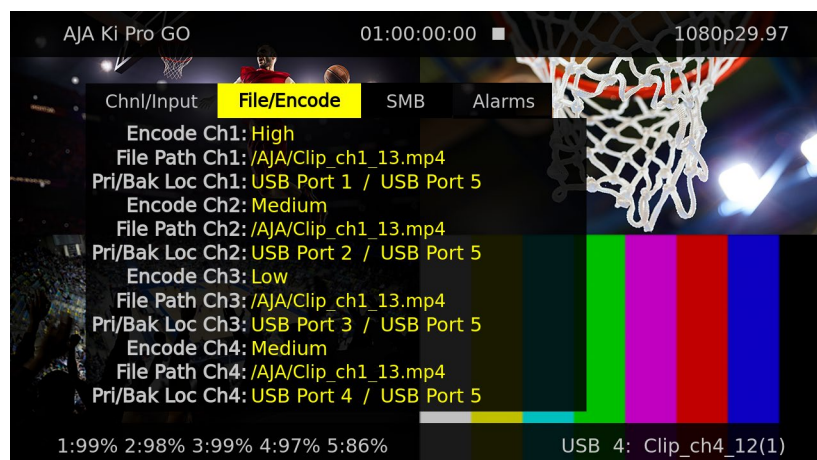


This menu shows the configuration status of Ki Pro GO's four recording and playback channels. Status information includes:

- Channel Enable
- Video and Audio Inputs
- Video Format

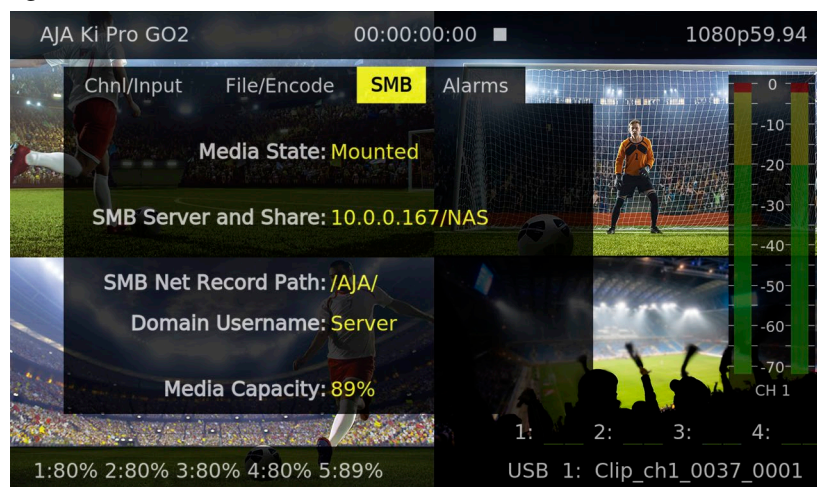
File/Encode Tab

Figure 13. Status Menu, File/Encode Tab.



This menu shows the configuration status of Ki Pro GO's four channels.

Figure 14. Status Menu, SMB Tab.

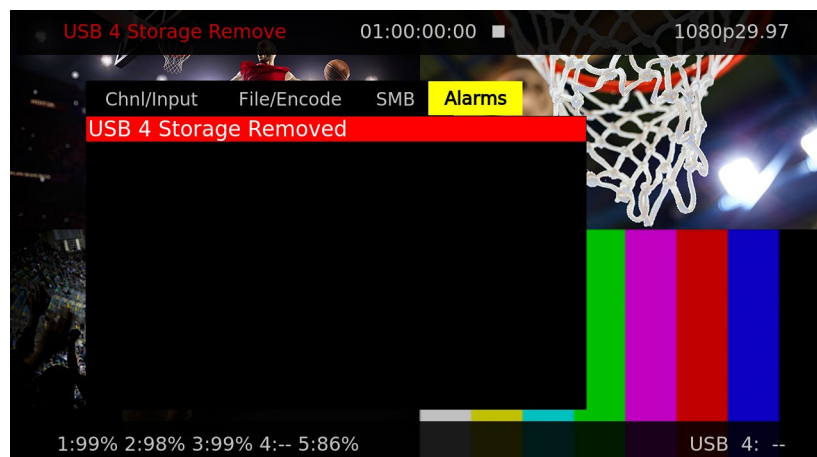


This menu shows the configuration status of Ki Pro GO's SMB network recording.

Status information includes:

- Media State: (Mounted status is displayed as yellow text, while UnMounted or Error status is displayed in red text)
- SMB Server and Share:
- SMB Net Record Path:
- Domain Username:
- SMB Media Capacity:

Figure 15. Status Menu, Alarms Tab.



This menu reports warnings and alarms. Some alarms will automatically be shown on the top bar of the display. Others will be indicated by the STATUS button flashing.

Once a Ki Pro GO alarm is active, the STATUS button light will blink for as long as the alarm is present. This alerts you so you'll know the reasons for the alarm condition are still active. You can then check the Alarms display by pressing the STATUS button and using the User Control Knob to scroll to the Alarms tab.

If you enter the CONFIG or MEDIA menus after an alarm notification, the alarm display will go away. Pushing any button always returns Ki Pro GO to its pre-alarm state. However, if you are unable to correct the alarm condition after this initial button push, when you leave these menus, the alarm notification will reappear on the display.

Ki Pro GO features a variety of alarms to help you diagnose the condition of the unit, possible configuration issues, or possible signal issues.

Warning: Media Unformatted - May appear if Ki Pro GO does not recognize the file system on the media or the media has never been formatted.

Warning: Media Low - Appears when the media only has 10% of capacity remaining.

Warning: Media Full - Appears when only 1% of media capacity remains. Recording will continue, however, until the media is completely filled.

Warning: Dropped Frames - May appear if media is under-performing and cannot keep up with the data rate required to make a recording or perform a playback. If you see this prompt during recording, recordings will stop. If this prompt appears, you might consider backing up your current recordings and formatting the media. For playback, you might simply re-attempt playback.

Warning: Input Format Changed - This prompt appears if a recording is started and the signal is lost or changed. If this occurs, Ki Pro GO stops the recording that is in progress (unless the Loss of Video CONFIG menu parameter is set to continue recording.)

Warning: No Video Input - May appear if there is no video input to Ki Pro GO. No recording will be performed in this state.

Warning: Genlock Missing - Appears if you choose "Input" or "Ref In" for Genlock and you attempt to play a clip and no genlock is detected on the selected input.

Warning: Recording will end - Appears four minutes before the Record Minutes Max time is expired, and is a warning only.

Warning: Recording minutes max reached - Appears when the recording has been stopped because the time has expired. It clears the "Recording will end" alarm.

Warning: Recording failed - This alarm announces several failure conditions, each indicated by an error message within the alarm.

Warning: SMB Share Unsupported

Warning: SMB Share Too Slow - Underperformance when writing to SMB (recording) will cause that write to be terminated. Underperformance when reading from the SMB Share (playback) will result in AV sync issues which worsen over time.

Warning: SMB Share Not Mounted

Warning: SMB Share Destination Insecure - The SMB storage destination is connected to a remote file share using SMB Version 1.0, which is insecure and should not be used because it can expose network usernames and passwords to attackers. SMB version 2.0 or higher should be used instead in the Recording Profiles menu.

Warning: SMB Storage Low - SMB Share is 90% full - consider replacing media.

Warning: SMB Storage Full - SMB Share is 90% full - replace or format to continue.

Warning: SMB Share Failed to Mount - Check login credentials and connection settings.

Warning: SMB Share Write Protected - Cannot write to the mounted SMB Share. Check server settings or login credentials.

CONFIG and MEDIA Displays

In the CONFIG and MEDIA menus, the User Control Knob scrolls through various adjustable parameters, and pressing the knob activates menu field for scrolling through the choices (yellow outline indicates the field is active). When entering a menu, the system remembers and returns to the last selected parameter.

Figure 16. Example CONFIG Menu, Enable Channel

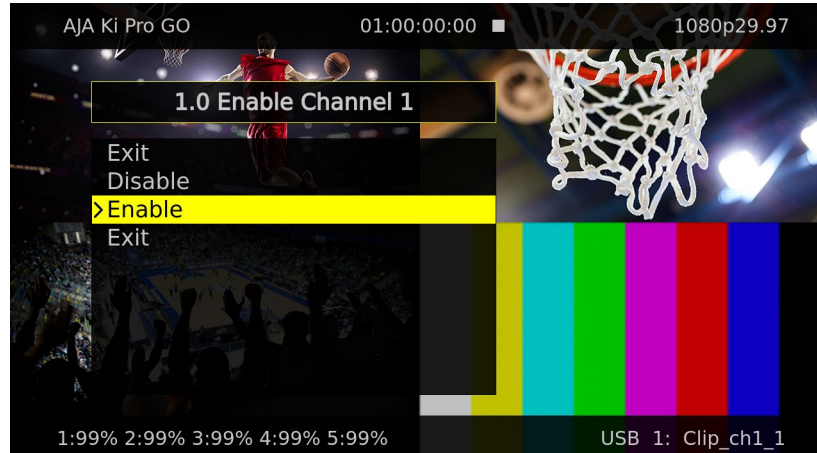
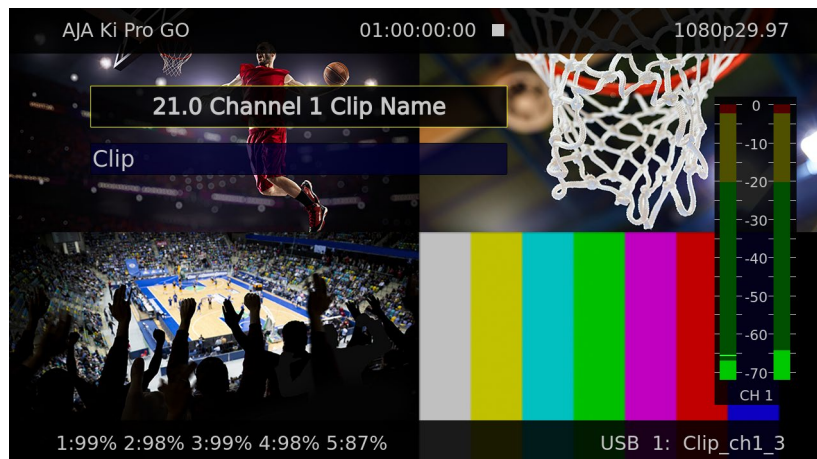


Figure 17. Example MEDIA Menu, Channel Clip Name



Basic Recording and Playback

Recording Clips With The Front Panel

NOTE: To help insure successful recording with Ki Pro GO it is good practice to use new, high-quality media that has been freshly formatted.

Routing Video and Audio Inputs

Any SDI or HDMI video input can be routed to any or all of the Ki Pro GO's recording channels. Factory default assignment is one-to-one SDI 1-4 inputs to Ki Pro GO recording channels 1-4 (USB ports 1-4).

1. If different video routing is desired, press the **CONFIG** button, scroll to each **Video Input** menu, and select the desired video input source for each channel (choose one from **SDI 1 -4**, **HDMI 1-4**).

2. If you wish to record audio from the Ki Pro GO's analog inputs instead of the audio embedded in video input selected above, scroll to the desired **Audio Input** menu, and select **Analog**.

Recording Clips

1. Route the desired input video and audio to your recording channels (see above).
2. Prepare your recording media:
 - A. For USB media, insert compatible pre-formatted USB media into the desired Ki Pro GO front panel USB ports.
 - B. For SMB, enter the parameters of a currently configured and available NAS (SMB Server and Share, SMB Network Record Path, SMB Dialect, Domain, Domain Username and Password).
3. Press the STATUS button. You can then scroll through the Status menus to see the current recording parameters.
4. The factory default setting enables recording to all four Ki Pro GO front panel USB ports. If you wish to record fewer channels, you can press CONFIG, go to the appropriate **Enable Channel** menus, and select **Disable** for the undesired channels.
5. You can adjust the recording quality level performed by each Ki Pro GO channel by pressing **MEDIA**, going to the appropriate **Channel Encode Quality** menus, and choose the quality level, ranging from **Low** to **High**.
6. When these Ki Pro GO settings are acceptable, simply push the red **RECORD** button below the display. If using USB media, the port LED indicators will blink indicating recording is in progress. The clip time will be updated on the UI display during record.
7. Press the **STOP** button to finish the recording. The clip will be stored on that media with a generated file name specified in the MEDIA menus.

See "[21.0 Channel 1 Clip Name](#)" on page 38 for information about clip naming.

Recording Backup Clips

A separate backup recording can also be created for each clip. This example uses USB Port 5, but backup recordings can be saved to any Ki Pro GO USB port or a configured NAS.

1. Insert compatible pre-formatted USB media into the rear panel Ki Pro GO USB port 5.
2. Before initiating the recording, press **MEDIA** and scroll to each desired **Channel # Backup Rec Dest** menu and select **USB Port 5**.
3. Perform the desired recording on your Ki Pro GO. Each clip recording will then also record a backup file onto the USB media mounted in port 5.

Backup recordings will have the same file name as its primary clip, with "_bak" appended to the name.

Media Recording Capacity

NOTE: When selecting your USB 5 backup media, please check the Ki Pro GO: Approved Media List Document found here: <https://www.aja.com/products/ki-pro-go#support>.

Ki Pro GO alerts you when the media is nearly full with a “Media Low” prompt at 10% of the remaining capacity. At 1% of the total capacity of the media, the “Media Full” prompt will appear. Recording will continue, however, until the media is completely filled.

To re-enable recording onto completely filled media, use a computer or other external device to delete clips from the media, or completely reformat it (which erases all the data on that media).

Playing a Clip With the Front Panel

Ki Pro GO supports the playback of one clip at a time. Video for that clip is sent simultaneously to all four SDI BNC output connectors (even disabled channels), and also to the SDI monitor output and to the HDMI monitor output.

Select, Cue and Play a Clip

1. Press the **STOP** button if a clip is playing.
2. Press **MEDIA**, scroll to the **Playback Media Source** menu and select the USB port (USB 1, 2, 3, 4, or 5) mounted with media that contains the desired clip.
3. Turn the User Control Knob until you find the desired clip on that media. The selected clip file name is shown on the bottom right of the menu.
4. Use the Ki Pro GO's front panel transport controls to cue the clip to its desired start point.
5. Press the **PLAY** transport button. The clip will play from its cued location.

When playing back a clip, the first push of **STOP** pauses the clip. The current location of the clip is displayed on the Ki Pro GO's outputs, and the **STOP** button will flash. A second push of **STOP** completely stops the playback.

Clip or All Playback

You can control whether a single clip or all clips on the currently selected media will be played with a single press of the **PLAY** transport button. Multiple clips play back in the order that they reside on the media.

1. Select and cue the desired clip (see above).
2. Press **MEDIA**, scroll to the **Playback Type** menu, and set the desired playback type.
 - **Clip** - Will play only the selected clip (stopping or looping at its end point depending on the setting for Loop Playback). When done, the playing clip is paused, and a still image of the last frame will be output.
 - **All** - Plays the selected clip, and then cues and plays following clips on that media in sequence (stopping or looping depending on the setting for Loop Playback). When done, the last playing clip is paused, and a still image of the last frame will be output.

NOTE: Ki Pro GO attempts to make the transitions between multiple clip playback as clean as possible, but some momentary distortion may occur depending on the types of clips being played.

3. Press the **PLAY** button. The clip(s) will play as specified.
4. When playing back a clip (PLAY, FFWD, or REV) the first push of STOP enables a “Pause” mode. Playback is paused, the current frame of the clip is displayed, and the STOP button flashes. A second push of STOP completely stops the playback.

The Playback Type setting remains in force until it is changed in the MEDIA menu.

Loop Playback

You can control whether a clip or series of clips are played once, or are played back repeatedly.

1. Select and cue the desired clip.
 2. Press **MEDIA**, scroll to the **Loop Playback** menu and set the desired manner of playback.
 - **On** - Will play the selected clip to the end and repeat its playback from the beginning.
 - If **Clip** is selected above, only that individual clip will play repeatedly until stopped by the user.
 - If **All** is selected above, that clip and all the following clips will play in turn, and then repeat playback again in that sequence from the first clip played until stopped by the user.
 - **Off** - Plays the selected clip, or all clips on that media, once through and then stops. When done, the last playing clip is paused, and a still image of the last frame will be output.
 3. Press the **PLAY** button. The clip(s) will play as specified.
- The Loop Playback setting remains in force until it is changed in the MEDIA menu.

CONFIG Menus

The CONFIG menus provides controls that allow configuring various aspects of how Ki Pro GO operates.

CONFIG Menu Parameters

1.0 Enable Channel 1

Enables Channel 1 for clip recording and/or playback. When disabled that channel cannot not be used.

Enable (default) Disable	Channel 1 is enabled. Channel 1 is disabled.
-----------------------------	---

1.1 Video Input 1

Selects which SDI or HDMI video input will be routed to Ki Pro GO Channel 1.

SDI 1 (default is Ch#) SDI 2 SDI 3 SDI 4 HDMI 1 HDMI 2 HDMI 3 HDMI 4	Selects SDI 1 input video. Selects SDI 2 input video. Selects SDI 3 input video. Selects SDI 4 input video. Selects HDMI 1 input video. Selects HDMI 2 input video. Selects HDMI 3 input video. Selects HDMI 4 input video.
---	--

1.2 Audio Input 1

Selects the audio input for Channel 1. You can select the first two channels of embedded audio from the incoming video signal, or the Ki Pro GO's XLR Analog Input connectors.

Follows Video (default) Analog	Selects embedded audio from the incoming video signal. Selects analog audio input
-----------------------------------	--

2.0 - 4.2 Channel 2, 3, and 4 Input Settings

Same settings above for Ki Pro GO Channels 2, 3, and 4.

- 2.0 - 2.2 = Channel 2 menu numbers
- 3.0 - 3.2 = Channel 3 menu numbers
- 4.0 - 4.2 = Channel 4 menu numbers

5.0 Loss of Video

Controls Ki Pro GO behavior if the video routed to a channel is lost during recording. This setting affects all four channels. Video loss will be detected and an alarm message will be posted indicating that input video has been lost on specific channels.

Record Last Frame (default) Record Black.	The last good video frame is passed through the codec and continues to be recorded as a still image. Black will be recorded if video is lost.
--	--

6.0 SDI Monitor Channel

Controls which channels are displayed on the SDI Monitor output.

Channel 1 Channel 2 Channel 3 Channel 4 All Channels (default)	Display only Channel 1. Display only Channel 2. Display only Channel 3. Display only Channel 4. Display all four channels in quadrants.
--	---

6.1 HDMI Monitor Channel

Controls which channels are displayed by the HDMI Monitor output. Select from the same settings listed above.

6.2 Headphone Audio

Selects which channel's audio is routed to the headphone output. This setting also affects the rear RCA audio monitor jacks and the front panel VU meters.

Select from:

- Channel 1 (default), 2, 3, or 4

6.3 Super Out

This parameter provides an overlay of timecode and transport state (Record, Pause, etc.), audio meters and storage status onto the SDI monitor output. Note that Super Out applies only to the SDI and/or HDMI monitor outputs, not the 4x 3G-SDI or HDMI outputs. These other outputs are always "clean".

Off (default) SDI Monitor HDMI Monitor SDI/HDMI Monitor	Superimposition is disabled Superimposition is enabled for SDI Monitor output Superimposition is enabled for HDMI Monitor output Superimposition is enabled for SDI and HDMI Monitor output
--	--

6.4 Screen Overlay Opacity

This parameter adjusts the opacity of the Super Out and front panel Overlay displays.

- 100%
- 75% (default)
- 50%
- 25%

6.5 Time Code Size

This parameter adjusts the size of the Super Out time code displayed. Choose from:

- Normal TC Size (default)
- Large TC Size

7.0 3G SDI Level

This parameter allows the 3G SDI output to be configured for either Level A or Level B. While many 3G SDI devices will support both Level A and Level B, some devices may need a specific 3G SDI selection to operate as expected.

Level B (default) Level A	For use with devices that accept or require Level B. For use with devices that accept or require Level A.
------------------------------	--

7.1 HDMI/EDID Override

This parameter determines whether the HDMI Output is auto-negotiated with the receiving device via EDID (extended display identification data) or via a specified output type.

Auto (default) YCbCr RGB	The HDMI output is negotiated automatically with the receiving device via EDID. Configures the HDMI output for 10-bit YCbCr 422 Configures the HDMI output for 8-bit RGB
--------------------------------	--

NOTE: Typically, you will want to simply leave the selection configured for Auto so that the negotiation between the devices is handled automatically.

7.2 Inter/PsF Override

This parameter defines the frame recording method.

Auto (default)	Automatically selects the method, depending on input format. Incoming video with frame rates of 23/24 are assumed to be PsF, and 25/29/30 sources are assumed to be interlaced, and each is converted accordingly.
PsF	All 'interlaced' sources are assumed to actually be PsF and will be converted accordingly.
Interlaced	All 'interlaced' sources are assumed to actually be interlaced and will be converted accordingly.

7.3 Progressive Playback

This parameter defines the format applied when progressive media is played from storage.

Progressive (default)	Playback as standard progressive frame.
Interlaced	Playback as interlaced.

7.4 Genlock Source

This parameter selects the source of reference to genlock to during idle, record and playback.

For general monitoring purposes, genlock is not required.

Freerun	Ki Pro GO syncs to its own timebase and is not locked to an external source.
Ref In	Use the Ref Input as the Genlock source.
Channel 1 (default)	Use the Channel 1 input as the Genlock source.
Channel 2	Use the Channel 2 input as the Genlock source.
Channel 3	Use the Channel 3 input as the Genlock source.
Channel 4	Use the Channel 4 input as the Genlock source.

7.5 Analog Audio

This parameter configures the analog audio signal levels for input and output.

+24dBu (default)	Selects pro-level USA signal levels of +24dBu
+18dBu	Selects pro-level Europe signal levels of +18dBu
+15dBu	Selects pro-level German signal levels of +15dBu
+12dBu	Selects consumer signal levels of +12dBu
	NOTE: Maximum amplitude (0 dBFS)

Professional audio equipment has much higher levels than consumer equipment: a 0 VU reading corresponds to +4 dBu. Connecting a professional +4 dBu device to a consumer audio input -10dBV (-7.8 dBu) may cause overloading, whereas the output of a consumer device probably does not have sufficient power to drive a professional audio input. With consumer and semi-professional audio equipment, a VU reading of 0 dB is typically referenced to -10 dBV. 0 dBu = 0.775 VRMS.

These settings are valid with the panel Mic/Line switch set to "Line." (The Mic settings are lower input level settings for use with condenser and dynamic microphones—use Mic +48 for powered condenser mics and Mic for dynamic microphones.)

About Ki Pro GO Timecode

Ki Pro GO always records timecode onto clips. The timecode can originate from an incoming SDI video's RP188 data, it can be recorded as the time of day, or it can be specified to start at a specific hour.

Ki Pro GO also plays video with timecode. If no timecode is present in a clip (it was recorded by another device), the clip playback timecode begins at 00:00:00:00, and these timecode values are also embedded as RP188 data on Ki Pro GO's SDI outputs.

Drop-frame (DF) timecode was created to match time of day with fractional frame rate video (i.e. 29.97, 59.94), by dropping selected timecode numbers. Two timecode frame numbers are dropped every minute, on the minute, except every tenth minute. Note that actual video frames are not lost. Instead some of the timecode numbers assigned to video frames are skipped. Non-drop-frame (NDF) video gives each frame sequentially ascending timecode numbers without gaps.

For time of day timecode, Ki Pro GO detects frame rates and automatically selects NDF for even frame rate video, or DF for fractional frame rate video. For RP-188 embedded timecode, Ki Pro GO detects the embedded DF/NDF flag and uses it regardless of the frame rate or system setting.

8.0 Timecode In

Selects the source of the timecode to be recorded onto clips.

Timecode Value (default)	Timecode will be determined by the Timecode Value and Timecode Value Type parameters described below.
Time of Day	Uses the Ki Pro GO's time setting (Date/Time parameter) for timecode. Drop frame depends on the incoming video. For example, a 25 fps input is written as NDF, and a 29.97 input is written as DF.
Channel 1	Uses that channel's incoming video RP188 timecode, if present. If RP188 is not present, the Timecode Value and Timecode Value Type parameters below will determine the recorded timecode.
Channel 2	
Channel 3	
Channel 4	
LTC on Audio In	Uses incoming LTC timecode present on the audio input (R). For this use the level selector switch should be set to Line.

8.1 Timecode Value

When the Timecode In parameter is set to Timecode Value, the timecode of recorded clips will begin at the specified hour. Select from:

- 00:00:00:00 (default) to 23:00:00:00

This setting will also be used for timecode if incoming RP188 data is not present on the selected source.

8.2 Timecode Value Type

When the Timecode In parameter is set to Timecode Value, this parameter specifies recording either Non Drop Frame or Drop Frame timecode.

NDF (default)	Non-drop-frame timecode video will be recorded.
DF	Drop-frame timecode video will be recorded.

This setting will also be used for timecode if incoming RP188 data is not present on the selected source.

9.0 IP Address Type

This parameter determines the type of TCP/IP network configuration used by Ki Pro GO.

DHCP (default)	Select automatic IP address assignment from a DHCP server. If DHCP fails the Ki Pro GO be given a 169.254.<random>.<random> IP address.
Static Addr	Assign a static IP address manually. The default static IP address is 10.65.76.65.

9.1 IP Address

This parameter determines the static IP address used by Ki Pro GO for TCP/IP networking.

NOTE: IP addresses consist of "octets" separated by a period (i.e., 10.0.181.0). To edit these, press the User Control Knob to access the alpha-numeric keyboard to enter the desired IP Address. When complete click the Save function.

9.2 Subnet Mask

This parameter determines the subnet mask used by Ki Pro GO for TCP/IP networking.

9.3 Default Gateway

This parameter determines the gateway or router used by Ki Pro GO on your LAN for TCP/IP networking.

9.4 System Name

This parameter defines a name for Ki Pro GO and gives it a unique identifier. This same name is used both when displaying systems via the web interface. The default name is "AJA Ki Pro GO".

9.5 MAC Address

This parameter is a read-only field showing the MAC address of the Ki Pro GO's Ethernet adapter.

10.0 Date/Time

This parameter manually sets the calendar date of the internal Ki Pro GO clock. The value is defined as month/day/year/hour/minute.

Variable	Using the User Control Knob, enter a calendar date for Ki Pro GO. Scroll and click the for each element (M/D/Y/HR/D). When finished, the scroll to SAVE and press the knob.
----------	---

10.1 Time Zone

This parameter manually selects the time zone for the internal Ki Pro GO clock.

Table 1. Ki Pro GO Time Zones

GRASS VALLEY (default)	AZORES	KUWAIT	BEIJING
LOS ANGELES	LISBON	JEDDA	MANILA

DENVER	LONDON (GMT)	MOSCOW	TAIPEI
MEXICO CITY	MADRID	TEHRAN	SEOUL
DALLAS	PARIS	ABU DHABI	TOKYO
CHICAGO	AMSTERDAM	KABUL	GUAM
DETROIT	ROME	NEW DELHI	SYDNEY
WASH DC	BERLIN	COLOMBO	AUCKLAND
NEW YORK	VIENNA	DHAKA	HONOLULU
MONTREAL	ATHENS	BANGKOK	ANCHORAGE
BOSTON	HELSINKI	HANOI	SEATTLE
CARACAS	CAIRO	SINGAPORE	
BUENOS AIRES	TEL AVIV	JAKARTA	
RIO DE JANEIRO	BEIRUT	HONG KONG	

10.2 Daylight Savings

This parameter can be used to manually set the internal Ki Pro GO clock for Daylight Savings Time by adding one hour to the current time.

On (default) Off	Adds one hour to the current time value. No increment is applied.
---------------------	--

10.3 FUNC Button

The FUNC button on the Ki Pro GO front panel is intended to be used as a quick access shortcut to menu locations. For the initial release only one choice is included, either directly display the Playback Media Source menu, or disable the button.

Disabled Playback Media Source (default)	No action when FUNC button is pressed. Displays the Playback Media Source menu, allowing quick selection of clips on different media.
--	--

10.4 Screen Dimmer

This parameter lets you choose when the front panel menu display will be automatically dimmed. Scroll the User Control Knob to enter a time value in minutes. Range is 1 - 60.

10.5 Screen Brightness

This parameter determines the brightness of the alphanumeric LCD display and front panel back-lit buttons.

Variable (default is 6)	Push the User Control Knob to enter the intensity scale. Then scroll to dim or brighten in steps from 1 (dim) to 8 (bright). Push the knob to exit.
----------------------------	---

11.0 Serial Number

This parameter displays this Ki Pro GO's unique serial number (Read-only).

11.1 Software Version

This parameter displays this Ki Pro GO's software version level (Read-only).

12.0 Recall Preset

This parameter recalls the Ki Pro GO settings of a previously saved preset. Push the User Control Knob to enter the Preset Recall scale and scroll to choose the Preset (1 to 20). Press the knob to select and confirm action by scrolling and clicking on OK or Cancel.

12.1 Store Preset

This parameter saves a preset configuration to the selected storage register. Use the User Control Knob to scroll to the number of the Preset register. To store, press the knob, and then select and press OK. The message "Complete" is displayed after a successful store.

99.0 Factory Reset

Selecting this parameter and then pressing the User Control Knob brings up the Confirm Action screen. Press on OK to recall Ki Pro GO' factory default settings.



Caution! *Selecting this parameter and recalling factory defaults overwrites the current settings.*

Recalling factory defaults does not affect these settings:

IP Address	MAC Address	Recall Preset
Subnet Mask	Date/Time	Store Preset
Static Gateway	Serial Number	
System Name	SW Version	

MEDIA Menus

The MEDIA menu parameters affect media storage and the type of encoding to be used. Menus are also available for naming and numbering clips.

MEDIA Menu Parameters

About Clip Names

Ki Pro GO automatically creates a unique file name for each recorded clip. The file name can have the following components, separated by underscore characters:

<Clip Name>_<Ch #>_<Clip #>_<Segment #>_<Backup>(Overwrite).mp4

<Clip Name> is the first file name component. Default for this is "Clip". This component of the file name can be customized for each Ki Pro GO recording channel using that channel's Clip Name parameter.

<Ch #> identifies the Ki Pro GO recording channel, as either ch1, ch2, ch3, or ch4.

<Clip #> is a four digit clip number included in the file names of all clips recorded at the same time by any Ki Pro GO recording channel. This number increments each time a recording completes. Default starting value is 0001, it increments to 9999 and then rolls back to 0001. You can define a new starting clip number using the Ki Pro GO's Clip Number parameter.

<Segment #> identifies each segment of a continuous recording. Each time a Record Minutes (max) recording duration is reached, Ki Pro GO begins recording a new segment and increments the segment number of that new clip's file name. Starting value is 0001 for the first recorded segment, it increments with each new segment up to 9999, and then rolls back to 0001.

<Backup> is an optional component only used to identify backup recordings. Backup recordings will have "_bak" appended to their file names.

(Overwrite) is another optional identifier used to prevent accidentally overwriting clips with the same file name. Ascending (1), (2), etc. numbers in parentheses are added to the file names of clips that would otherwise have overwritten previously recorded clips of the same name.

Table 2. Clip File Naming Examples

Clip_ch1_0001_0001.mp4	Default Clip Name, Recording Channel 1, first recorded clip, first recorded segment of that clip, not a backup, and not a multi-segment recording.
StageLeft_ch1_0025_0001.mp4 StageRight_ch2_0025_0001.mp4 CenterHall_ch3_0025_0001.mp4 BackStage_ch4_0025_0001.mp4	Four custom named clips recorded simultaneously, Clip Number was set to 25.
StageLeft_ch1_0026_0001.mp4 StageRight_ch2_0026_0001.mp4 CenterHall_ch3_0026_0001.mp4 BackStage_ch4_0026_0001.mp4	Subsequent recordings using the same setup above, incrementing the clip number for each new clip.
StageLeft_ch1_0027_0001.mp4 StageLeft_ch1_0027_0001_bak.mp4	Primary and backup recordings of the same material.
StageRight_ch2_0028_0001.mp4 StageRight_ch2_0028_0002.mp4 StageRight_ch2_0028_0003.mp4	Three clips from a segmented recording.
CenterHall_ch3_0029_0001.mp4 CenterHall_ch3_0029_0001(1).mp4 CenterHall_ch3_0029_0001(2).mp4	File names of clips recorded if that clip name already exists.

21.0 Channel 1 Clip Name

This parameter determines the first component of the clip name generated by Ki Pro GO's recording Channel 1. The default name is "Clip". You can enter up to 20 ASCII characters, except those in [Table 3](#) are prohibited:

Table 3. Prohibited Clip Name Characters

<	less than	\	backslash	_	underscore
>	greater than		vertical bar or pipe	%	percent
:	colon	?	question mark	(opening parenthesis
"	double quote	*	asterisk)	closing parenthesis
/	forward slash	.	period	+	plus sign

21.1 Channel 1 Encode Quality

This parameter sets that channel's recorded clip encode quality. The resulting bitrates are adjusted to match the video format and frame rate for each quality setting.

Low Med-Low Medium (default) Med-High High	Selects the indicated encode quality level.
--	---

NOTE: For more detailed information about bitrates, please see: "[Ki Pro GO Encoding Parameters](#)" on page 59.

21.2 Channel 1 Encode Bit Depth

Sets the color depth sampling. Select from:

- 8-bit (default)
- 10-bit

NOTE: For better file interoperability with 3rd party applications, it is recommended to keep this setting at 8-bit.

21.3 Channel 1 Encode Sampling

Sets the color encoding. Select from:

- 4:2:0 (default)
- 4:2:2

NOTE: For better file interoperability with 3rd party applications, it is recommended to keep this setting at 4:2:0.

22.0 Channel 1 Primary Rec Dest

Selects which USB port will be used for this channel's primary recorded clips. Select from:

USB Port 1 USB Port 2 USB Port 3 USB Port 4 USB Port 5 SMB	Choose the desired USB Port 1-5 or SMB. By default, each Ki Pro GO recording channel uses the USB port number matching that channel's number. Selects an SMB SHARE (NAS).
---	---

22.1 Channel 1 Backup Rec Dest

Enables the recording of backup clips encoded by this channel. The backup clip's content will be identical to the primary clip, and "_bak" will be appended to the backup clip's file name. Select from:

None (default) USB Port 1 USB Port 2 USB Port 3 USB Port 4 USB Port 5 SMB	No backup recording will be performed for this channel. Choose the desired USB Port 1-5 or SMB for backup recording.
---	---

23.0 - 28.1 Channel 2, 3, and 4 Encode Settings

Parameters for Clip Name, Encode Quality, and Backup Rec Dest are available for the other three Ki Pro GO recording channels.

- 23.0 - 24.1 = Channel 2 menu numbers
- 25.0 - 26.1 = Channel 3 menu numbers
- 27.0 - 28.1 = Channel 4 menu numbers

29.0 Record Minutes (max)

This parameter specifies the maximum record length of clips. The range is 5 minutes to 240 minutes (4 hrs).

5 to 240 (default = 240)	Press Control Knob and scroll up or down to change the Record Minutes (max) value.
-----------------------------	--

If the max time is reached, Ki Pro GO automatically completes recording that clip, immediately creates a new segmented clip, and continues recording new segmented clips indefinitely. Each new recorded clip will have its file name segment number incremented by one.

NOTE: The FAT32 file system has a 4GB file size limit. If a recorded clip exceeds that size, Ki Pro GO will automatically create a new segment, same as when the Record Minutes (max) limit is reached.

31.0 Clip Number

This parameter determines the clip number, from 1 to 9999, that follows the Clip Name, and is associated with all clips generated while using this setting. This number is incremented automatically when new clips are recorded, and resets to 1 after reaching 9999.

1 to 9999 (default = 1)	Press Control Knob and scroll up or down to change the Clip Number value from 1 to 9999.
----------------------------	--

32.0 - 32.4 USB Port 1-5 Media Path

Opens a text editing window that lets you create a directory structure on the media into which clips will be saved. Up to 15 characters can be entered, with the period or dot (.) character prohibited.

32.5 SMB Server and Share

If using an SMB Server for recording, enter the SMB Server IP address and share name, separated by a "/" (forward slash).

You can enter a Server Name or an IP address. Enter the Server Name in situations where the Ki Pro GO is on a network with a DNS server. For all other configurations, enter an IP address, such as "10.0.0.99".

NOTE: If an SMB Server is not mounted, this and some of the following related menus will not display information.

32.6 SMB Network Record Path

If using an SMB Server for recording, enter the SMB directory structure into which clips will be saved. Up to 15 characters can be entered, with the period or dot (.) character prohibited.

SMB and Record Paths

If the recording directory is not present, Ki Pro GO will create one. For SMB, this means Ki Pro GO **must** have write permission at the "bottom" of the SMB Server and Share. If the top-level share is Read-Only and the desired subdirectory is Read/Write, and if the subdirectory is entered as the SMB Network Record Path instead of as part of the SMB Server and Share, recording will fail.

For example, in a scenario in which there is a top-level READ-ONLY SMB Share on the network of //ServerName/AVDepartment, and it contains a Read/Write folder called "MyProject" where clips are to go, the following will work successfully:

SMB Server and Share: //ServerName/AVDepartment/MyProject

SMB Network Record Path: - Empty -

In contrast, the following will **not** work because the SMB server is read-only:

SMB Server and Share: //ServerName/AVDepartment

SMB Network Record Path: MyProject

Ki Pro GO needs the SMB share mount point to be Read/Write so that it can create record paths if they do not exist already, since the user can change this parameter at any time.

32.7 SMB Dialect

Use the SMB Dialect control to select a specific version of the Server Message Block (SMB) protocol to use with a remote SMB share. Start with Auto unless you experience long connection delays (two minutes or more), or if you must connect to a server that only supports SMB1 (also called CIFS or SMB with no version number), such as macOS X 10.8 Mountain Lion or earlier.

Auto (default) is recommended for most applications. When Auto is selected, Ki Pro GO will start with the most secure setting (SMB 3.1.1), and work its way sequentially through the list until a compatible setting is found. SMB 2.0 is the lowest version the Auto setting will negotiate to. Generally, the higher the number, the higher the security.

WARNING: CIFS (Common Internet File System) SMB 1.0 is not secure and should be avoided if at all possible. Use of CIFS/SMB1 may expose sensitive user credentials to anyone listening on your network.

If using an SMB Server for recording, select the SMB dialect. Choose from:

- Auto, SMB 3.1.1, 3.0.2, 3.0, 2.1, 2.0, or 1.0.

32.8 Domain

If using an SMB Server for recording, enter the Windows domain, or clear the field for none. If an SMB Server is not mounted, this menu will not display information.

32.9 Domain Username

If using an SMB Server for recording, enter the user name, or clear the field for none. If an SMB Server is not mounted, this menu will not display information.

32.10 Domain Password

If using an SMB Server for recording, enter the password, or clear the field for none. This field will never display information, for security purposes. You will only see the password as you enter it with the knob.

34.0 Playback Media Source

Selects which USB media will be used for clip playback. Only one clip can be played back at a time. Select from:

- USB Port 1 (default), USB Port 2, USB Port 3, USB Port 4, USB Port 5, or SMB.

IMPORTANT: If an SMB share is too slow for a particular playback source, or if the network is too congested during playback, the AV sync for that source can begin to slip.

34.1 Playback Type

This parameter determines behavior during playback. Ki Pro GO will play all clips regardless of format or frame rate.

All (default) Clip	Plays the current clip and then continues playing the next clip on that Ki Pro GO media. Plays one clip and then stops playback.
-----------------------	---

NOTE: If all clips are the same format and frame rate, they should play out smoothly one after another. If the formats or frame rates are different, the video may reset between clips.

34.2 Loop Playback

This parameter turns looped playback on and off.

On (default) Off	Play clip(s) and then loop back and repeat playback. Play clip(s) and then stop playback when complete.
---------------------	--

About Formatting USB Media

Ki Pro GO requires the use of formatted media. Ki Pro GO the following file systems:

- exFAT (default format)
- FAT32
- FAT16

Newly purchased USB media is usually pre-formatted by the manufacturer before shipment.

Ki Pro GO can format USB media, but only as exFAT. If formatted media of a different type is reformatted using Ki Pro GO, the existing formatting will be lost along with any data, and will be formatted as exFAT.

NOTE: AJA recommends using and/or formatting to exFAT for best results due to file size constraints of FAT32 and FAT16.

35.1 - 35.5 Format USB Port 1-5 Media

Formats the media currently located in the selected USB port.

1. Press the front panel knob in to display a Confirm prompt.
2. Turn the knob to select OK.
3. Press the front panel knob a second time to initiate the formatting.

Prompts will be displayed indicating the formatting progress.

35.6 Format All USB Media

Formats all media currently installed into the Ki Pro GO's USB ports, with the procedure above.

Chapter 5 – Browser Remote Control

Overview

An optimized web server running on Ki Pro GO allows you to remotely play and record clips, and monitor and adjust parameter settings via a web browser client running on a connected computer. Preferred web browsers for Ki Pro GO are:

Mac OS

- Chrome
- Safari
- Firefox

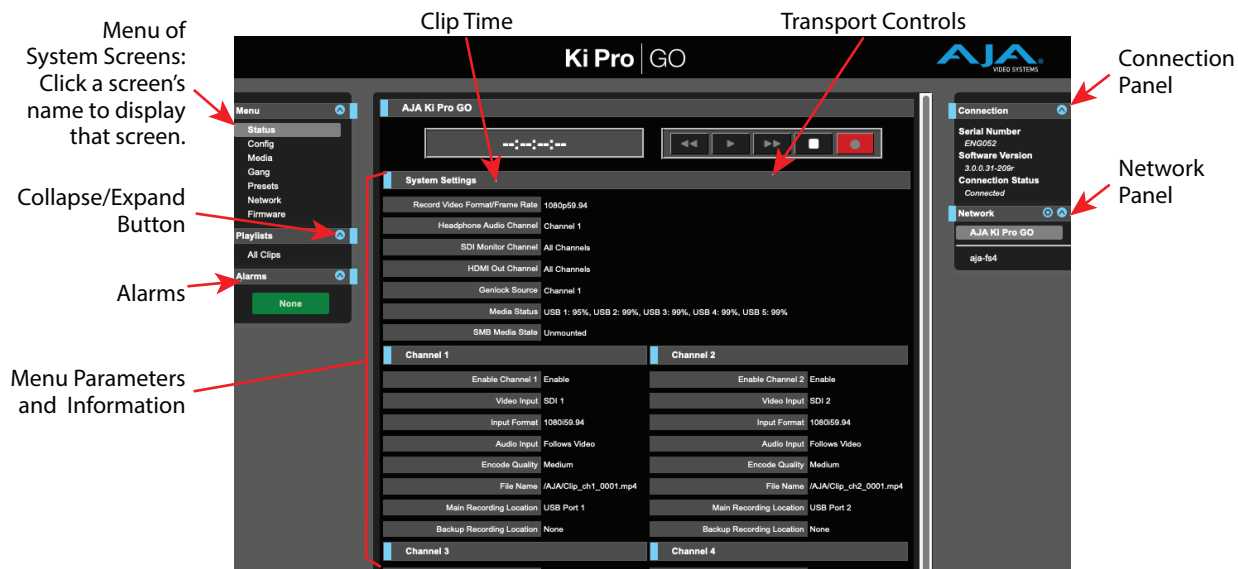
Windows OS

- Chrome
- Firefox

NOTE: Other web browsers may work, but AJA cannot guarantee consistent operation for all web browsers or web browser versions. If you do experience an unexpected behavior when using a particular web browser or web browser version to interact with Ki Pro GO, consider using an alternate web browser and report any issues experienced to AJA Technical Support.

Ki Pro GO Web UI Description

Figure 18. Ki Pro GO Web UI Status Screen Example



All Ki Pro GO web UI screens have certain areas in common.

- At the top of each screen are transport controls, including a red RECORD button. These Web UI transport buttons are linked to the hardware transport buttons located on the Ki Pro GO's front panel.
- A display on the left reports the record or playback time for the current clip.

- On the left of each screen is a Menu panel listing the available Ki Pro GO web UI screens. Click any of these items to jump to that screen.
- The Alarms pane below reports Ki Pro GO alarm conditions.
- On the right side of each screen is a Connection panel. This area shows the connection status and Ki Pro GO's serial number and software version. This latter information is useful if you call AJA for technical support.
- Below the Connection panel, the Network panel shows AJA devices on the network, and allows you to switch your connection to a different device by clicking on that device's name.
- In the middle of each screen are the menu parameter choices and information pertaining to that screen.

The blue circled arrow icons can be clicked to toggle a pane open or closed.

Standard scroll bars on the right and bottom allow screen navigation, and are hidden when the entire screen's height or width is displayed.

Hovering your mouse cursor over a parameter name brings up a tooltip describing that parameter.

Right clicking on a parameter name lets you reset that value to the factory default.

Ki Pro GO Web UI Screens

Ki Pro GO Web UI screens closely mirror the parameter menus displayed on its front panel, with some variations.

Status Screen

Figure 19. Status Screen, with SMB Mounted

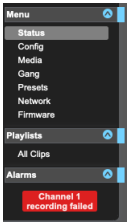


The Status screen displays the current configuration state of the Ki Pro GO. When an SMB volume is mounted, its status is displayed along with additional SMB parameter information. When Unmounted, these parameters are hidden on this screen.

The information displayed is the same Chnl/Input and File/Encode status information as shown on that Ki Pro GO's front panel Status menu, except alarms are not displayed.

On the Ki Pro GO Web UI you can see alarm messages at any time from any screen by opening the Alarms pane on the left.

Figure 20. Alarms Pane



Config Screen

Figure 21. Ki Pro GO Config Screen (scrolled up)

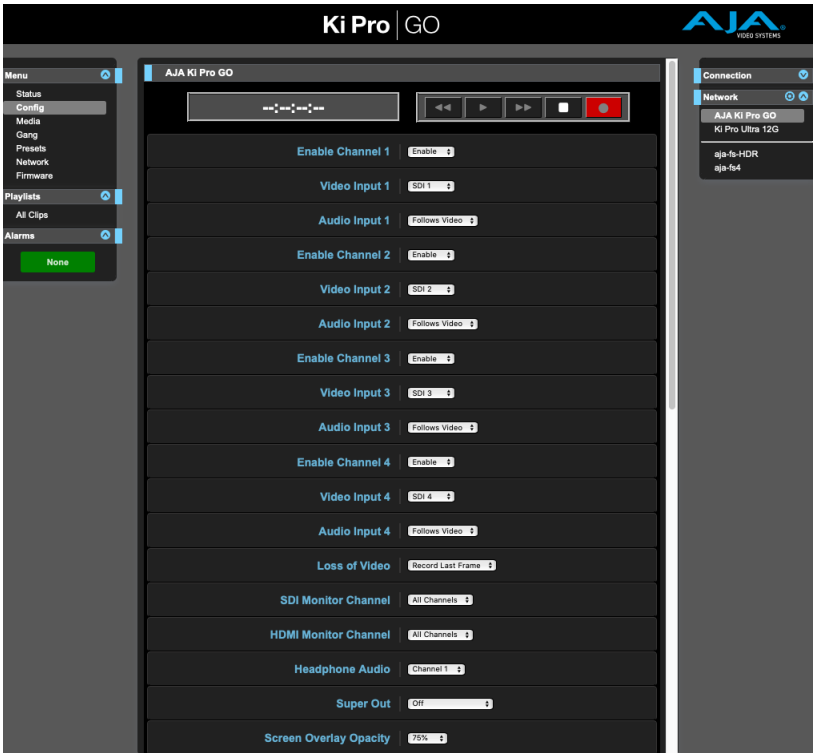
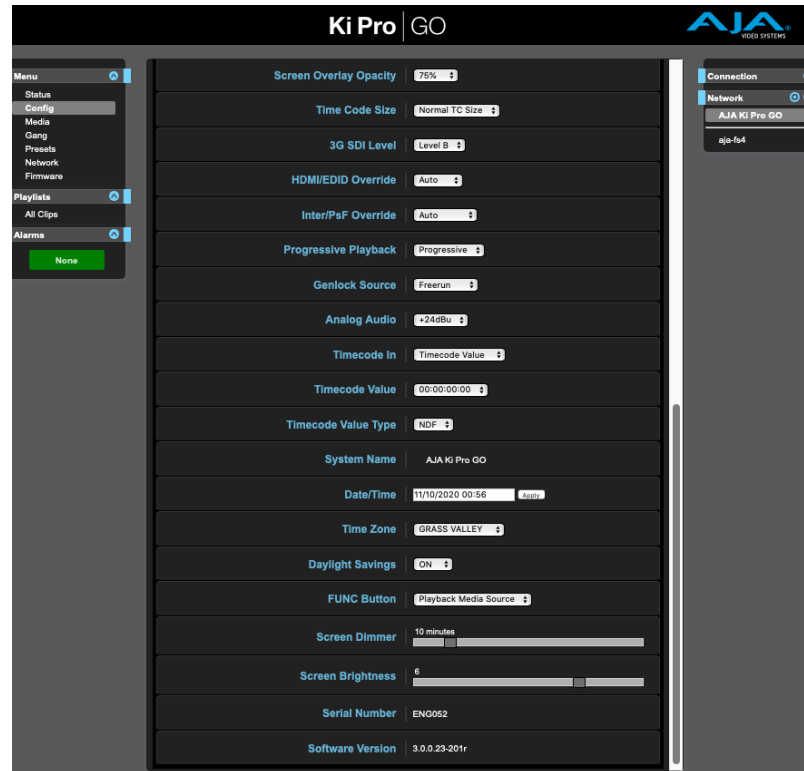


Figure 22. Ki Pro GO Config Screen (scrolled down)



The Config screen provides access to the Config menu parameters (see ["CONFIG Menu Parameters" on page 30](#)), except Network configuration settings are available on the Web UI Network panel (see ["Network Panel" on page 52](#)).

Media Screen

Figure 23. Ki Pro GO Media Screen (scrolled up)

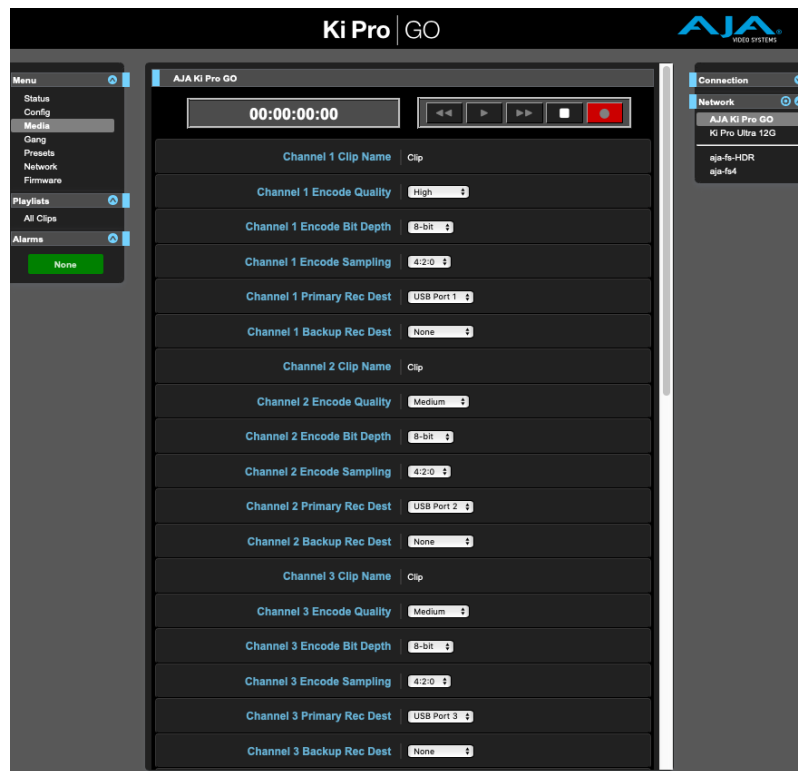
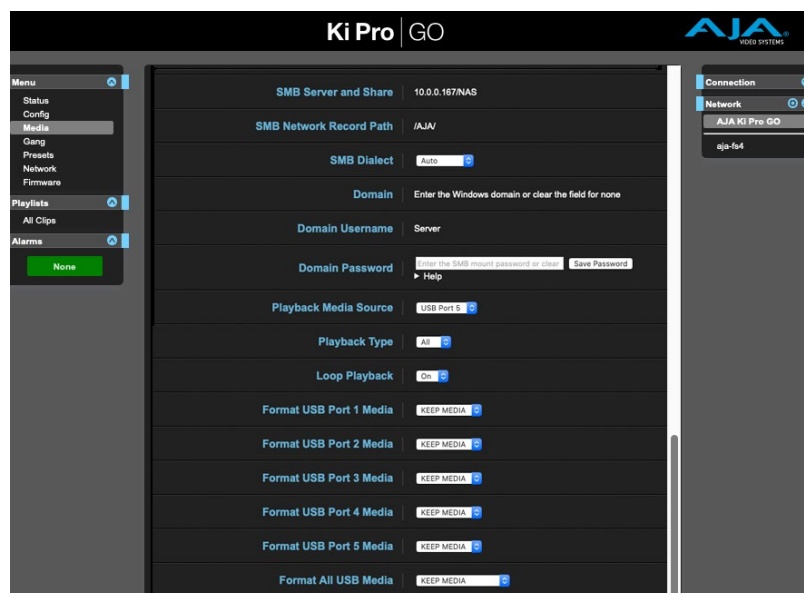


Figure 24. Ki Pro GO Media Screen (scrolled down)



Figure 25. Ki Pro GO Media Screen (scrolled further down)



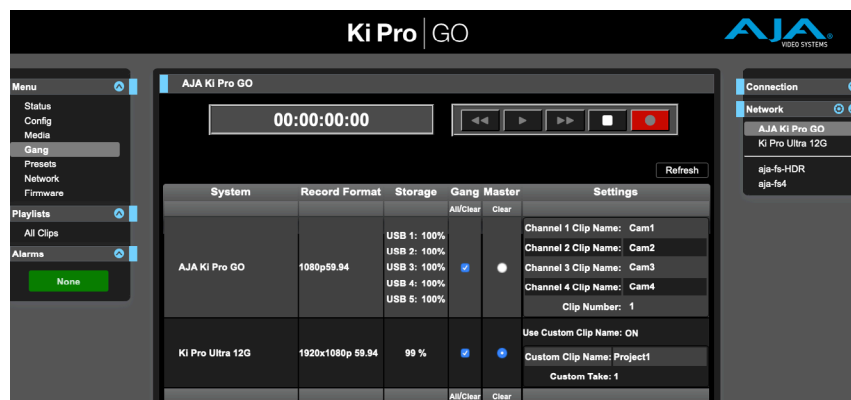
SMB Parameter Editing

To clear an SMB parameter, right click on the blue text (the name of the parameter), and select "reset to factory".

Gang Screen

At-a-glance you can see all of the Ki Pro systems that are present on the same local LAN in the Connection section of the web UI. Their system names are shown in the Network panel on the right side of the screen.

Figure 26. Gang Recording Screen



Click a system name to switch the browser to that particular Ki Pro system.

NOTE: You must have a properly configured default gateway to see the AJA devices. If the Default Gateway is not configured properly, other AJA devices will not be listed.

Multiple Ki Pro units can be used in unison to produce recordings via the Gang Control feature. This feature is only available via the web UI when the units have IP addresses configured under a common network and subnet mask and are connected via their LAN connections to an Ethernet switch or hub to a host computer. AJA recommends that all Ki Pro units in a gang use the same firmware version.

AJA devices supporting Gang recording are:

- Ki Pro GO (v2.0 or later)
- Ki Pro Ultra Plus (v5.1 or later)
- Ki Pro Ultra 12G

Gang Recording Example

You have a Ki Pro “Master” a Ki Pro “Slave” both attached on a network where their static IP addresses are 192.168.0.2 and 192.168.0.3, both with a subnet mask value of 255.255.255.0. They are connected to a host computer with IP address 192.168.0.1 and subnet mask 255.255.255.0. The host computer uses a web browser, like Apple’s Safari, to access the “Master” Ki Pro by entering 192.168.0.2 in the URL field of the browser. The Ki Pro “Master” unit web UI should appear. Locate the Gang Controls area in the user interface.

Parameters for each available Ki Pro will appear in the Gang Controls area. These include:

- System – displays units that may be added to a gang
- Record Format – type of video format/frame rate each system is configured to record
- Free Storage – at-a-glance view of the available capacity of the media in each unit
- Gang – units can be added or removed from the gang
- Master – allows the promotion of a Ki Pro unit to the controlling role
- Settings – allows for the configuration of clip names on the Master and Slave Ki Pro units

To add a Ki Pro to a gang, simply select the check box for the unit in the Gang column. As a shortcut, if all available Ki Pro units are desired for a gang, select the All item below Gang. If you want to clear units from a gang, deselect them or use the Clear option.

There can be only one Master in a gang; typically, the IP address for the Ki Pro unit you entered and are viewing the web UI on is the one which should be promoted to the controlling role. If the unit with the IP address that is currently being viewed via the web UI is selected, a red capitalized MASTER text will appear on the web page above the columns.

A Master Ki Pro unit can send three items to the Slave Ki Pros within a gang; a record start command, a stop command, and clip naming.

The Settings area is where the Ki Pro clip name for each unit is decided. By default, Ki Pro is configured to use the standard clip naming conventions, not the custom clip naming conventions. The first user selection is Use Custom Clip Name; if you want to use the standard clip naming convention, leave this set to OFF, but if you want to create a custom clip name, mouse click on the OFF to reveal a pulldown for OFF/ON selection then click OK. If OFF was selected, the next parameter would be Clip Name, again, clicking on the SC or Clip presented brings up the pulldown and the OK box. Clip Number must be entered manually with a valid value of 1 through 999 and then the enter/return key must be hit. If the enter/return key is not entered after the selection, the value will revert to whatever was previously shown.

Clicking on the value next to Clip Append and Alpha Append both bring up a pulldown and an OK button. Take operates like the Clip Number, where a valid value of 1 to 999 can be entered and the enter/return key needs to be hit for confirmation of the value.

Note that for Slave Ki Pro units, the Settings column provides a selection of either Use: Master Name or Slave Name.

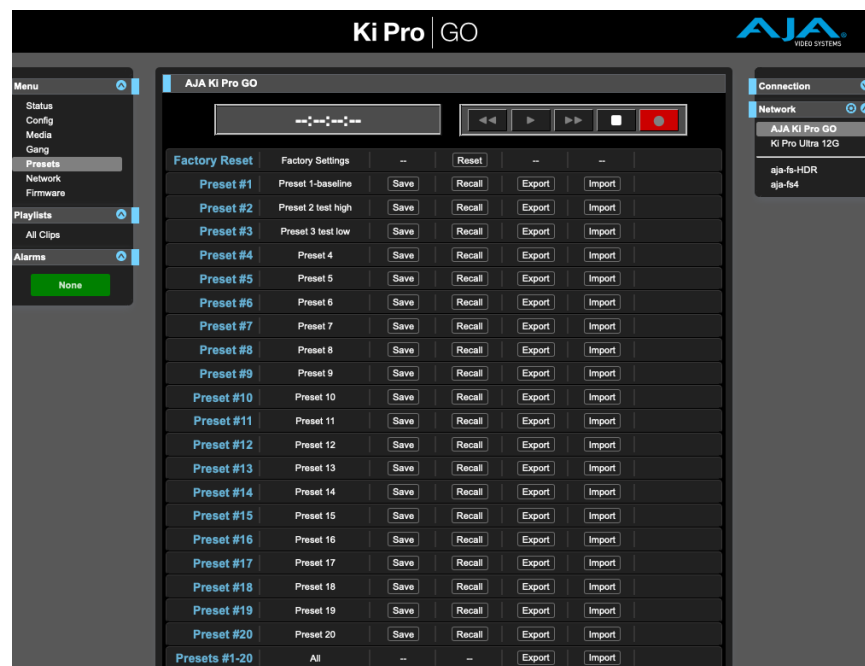
Clicking on the default value of Master Name pulls up a pulldown selection of Master Name or Slave Name with an OK confirmation button. If the desire is to have clips named the same across all Ki Pro units' recordings, then select Use: Master Name. If the desire is to have clips named independently on Ki Pro units, then select Slave Name. Selecting Slave Name means that the recording will take it's name from the individual Ki Pro's parameters and not accept the value pushed to the Slave by the Master Ki Pro.

NOTE: Ki Pro can initiate recordings among units quickly, but not all units will begin or end recordings precisely at the same time or the same frame. This is not an issue if matching timecode via LTC or RP188.

NOTE: Ki Pro does not provide simultaneous playback of media; only record start and stop functions are available.

Presets Screen

Figure 27. Ki Pro GO Presets Screen



The Presets screen allows you to save Preset Configurations into 20 separate memory registers and recall a preset whenever needed.

This screen also includes Export and Import functions that allow exporting one or all presets to your computer as files and importing exported preset files from your computer. A displayed message indicates successful or failed saves, recalls, exports, and imports.

Save Buttons

The Save buttons let you save the current configuration into the preset register with the associated name and number. A preset is a set of system parameters as they were set at the time the preset was stored. Only editable parameters are saved in the presets. Non- editable parameters are not saved.

To change a preset name, click in the name's text field and type a new name. Then press Enter.

When you recall a Preset Configuration, the recalled preset immediately replaces the system's existing configuration. All previous settings are lost unless you have previously stored them in another preset configuration or an exported file.

Import Buttons

The Import buttons let you browse for and import a preset file on your computer into the preset register associated with the selected button. A dialog box warns you that the operation will overwrite the current preset contents with the contents stored in the file.

Import Presets 1-20 lets you browse for and import a previously exported "all.preset" file from your computer. A dialog box warns you that the operation will overwrite all 20 current preset contents with the contents stored in the file.

Export Buttons

The Export buttons save the associated preset contents to a file on your computer. The file gets exported to the default download location specified in your browser options. The file name is the same as the preset name with the suffix .presets. If you export multiple files for the same preset, a number gets appended to ensure a unique file name. The file size is small, usually less than 10 kilobytes.

Export Presets 1-20 lets you save the contents of all presets to a file on your computer. The file gets exported to the default download location specified in your browser options with the name "all.preset". If you export multiple files, a number gets appended to ensure a unique file name.

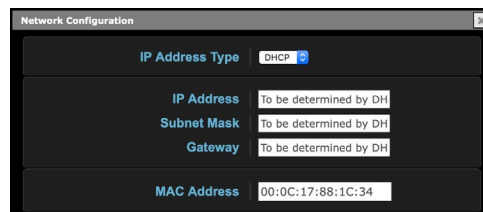
Recall Factory Preset

Recall Factory Preset recalls all editable video and audio parameters to their factory default settings. Individual presets, user preferences, and Network settings, such as the IP Address, are not affected.

Network Panel

Ki Pro GO's Web UI provides access to the Network Panel in two ways, either by clicking on **Network** in the Menu list on the right, or by clicking on the blue gear icon in the Network pane on the right. The information displayed depends on the current network configuration.

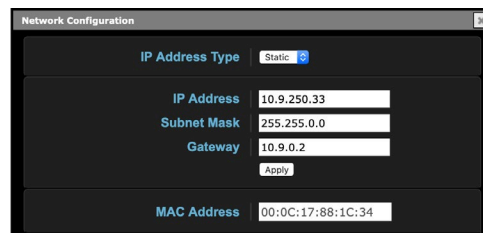
Figure 28. Network Panel, DHCP



The screenshot shows the 'Network Configuration' window. At the top, 'IP Address Type' is set to 'DHCP'. Below this, the 'IP Address', 'Subnet Mask', and 'Gateway' fields are all set to 'To be determined by DHCP'. The 'MAC Address' field is set to '00:0C:17:88:1C:34'.

The very top of your computer's web browser screen should always report the current IP address assigned to your Ki Pro GO by the DHCP server.

Figure 29. Network Panel, Static IP



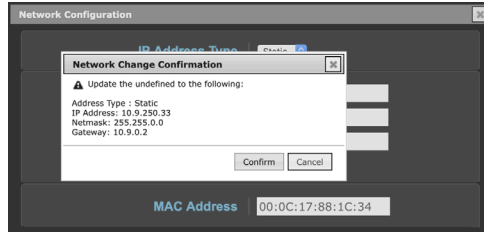
The screenshot shows the 'Network Configuration' window. At the top, 'IP Address Type' is set to 'Static'. Below this, the 'IP Address' field is set to '10.9.250.33', the 'Subnet Mask' field is set to '255.255.0.0', and the 'Gateway' field is set to '10.9.0.2'. There is an 'Apply' button below the gateway field. The 'MAC Address' field is set to '00:0C:17:88:1C:34'.

NOTE: LANs may be divided into zones, and devices on a LAN may have dynamically assigned (DHCP) IP addresses, or fixed (static) IP addresses. Before connecting Ki Pro GO to the LAN, talk to your network administrators to find out how they want it connected (DHCP or Static IP).

To configure a static IP address:

1. Click on the IP Address Type drop-down menu, and select **Static**.
2. Use standard text editing methods to change the IP address data, and then click **Apply**. You will be prompted to confirm the change.

Figure 30. Network Panel, IP Address Change Confirmation



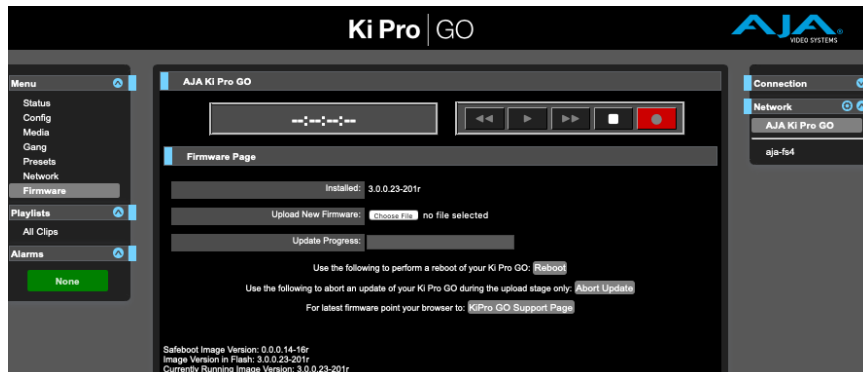
3. Click **Confirm**.

Ki Pro Go will reset its network configuration and the Web UI will reconnect to it, if a valid network configuration was entered.

Firmware Screen

The Firmware screen allows you to update your Ki Pro GO to a newer version of firmware as issued by AJA. Firmware updates often contain new features, improvements, and bulletins that may be very useful to you.

Figure 31. Ki Pro GO Firmware Screen



Firmware Update Procedure

1. Download the Latest Ki Pro GO firmware. Current and past releases of Ki Pro GO firmware are available from AJA's website:

<https://www.aja.com/products/ki-pro-go#support>

If your Ki Pro GO has access to the Internet, you can also directly reach this location by clicking the **Ki Pro GO Support Page** button on the Ki Pro GO's Firmware screen.

2. Select the Ki Pro GO firmware file for download from the website.

The firmware image to install on your Ki Pro GO has an ".ajas" extension. Depending on your PC or Mac operating system settings, the extension may not be visible to you in a file directory.

3. Go to the Ki Pro GO Firmware screen.

4. Click **Choose File** and navigate to the downloaded Ki Pro GO firmware file.
5. When a valid Ki Pro GO firmware file has been selected, click **Upload**. The file is tested for validity. Incomplete, corrupted, or non-Ki Pro GO firmware files will be rejected.
6. Agree to the steps and confirmation prompts as they are presented. Wait for the procedure to complete (it will take only a few minutes). When done, Ki Pro GO will prompt you to restart your machine.
7. Restart your Ki Pro GO by clicking on **Close**, or by power cycling the Ki Pro GO.

CAUTION: AJA strongly recommends performing a factory reset after updating Ki Pro GO firmware.

If there is a power outage or glitch during the firmware download, Ki Pro GO will boot the previously installed software version and the upgrade process can then be re-started.

Safeboot

Ki Pro GO has a safety feature where an internal “safeboot” copy of earlier software is retained in the event the update process fails or its software becomes corrupted. You can initiate a safeboot of the Ki Pro GO by holding in the front panel **STATUS** button while powering up, which launches the previously installed Ki Pro GO software version.

Playlists Screen

Figure 32. Ki Pro GO Playlists Screen



The Playlists screen lists all the clips available on the currently selected media. The currently selected clip is highlighted blue, and a mini-player with four buttons is shown for that clip.

The clip list tracks the currently configured Playback Media Source, and can be changed from this Web UI screen, from the Ki Pro GO's front panel Media menus. Record operations must stop before a different clip can be selected on the list.

To select different media from the Web UI, click on the USB Port number on the top of the pane. This will change the Playback Media Source parameter to match.

Figure 33. Ki Pro GO Playlists Screen Media Selection



You must stop clip playback or recording before you can select a different USB Port.

Quick Cueing

You can cue up a clip quickly by simply double-clicking the clip in the list. That clip will be highlighted in blue in the list and its first frame of video will appear on the output of the Ki Pro GO.

You can also quickly scan material by setting the Media Playback Type to **All** so that as you highlight clips for review, they will continue playing out of the Ki Pro GO outputs.

Clip Playback

To playback a cued clip using the Web UI, you can simply click on the **PLAY** transport button at the top of the screen.

You can also use the “mini-player” from within the playlist, which has Transport Control buttons that apply to that clip.

If a clip is currently active in playback, double-clicking on a different clip in the playlist initiates the playback of that new clip.

Clip Download

Ki Pro GO supports downloading clips to your local computer, by selecting one or more clips and clicking on the Download button (see ["Ki Pro GO Playlists Screen Media Selection" on page 54](#)).

Downloads are only allowed in IDLE to avoid the risk of any record/playback interference. If a Record or playback is initiated, the download will abort.

Uploads are not supported.

Playlist Refresh

The Refresh button on the upper right refreshes the clip information shown on the Playlists screen with the current directory information for a mounted SMB share. This button is not active when using USB media.

Ki Pro GO reads the SMB directory when it is mounted, and when a new clip begins to be added or deleted, and displays this information on the Playlists screen. This information will be accurate most of the time. However, if, for example, a new clip is in the process of being added when the SMB directory is read, the displayed duration for that clip on the Playlists screen may not be correct. Press this button to refresh the Ki Pro GO's clip information displayed on the Playlists screen with the current SMB directory information.

Appendix A – Specifications

Ki Pro GO Tech Specs

Video Formats

- (HD) 1080p 23.98, 24, 25, 29.97, 50, 59.94, 60
- (HD) 1080i 50, 59.94, 60*
- (HD) 1080PsF 23.98, 24, 25, 29.97, 30*,**
- (HD) 720p 50, 59.94, 60
- (SD) 525i 59.94*
- (SD) 625i 50*

* Recording will be converted to progressive

** PsF input support only

Note: Multi-channel recording requires the same frame rate and resolution for all input sources.

Video Codec Support

- Supports H.264/MPEG-4
- up to 25 Mbps recorded output

Audio Codec Support

- 4x audio compression codecs
- 2-channel audio support for each
- up to 320 kbps
- MPEG-4 AAC-LC

Codec Container

- .MP4

Removable Storage

- 5x USB 3.2 Gen 1 (5Gbps) ports
- All ports are also compatible with the following standards:
 - USB 2.0 (480 Mbps)
 - USB 3.0 (5 Gbps)*
 - USB 3.1 Gen 1 (5 Gbps)*
- 5V 1A max current per port

*Also referred to as SuperSpeed USB

Removable Storage File System Support

- FAT file systems
 - FAT16
 - FAT32
 - exFAT
- In-system formatting support for exFAT only

Network Storage

- SMB support via GigE port*
 - Only 1 network storage device can be used at any one time
 - Connection via IP address or DNS entry
 - Requires (externally defined) Domain name, Domain user name, user password
 - Customer must ensure sufficient bandwidth is available for recording*

*GigE network connectivity to storage is required, with 150Mb/s of bandwidth permanently available for media storage.

SMB Protocols Supported

- SMB 3.1.1
- SMB 3.0.2
- SMB 3.02
- SMB 2.1
- SMB 2.0
- SMB 1.0

Video Input

- 4x 3G-SDI BNC, SMPTE-259/292/296/424/425, 4:2:2 10-bit
- 4x HDMI standard Type A connector
- HDMI v1.4a
 - 4:4:4 RGB 8, 10-bit (deep color)
 - 4:2:2 YCbCr 8/10/12-bit
 - 4:2:0 YCbCr 8-bit

Video Output

- 5x 3G-SDI BNC, SMPTE-259/292/296/424/425, 4:2:2 10-bit
- 1x HDMI standard Type A connector
- HDMI v1.4a
 - 4:4:4 RGB 8, 10-bit (deep color)
 - 4:2:2 YCbCr 8/10/12-bit
 - 4:2:0 YCbCr 8-bit

Audio Input

- 4x SDI Audio
 - 2-Channel, 24-bit embedded audio
 - 48 kHz sample rate, synchronous
 - Sample rate converted to 48 kHz internally
- 4x HDMI Audio
 - 2-Channel, 24-bit HDMI embedded audio
 - 32 kHz, 44.1 kHz, 48 kHz sample rates, synchronous
 - Sample rate converted to 48 kHz internally
- 2x XLR input
 - Line/Mic/+48V Phantom Power Mic Levels supported (selectable by rear switch)
 - +24 dB full scale digital
 - +/- 0.3 dBFS 20 Hz to 20 kHz response
 - THD+N <= -90 dB

Audio Output

- 5x SDI embedded
 - 2-Channel, 24-bit embedded audio
 - 48 kHz sample rate, synchronous
- 1x HDMI embedded
 - 2-Channel, 24-bit embedded audio
 - 48 kHz sample rate, synchronous
- Stereo unbalanced headphone jack (1x 3.5mm jack) with volume control
- 2-Channel unbalanced 2x RCA connectors

Video Conversion

- Deinterlacing for recording
- Interlacing for playback (optional)
- PsF to progressive

Timecode

- SDI RP188/SMPTE 12M via SDI BNC
- LTC input (via Analog Audio XLR in R)
- TC Super Out

Reference Input

- External, 2x BNC
- Looping, nonterminating
- Input reference formats:
 - (HD) Tri-level sync
 - 720p 59.94
 - 720p 50
 - 1080i 59.94
 - 1080i 50
 - 1080p 23.98
 - 1080PsF 23.98
 - 1080p 24
 - 1080PsF 24
 - 1080p 25
 - 1080PsF 25
 - (SD) Analog composite
 - 525i 59.94
 - 625i 50

Network Interface

- 1x LAN connector (RJ-45 connector, 10/100/1000)
- Embedded web server for remote control
- Configuration and Transport Control via WEB Interface
- Clip download via Web Interface
- Remote control via REST

User Interface

- Rotary Selector knob
- Dedicated backlit transport controls and menu buttons
- Large 1280 x 720 TFT LCD display with Video Monitor and Menu/Status Overlays

Size (w x d x h)

- 8.64" x 10.59" x 3.31" (219.46 x 268.60 x 84.08 mm)

Weight

- 5.1 lbs (2.3 kg)

Power

- Dual, redundant, 7.5A max, 40W-55W typical-90W Max
- 100-240 VAC 50/60 Hz (adapter)
- 12-18Vdc 4-pin XLR (chassis)

Environment

- Safe Operating Temperature: 0 to 40 C (32 to 104 F)
- Safe Storage Temperature (Power OFF): -40 to 60 C (-40 to 140 F)
- Operating Relative Humidity: 10-90% non-condensing
- Operating Altitude: <3,000 meters (<10,000 feet)

Ki Pro GO Encoding Parameters

H.264 and Bitrates

KiPro GO encodes using the h.264 High profile. The bitrate is variable and frame rate dependent.

Ki Pro GO Encoding Bitrate Table

video format	Target Bit Rates (Mbits/sec)					Encoding Variation by Input Format
	Low	Med-Low	Medium	Med-High	High	
1080p59.94\60	5.0	10.0	15.0	20.0	25.0	
1080p50	4.2	8.3	12.5	16.7	20.8	
1080p29.97\30	2.5	5.0	7.5	10.0	12.5	
1080p25	2.1	4.2	6.3	8.3	10.4	
1080p23.98\24	2.0	4.0	6.0	8.0	10.0	
1080PsF30	2.5	5.0	7.5	10.0	12.5	1080PsF30 > 1080p30
1080PsF29.97	2.5	5.0	7.5	10.0	12.5	1080PsF29.97 > 1080p29.97
1080PsF25	2.1	4.2	6.3	8.3	10.4	1080PsF25 > 1080p25
1080PsF24	2.0	4.0	6.0	8.0	10.0	1080PsF24 > 1080p24
1080PsF23.98	2.0	4.0	6.0	8.0	10.0	1080PsF23.98 > 1080p23.98
1080i60	5.0	10.0	15.0	20.0	25.0	1080i60 > 1080p60
1080i59.94	5.0	10.0	15.0	20.0	25.0	1080i59.94 > 1080p59.94
1080i50	4.2	8.3	12.5	16.7	20.8	
720p59.94\60	2.2	4.4	6.7	8.9	11.1	
720p50	1.9	3.7	5.6	7.4	9.3	
625i50	0.8	1.7	2.5	3.3	4.2	625i50 > 625p50
525i59.94	0.8	1.7	2.5	3.3	4.2	525i59.94 > 525p59.94

Ki Pro GO software versions earlier than v2.0 supported three quality levels, named Low, Medium, and High. Med-Low and Med-High levels were added in software version v2.0. This means quality levels with the same name (except Low) can have different actual bitrates depending on the software version. For example, the pre v2.0 quality level named Medium corresponds to the v2.0 quality level named Med-Low, and the previous software quality level named High corresponds to the v2.0 quality level named Medium.

NOTE: Presets saved with pre v2.0 software that are recalled by a later software version will accurately restore the previously defined quality level bit rate, even though the name for that setting may have changed.

Entropy Encoding

Ki Pro GO uses the CABAC (Context Based Adaptive Binary Arithmetic Coding) algorithm for entropy encoding.

I/P Frame Structure (GOP Length)

Ki Pro GO encodes an I-frame once per second, which makes the GOP (Group-Of-Pictures) size equal to the frame rate of the video. For example, with 1080p50 video the GOP size will be 50, or 1 second.

Ki Pro GO does not support B-frames at this time.

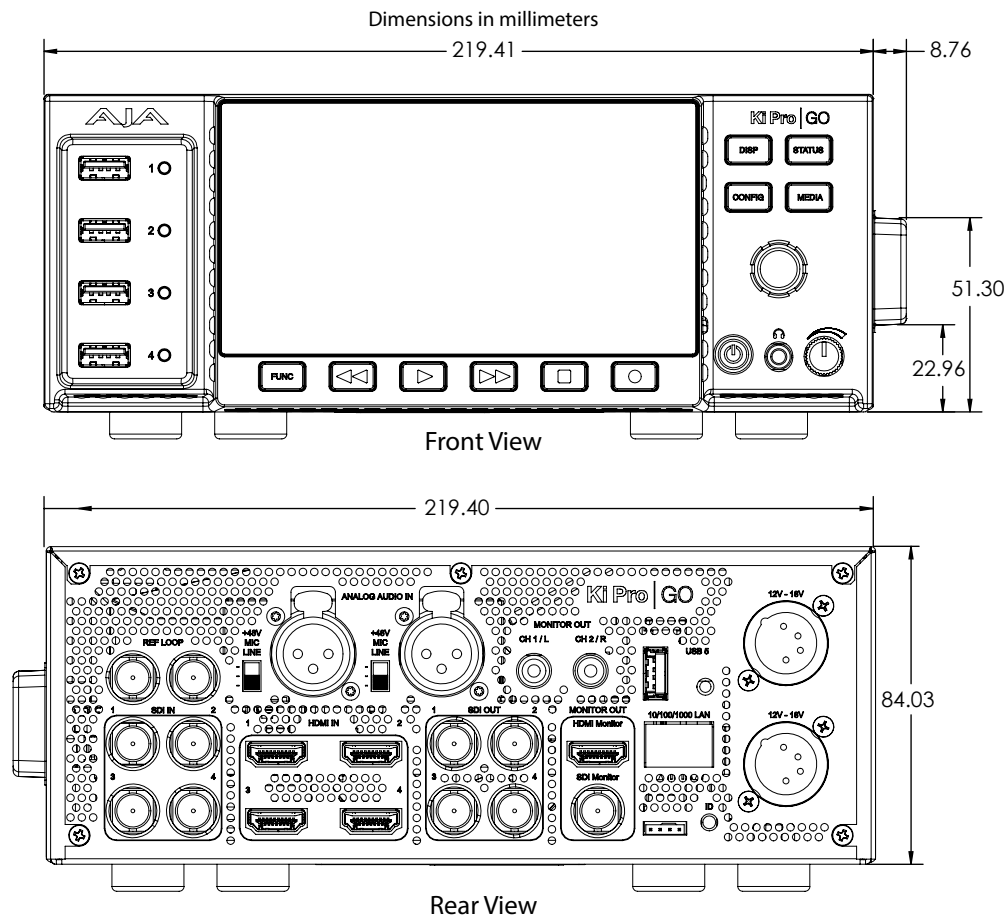
Bit Depth and Sampling

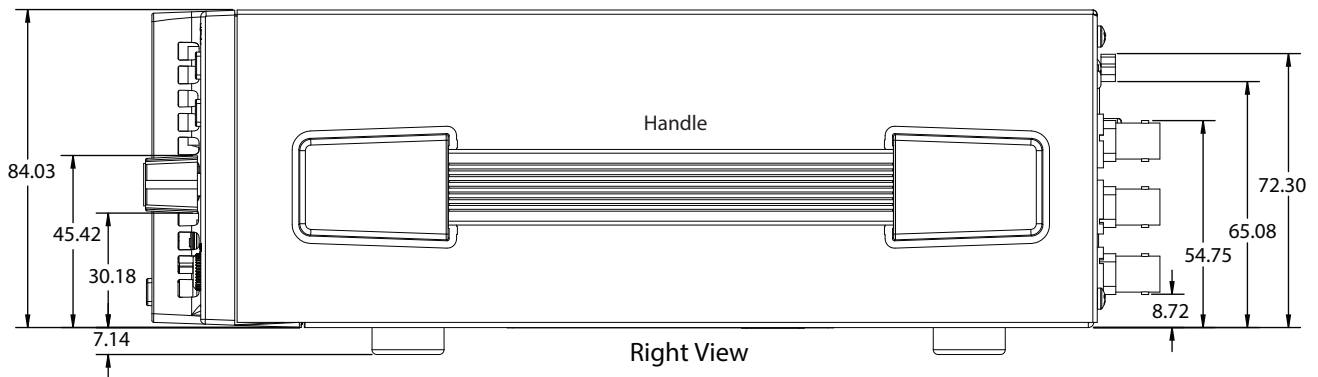
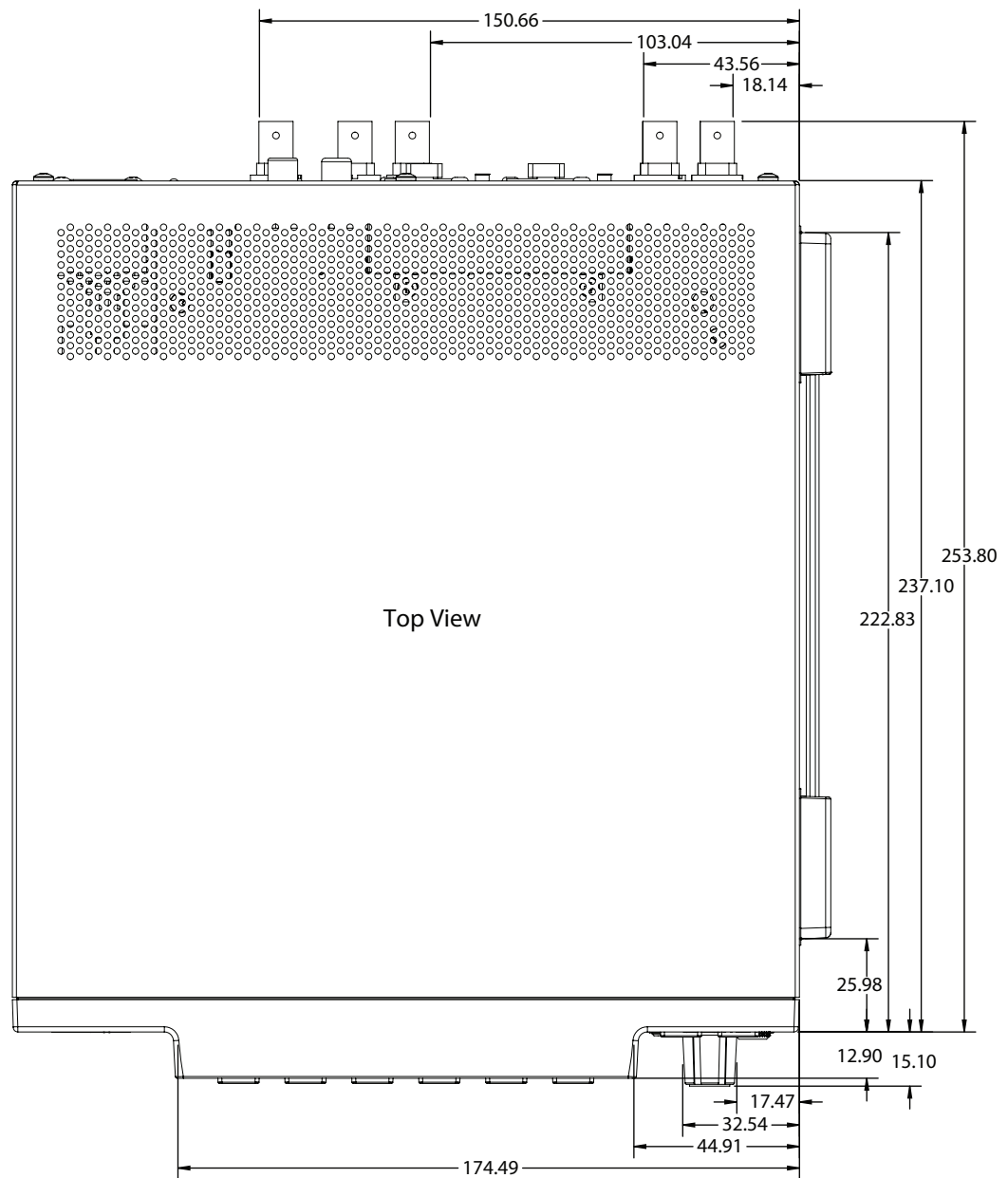
Ki Pro GO supports both 8-bit and 10-bit encoding and decoding of video.

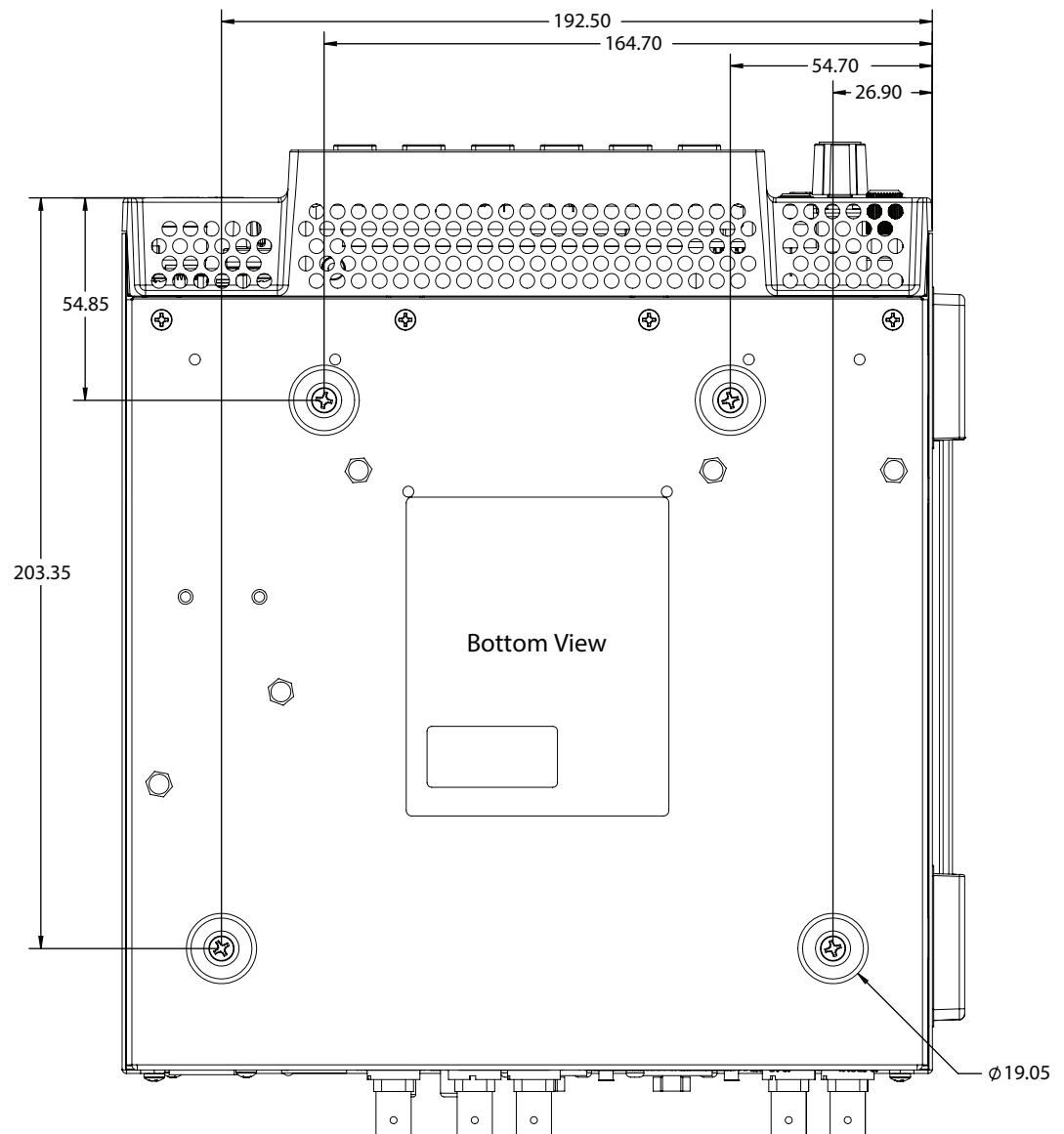
Ki Pro GO also supports 4:2:0 as well as 4:2:2 encoding and decoding of video.

Many 3rd party applications only support 8-bit and 4:2:0, so for maximum compatibility it is recommended to keep the encoding selections at 8-bit and 4:2:0.

Ki Pro GO Dimensions







Appendix B – Safety and Compliance

Federal Communications Commission (FCC) Compliance Notices

Class A Interference Statement

This equipment has been tested and found to comply with the limits for a Class A digital device, pursuant to Part 15, Subpart B of the FCC Rules. These limits are designed to provide reasonable protection against harmful interference in a commercial installation. This equipment generates, uses, and can radiate radio frequency energy and, if not installed and used in accordance with the instructions, may cause harmful interference to radio communications. However, there is no guarantee that interference will not occur in a particular installation. Operation of this equipment in a residential area is likely to cause harmful interference in which case the user will be required to correct the interference at his own expense. If this equipment does cause harmful interference to radio or television reception, which can be determined by turning the equipment off and on, the user is encouraged to try to correct the interference by one or more of the following measures:

- Reorient or relocate the receiving antenna.
- Increase the separation between the equipment and receiver.
- Connect the equipment into an outlet on a circuit different from that to which the receiver is connected.
- Consult the dealer or an experienced radio/TV technician for help.

FCC Caution

This device complies with Part 15 of the FCC Rules. Operation is subject to the following two conditions: (1) This device may not cause harmful interference, and (2) this device must accept any interference received, including interference that may cause undesired operation.

Canadian ICES Statement

Canadian Department of Communications Radio Interference Regulations

This digital apparatus does not exceed the Class A limits for radio-noise emissions from a digital apparatus as set out in the Radio Interference Regulations of the Canadian Department of Communications. This Class A digital apparatus complies with Canadian ICES-003.

Règlement sur le brouillage radioélectrique du Quadstère des Communications

Cet appareil numérique respecte les limites de bruits radioélectriques visant les appareils numériques de classe A prescrites dans le Règlement sur le brouillage radioélectrique du Quadstère des Communications du Canada. Cet appareil numérique de la Classe A est conforme à la norme NMB-003 du Canada.

European Union and European Free Trade Association (EFTA) Regulatory Compliance

This equipment may be operated in the countries that comprise the member countries of the European Union and the European Free Trade Association. These countries, listed in the following paragraph, are referred to as The European Community throughout this document:

AUSTRIA, BELGIUM, BULGARIA, CYPRUS, CZECH REPUBLIC, DENMARK, ESTONIA, FINLAND, FRANCE, GERMANY, GREECE, HUNGARY, IRELAND, ITALY, LATVIA, LITHUANIA, LUXEMBOURG, MALTA, NETHERLANDS, POLAND, PORTUGAL, ROMANIA, SLOVAKIA, SLOVENIA, SPAIN, SWEDEN, UNITED KINGDOM, ICELAND, LICHTENSTEIN, NORWAY, SWITZERLAND

Declaration of Conformity

Marking by this symbol indicates compliance with the Essential Requirements of the EMC Directive of the European Union 2014/30/EU.



This equipment meets the following conformance standards:

Safety

EN 60065: 2014 (T-Mark License)

EN 62368-1: 2014 + A11 (T-Mark License),

IEC 62368-1: 2014 (CB Scheme Certificate),

IEC 60065: 2014 (CB Scheme Report/Certificate)

Additional licenses issued for specific countries available on request.

Emissions

EN 55032: 2015, CISPR 32: 2015,

EN 61000-3-2: 2014, EN 61000-3-3: 2013

Immunity

EN 55103-2: 2009, EN 61000-4-2:2009,

EN 61000-4-3:2006 + A1:2008 + A2:2010, EN 61000-4-4:2012,

EN 61000-4-5:2014 + A1:2017, EN 61000-4-6:2013 , EN 61000-4-11:2020

Environments: E2, E3 and E4

NOTE: To meet compliance with the ESD regulations for application of the CE mark, AJA recommends the use of the following USB drives:

• SanDisk Ultra Flair USB 3.0 Flash Drives. Model number SDCZ73-016G-A

The product is also licensed for additional country specific standards as required for the International Marketplace.



Warning! This is a Class A product. In a domestic environment, this product may cause radio interference, in which case, the user may be required to take appropriate measures.

Achtung! Dieses ist ein Gerät der Funkstörgrenzwertklasse A. In Wohnbereichen können bei Betrieb dieses Gerätes Rundfunkstörungen auftreten, in welchen Fällen der Benutzer für entsprechende Gegenmaßnahmen verantwortlich ist.

Attention! Ceci est un produit de Classe A. Dans un environnement domestique, ce produit risque de créer des interférences radioélectriques, il appartiendra alors à l'utilisateur de prendre les mesures spécifiques appropriées..

Recycling Notice



This symbol on the product or its packaging indicates that this product must not be disposed of with your other household waste. Instead, it is your responsibility to dispose of your waste equipment by handing it over to a designated collection point for the recycling of waste electrical and electronic equipment. The separate collection and recycling of your waste equipment at the time of disposal will help conserve natural resources and ensure that it is recycled in a manner that protects human health and the environment. For more information about where you can drop off your waste for recycling, please contact your local authority, or where you purchased your product.

Korea KCC Compliance Statement

사 용 자 안 내 문
이 기기는 업무용 환경에서 사용할 목적으로 적합성평가를 받은 기기로서 가정용 환경에서 사용하는 경우 전파간섭의 우려가 있습니다.

Taiwan Compliance Statement

警告使用者：
這是甲類的資訊產品，在居住的環境中使用時，可能會造成射頻干擾，在這種情況下，使用者會被要求採取某些適當的對策。

This is a Class A product based on the standard of the Bureau of Standards, Metrology and Inspection (BSMI) CNS 13438, Class A. In a domestic environment this product may cause radio interference in which case the user may be required to take adequate measures.

Japan Compliance Statement

この装置は、クラスA情報技術装置です。この装置を家庭環境で使用すると電波妨害を引き起こすことがあります。この場合には使用者が適切な対策を講ずるよう要求されることがあります。 VCCI-A

This is a Class A product based on the standard of the VCCI Council (VCCI 32: 2016). If this equipment is used in a domestic environment, radio interference may occur, in which case, the user may be required to take corrective actions.

China Compliance Statement

This product has been tested to the following Chinese standards:

GB13837-2012, GB8898-2011, and GB17625.1-2012

This product meets the requirements of implementation rules for compulsory certification (REF NO. CNCA-C08-01:2014) under certificate number 2019010805234017.

Translated Warning and Caution Messages

The following caution statements, warning conventions, and warning messages apply to this product and manual.



Warning Symbol



Hazard Symbol



Caution Symbol

Before Operation Please Read These Instructions



Warning! Read and follow all warning notices and instructions marked on the product or included in the documentation.

Avertissement! Lisez et conformez-vous à tous les avis et instructions d'avertissement indiqués sur le produit ou dans la documentation.

Warnung! Lesen und befolgen Sie die Warnhinweise und Anweisungen, die auf dem Produkt angebracht oder in der Dokumentation enthalten sind.

¡Advertencia! Lea y siga todas las instrucciones y advertencias marcadas en el producto o incluidas en la documentación.

Aviso! Leia e siga todos os avisos e instruções assinalados no produto ou incluídos na documentação.

Avviso! Leggere e seguire tutti gli avvisi e le istruzioni presenti sul prodotto o inclusi nella documentazione.



Warning! Do not use this device near water and clean only with a dry cloth.

Avertissement! N'utilisez pas cet appareil près de l'eau et nettoyez-le seulement avec un tissu sec.

Warnung! Das Gerät nicht in der Nähe von Wasser verwenden und nur mit einem trockenen Tuch säubern.

¡Advertencia! No utilice este dispositivo cerca del agua y límpielo solamente con un paño seco.

Aviso! Não utilize este dispositivo perto da água e limpe-o somente com um pano seco.

Avviso! Non utilizzare questo dispositivo vicino all'acqua e pulirlo soltanto con un panno asciutto.



Warning! Do not block any ventilation openings. Install in accordance with the manufacturer's instructions.

Avertissement! Ne bloquez aucune ouverture de ventilation. Suivez les instructions du fabricant lors de l'installation.

Warnung! Die Lüftungsöffnungen dürfen nicht blockiert werden. Nur gemäß den Anweisungen des Herstellers installieren.

¡Advertencia! No bloquee ninguna de las aberturas de la ventilación. Instale de acuerdo con las instrucciones del fabricante.

Aviso! Não obstrua nenhuma das aberturas de ventilação. Instale de acordo com as instruções do fabricante.

Avviso! Non ostruire le aperture di ventilazione. Installare in conformità con le istruzioni del fornitore.



Warning! Do not install near any heat sources such as radiators, heat registers, stoves, or other apparatus (including amplifiers) that produce heat.

Avertissement! N'installez pas l'appareil près d'une source de chaleur telle que des radiateurs, des bouches d'air de chauffage, des fourneaux ou d'autres appareils (amplificateurs compris) qui produisent de la chaleur.

Warnung! Nicht in der Nähe von Wärmequellen wie Heizkörpern, Heizregistern, Öfen oder anderen Wärme erzeugenden Geräten (einschließlich Verstärkern) aufstellen.

¡Advertencia! No instale cerca de fuentes de calor tales como radiadores, registros de calor, estufas u otros aparatos (incluidos amplificadores) que generan calor.

Aviso! Não instale perto de nenhuma fonte de calor tal como radiadores, saídas de calor, fogões ou outros aparelhos (incluindo amplificadores) que produzam calor.

Avviso! Non installare vicino a fonti di calore come termosifoni, diffusori di aria calda, stufe o altri apparecchi (amplificatori compresi) che emettono calore



Warning! Unplug this device during lightning storms or when unused for long periods of time.

Avertissement! Débranchez cet appareil pendant les orages avec éclairs ou s'il est inutilisé pendant de longues périodes.

Warnung! Das Gerät ist bei Gewitterstürmen oder wenn es über lange Zeiträume ungenutzt bleibt vom Netz zu trennen.

¡Advertencia! Desenchufe este dispositivo durante tormentas eléctricas o cuando no se lo utilice por largos periodos del tiempo.

Aviso! Desconecte este dispositivo da tomada durante trovoadas ou quando não é utilizado durante longos períodos de tempo.

Avviso! Utilizzare soltanto i collegamenti e gli accessori specificati e/o venduti dal produttore, quali il treppiedi e l'esoscheletro.



Warning! Do not open the chassis. There are no user-serviceable parts inside. Opening the chassis will void the warranty unless performed by an AJA service center or licensed facility.

Avertissement! Ne pas ouvrir le châssis. Aucun élément à l'intérieur du châssis ne peut être réparé par l'utilisateur. La garantie sera annulée si le châssis est ouvert par toute autre personne qu'un technicien d'un centre de service ou d'un établissement agréé AJA.

Warnung! Öffnen Sie das Gehäuse nicht. Keine der Geräteteile können vom Benutzer gewartet werden. Durch das Öffnen des Gehäuses wird die Garantie hinfällig, es sei denn, solche Wartungsarbeiten werden in einem AJA-Service-Center oder einem lizenzierten Betrieb vorgenommen.

¡Advertencia! No abra el chasis. El interior no contiene piezas reparables por el usuario. El abrir el chasis anulará la garantía a menos que se lo haga en un centro de servicio AJA o en un local autorizado.

Advertência! Não abra o chassi. Não há internamente nenhuma peça que permita manutenção pelo usuário. Abrir o chassi anula a garantia, a menos que a abertura seja realizada por uma central de serviços da AJA ou por um local autorizado.

Avvertenza! Non aprire lo chassis. All'interno non ci sono parti riparabili dall'utente. L'apertura dello chassis invaliderà la garanzia se non viene effettuata da un centro ufficiale o autorizzato AJA.



Warning! Only use attachments and accessories specified and/or sold by the manufacturer.

Avertissement! Utilisez seulement les attaches et accessoires spécifiés et/ou vendus par le fabricant.

Warnung! Verwenden Sie nur Zusatzgeräte und Zubehör angegeben und / oder verkauft wurde durch den Hersteller.

¡Advertencia! Utilice solamente los accesorios y conexiones especificados y/o vendidos por el fabricante.

Aviso! Utilize apenas equipamentos/acessórios especificados e/ou vendidos pelo fabricante.

Avviso! Utilizzare soltanto i collegamenti e gli accessori specificati e/o venduti dal produttore.



Warning! Refer all servicing to qualified service personnel. Servicing is required when the device has been damaged in any way, such as power-supply cord or plug is damaged, liquid has been spilled or objects have fallen into the device, the device has been exposed to rain or moisture, does not operate normally, or has been dropped.

Avertissement! Référez-vous au personnel de service qualifié pour tout entretien. L'entretien est exigé quand l'appareil a été endommagé de quelque manière que ce soit, par exemple lorsque le cordon d'alimentation ou la prise sont endommagés, que du liquide a été versé ou des objets sont tombés dans l'appareil, que l'appareil a été exposé à la pluie ou à l'humidité, ne fonctionne pas normalement ou est tombé.

Warnung! Das Gerät sollte nur von qualifizierten Fachkräften gewartet werden. Eine Wartung ist fällig, wenn das Gerät in irgendeiner Weise beschädigt wurde, wie bei beschädigtem Netzkabel oder Netzstecker, falls Flüssigkeiten oder Objekte in das Gerät gelangen, das Gerät Regen oder Feuchtigkeit ausgesetzt wurde, nicht ordnungsgemäß funktioniert oder fallen gelassen wurde.

¡Advertencia! Consulte al personal calificado por cuestiones de reparación. El servicio de reparación se requiere cuando el dispositivo ha recibido cualquier tipo de daño, por ejemplo cable o espigas dañadas, se ha derramado líquido o se han caído objetos dentro del dispositivo, el dispositivo ha sido expuesto a la lluvia o humedad, o no funciona de modo normal, o se ha caído.

Aviso! Remeta todos os serviços de manutenção para o pessoal de assistência qualificado. A prestação de serviços de manutenção é exigida quando o dispositivo foi danificado mediante qualquer forma, como um cabo de alimentação ou ficha que se encontra danificado/a, quando foi derramado líquido ou caíram objectos sobre o dispositivo, quando o dispositivo foi exposto à chuva ou à humidade, quando não funciona normalmente ou quando foi deixado cair.

Avviso! Fare riferimento al personale qualificato per tutti gli interventi di assistenza. L'assistenza è necessaria quando il dispositivo è stato danneggiato in qualche modo, ad esempio se il cavo di alimentazione o la spina sono danneggiati, è stato rovesciato del liquido è stato rovesciato o qualche oggetto è caduto nel dispositivo, il dispositivo è stato esposto a pioggia o umidità, non funziona correttamente o è caduto



Warning! Do not defeat the safety purpose of the polarized or grounding-type plug. A polarized plug has two blades with one wider than the other. A grounding type plug has two blades and a third grounding prong. The wide blade or the third prong are provided for your safety. If the provided plug does not fit into your outlet, consult an electrician for replacement of the obsolete outlet.

Avertissement! La sécurité de la prise polarisée ou de la prise de type mise à la terre ne doit en aucun cas être empêchée de fonctionner. Une prise polarisée a deux broches, l'une étant plus large que l'autre. Une prise de type mise à la terre a deux broches et une troisième broche pour la mise à la terre. La broche large ou la troisième broche sont fournies pour votre sécurité. Si la prise fournie ne s'insère pas dans votre prise femelle, consultez un électricien pour le remplacement de la prise femelle obsolète.

Warnung! Der Sicherheitszweck des gepolten bzw. Schukosteckers ist zu berücksichtigen. Ein gepolter Stecker verfügt über zwei Pole, von denen einer breiter als der andere ist. Ein Schukostecker verfügt neben den zwei Polen noch über einen dritten Pol zur Erdung. Der breite Pol bzw. der Erdungspol dienen der Sicherheit. Wenn der zur Verfügung gestellte Stecker nicht in Ihren Anschluss passt, konsultieren Sie einen Elektriker, um den veralteten Anschluss zu ersetzen.

¡Advertencia! No eche por tierra la finalidad del tipo de enchufe polarizado con conexión a tierra. Un enchufe polarizado tiene dos espigas, una más ancha que la otra. Un enchufe con conexión a tierra tiene dos espigas iguales y una tercera espiga que sirve para la conexión a tierra. La espiga ancha, o la tercera espiga, sirven para su seguridad. Si el enchufe suministrado no encaja en el tomacorriente, consulte con un electricista para reemplazar el tomacorriente obsoleto.

Aviso! Não anule a finalidade da segurança da ficha polarizada ou do tipo ligação terra. Uma ficha polarizada tem duas lâminas sendo uma mais larga do que a outra. Uma ficha do tipo de ligação à terra tem duas lâminas e um terceiro terminal de ligação à terra. A lâmina larga ou o terceiro terminal são fornecidos para sua segurança. Se a ficha fornecida não couber na sua tomada, consulte um electricista para a substituição da tomada obsoleta.

Avviso! Non compromettere la sicurezza della spina polarizzata o con messa a terra. Una spina polarizzata ha due spinotti, di cui uno più largo. Una spina con messa a terra ha due spinotti e un terzo polo per la messa a terra. Lo spinotto largo o il terzo polo sono forniti per motivi di sicurezza. Se la spina fornita non si inserisce nella presa di corrente, contattare un elettricista per la sostituzione della presa obsoleta.



Warning! Since the Mains plug is used as the disconnection for the device, it must remain readily accessible and operable.

Avertissement! Puisque la prise principale est utilisée pour débrancher l'appareil, elle doit rester aisément accessible et fonctionnelle.

Warnung! Da der Netzstecker als Trennvorrichtung dient, muss er stets zugänglich und funktionsfähig sein.

¡Advertencia! Puesto que el enchufe de la red eléctrica se utiliza como dispositivo de desconexión, debe seguir siendo fácilmente accesible y operable.

Aviso! Dado que a ficha principal é utilizada como a desconexão para o dispositivo, esta deve manter-se prontamente acessível e funcional.

Avviso! Poiché il cavo di alimentazione viene usato come dispositivo di sconnessione, deve rimanere prontamente accessibile e operabile.



Warning! Protect the power cord from being walked on or pinched particularly at plugs, convenience receptacles, and the point where they exit from the device.

Avertissement! Protégez le cordon d'alimentation pour que l'on ne marche pas dessus ou qu'on le pince, en particulier au niveau des prises mâles, des réceptacles de convenance, et à l'endroit où il sort de l'appareil.

Warnung! Vermeiden Sie, dass auf das Netzkabel getreten oder das Kabel geknickt wird, insbesondere an den Steckern, den Steckdosen und am Kabelausgang am Gerät.

¡Advertencia! Proteja el cable de energía para que no se le pise ni apriete, en especial cerca del enchufe, los receptáculos de conveniencia y el punto del que salen del equipo.

Aviso! Proteja o cabo de alimentação de ser pisado ou de ser comprimido particularmente nas fichas, em tomadas de parede de conveniência e no ponto de onde sai do dispositivo.

Avviso! Proteggere il cavo di alimentazione in modo che nessuno ci cammini sopra e che non venga schiacciato soprattutto in corrispondenza delle spine e del punto in cui esce dal dispositivo.



Warning! Disconnect the external AC power supply line cord(s) from the mains power before moving the unit.

Avertissement! Retirez le ou les cordons d'alimentation en CA de la source d'alimentation principale lorsque vous déplacez l'appareil.

Warnung! Trennen Sie die Wechselstrom-Versorgungskabel vom Netzstrom, bevor Sie das Gerät verschieben.

¡Advertencia! Cuando mueva la unidad desenchufe de la red eléctrica el/los cable(s) de la fuente de alimentación CA tipo brick.

Advertência! Remova os cabos CA de alimentação brick da rede elétrica ao mover a unidade.

Avvertenza! Scollegare il cavo dell'alimentatore quando si sposta l'unità.



Caution! The AJA Ki Pro GO contains a lithium battery soldered in place permanently (it is not user replaceable). If you ever dispose of the Ki Pro GO, ensure you follow local regulations for safe disposal. The lithium battery shall not be exposed to excessive heat, such as sunshine or fire.

Attention ! L'AJA Ki Pro GO comporte une batterie au lithium rendue inamovible par soudage (elle ne peut être changée par l'utilisateur). Si jamais vous souhaitez vous débarrasser du Ki Pro GO, veillez à le faire en toute sécurité et dans le respect de la réglementation locale. La batterie au lithium ne doit pas être exposée à une chaleur excessive, qu'il s'agisse du soleil ou d'un feu.

Vorsicht! Der AJA Ki Pro GO enthält eine Lithiumbatterie, die dauerhaft in Stellung gelötet ist (sie kann nicht vom Anwender ausgewechselt werden). Wenn der Ki Pro GO jemals entsorgt wird, müssen die örtlichen Regeln bezüglich sicherer Entsorgung befolgt werden. Die Lithiumbatterie darf keiner übermäßigen Wärme ausgesetzt werden, wie z.B. Sonneneinstrahlung oder Feuer.

Attenzione! Il Ki Pro GO di AJA contiene una batteria al litio saldata in modo permanente (non può essere sostituita dall'utente). Se si elimina il Ki Pro GO, seguire scrupolosamente le norme locali concernenti lo smaltimento in sicurezza. La batteria al litio non deve essere esposta a calore eccessivo, come quello della luce solare diretta o del fuoco.

Cuidado! O AJA Ki Pro GO contém uma bateria de lítio soldada permanentemente no lugar (não pode ser substituída pelo utilizador). Ao eliminar o Ki Pro GO, certifique-se que o faz seguindo as regulamentações locais para uma eliminação segura. A bateria de lítio não deverá ser exposta a calor excessivo, como por exemplo, luz do sol ou lume.

¡Cuidado! El AJA Ki Pro GO contiene una batería de litio soldada en su lugar de forma permanente (no es reemplazable por el usuario). Si alguna vez decide deshacerse del Pro Ultra Ki, asegúrese de seguir las regulaciones locales para la eliminación segura. La batería de litio no debe exponerse a excesivo calor, como el sol o fuego.



Warning! Ki Pro GO has no user-serviceable parts. To remove power from the unit, remove the 4-pin XLR power connector to ensure disconnection. Refer all servicing to qualified service personnel. Servicing is required when the device has been damaged in any way, such as power-supply cord or plug is damaged, liquid has been spilled or objects have fallen into the device, the device has been exposed to rain or moisture, does not operate normally, or has been dropped.

Avertissement ! Aucun des composants du Ki Pro GO ne peut être remplacé par l'utilisateur. Pour mettre l'unité hors tension, déconnectez-la en débranchant le connecteur électrique XLR à quatre broches. Confiez l'entretien à du personnel de maintenance qualifié. Il faut effectuer une révision lorsque l'appareil a été endommagé de quelque façon que ce soit, par exemple lorsque le câble d'alimentation ou le connecteur est endommagé, lorsque du liquide a été renversé ou que des objets sont tombés sur l'appareil, lorsque ce dernier a été exposé à la pluie ou à l'humidité, lorsqu'il ne fonctionne pas normalement ou lorsqu'il a subi une chute.

Achtung! Der Ki Pro GO besitzt keine vom Anwender zu wartenden Teile. Um die Einheit stromlos zu schalten, den 4-Stift XLR Stromanschluss abziehen, um Abschaltung sicherzustellen. Wartung darf nur von qualifiziertem Wartungspersonal vorgenommen werden. Wartung ist erforderlich, falls das Gerät auf irgendeine Weise beschädigt worden ist, z.B. wenn das Netzkabel oder der Stecker beschädigt wurde, Flüssigkeit in das Gerät verschüttet wurde oder Gegenstände in das Gerät gefallen sind, das Gerät Regen oder Feuchtigkeit ausgesetzt wurde, es nicht auf normale Weise funktioniert oder fallengelassen wurde.

Avvertenza! Il Ki Pro GO non contiene parti su cui l'utente possa intervenire. Per spegnere il dispositivo, rimuovere il connettore di alimentazione XLR a 4 contatti. Per qualsiasi intervento rivolgersi a personale di manutenzione qualificato. È necessario intervenire sul dispositivo se questo è stato danneggiato in un modo qualsiasi, ad esempio la spina o il cavo di alimentazione ha subito danni, è stato versato liquido o sono caduti oggetti sul dispositivo oppure se il dispositivo è stato esposto alla pioggia o a umidità, non funziona normalmente o è caduto.

Avvertenza! In alcuni Paesi, potrebbe essere necessario fornire il corretto cavo di alimentazione. Usare solo un cavo per corrente alternata a norma IEC 320 tipo C-13 con corrente e tensione nominali di almeno 10 A a 250 V e certificato per il Paese in cui sarà usato.

Aviso! O Ki Pro GO não tem partes de manutenção pelo utilizador. Para retirar a energia da unidade, retire o conector de energia XLR de 4 pinos, para assegurar a desconexão. Indique toda a manutenção para pessoal de manutenção qualificado. A manutenção é necessária quando o dispositivo tiver sido danificado sob qualquer forma, como, por exemplo, se o cabo eléctrico ou de alimentação foi danificado, líquido foi derramado ou objectos caíram sobre o dispositivo, o dispositivo foi exposto a chuva ou humidade, não funciona normalmente ou se tiver caído.

¡Advertencia! Ki Pro GO no tiene piezas que el usuario pueda reparar. Para eliminar el potencia de la unidad, retire el conector de alimentación de 4 pines XLR para asegurar la desconexión. Diríjase a un personal calificado de servicio para toda reparación. Se requiere servicio cuando el aparato ha sido dañado de cualquier forma, por ejemplo el cable de alimentación o el enchufe está dañado, se ha derramado líquido u objetos han caído en el dispositivo, el dispositivo ha sido expuesto a la lluvia o humedad, no funciona normalmente o se ha caído.

Warranty and Liability Information

Limited Warranty on Hardware

AJA Video Systems, Inc. (AJA Video) warrants that the hardware product, not including storage modules or software components, will be free from defects in materials and workmanship for a period of three years from the date of purchase. AJA Video warrants that the storage modules provided as part of the hardware product will be free from defects in materials and workmanship for a period of one year from the date of purchase. AJA Video provides a separate software warranty as part of the license agreement applicable to software components.

If the Customer brings a valid claim under this limited warranty for a hardware product or storage module (hereafter, a “product”) during the applicable warranty period, AJA Video will, at its sole option and as the Customer’s sole remedy for breach of the above warranty, provide one of the following remedies:

- Repair or facilitate the repair the product within a reasonable period of time, free of charge for parts and labor.
- Replace the product with a direct replacement or with a product that performs substantially the same function as the original product.
- Issue a refund of the original purchase price less depreciation to be determined based on the age of the product at the time remedy is sought under this limited warranty.

To obtain service under this warranty, the Customer must notify AJA Video of the defect before expiration of the warranty period and make suitable arrangements for the performance of service by contacting AJA Video support through the channels set forth on the support contacts web page at <https://www.aja.com/support>.

Except as stated, the Customer shall bear all shipping, packing, insurance and other costs, excluding parts and labor, to effectuate repair. Customer shall pack and ship the defective product to a service center designated by AJA Video, with shipping charges prepaid. AJA Video shall pay to return the product to Customer, but only if to a location within the country in which the AJA Video service center is located. SOME JURISDICTIONS DO NOT ALLOW THE EXCLUSION OF IMPLIED WARRANTIES OR LIMITATIONS ON APPLICABLE STATUTORY RIGHTS OF A CONSUMER, SO SOME OR ALL OF THE TERMS OF THIS PARAGRAPH MAY NOT APPLY TO YOU.

Limitation of Liability

Under no circumstances shall AJA video BE LIABLE IN ANY WAY FOR ANY LOST, CORRUPTED OR DESTROYED DATA, FOOTAGE OR WORK, OR FOR ANY OTHER INDIRECT, SPECIAL, INCIDENTAL OR CONSEQUENTIAL DAMAGES OR LOST PROFITS, OR FOR ANY THIRD PARTY CLAIM, IN CONNECTION WITH THE PRODUCT, WHETHER RESULTING FROM DEFECTS IN THE PRODUCT, SOFTWARE OR HARDWARE FAILURE, OR ANY OTHER CAUSE WHATSOEVER, EVEN IF AJA VIDEO HAS BEEN ADVISED OF THE POSSIBILITY OF SUCH DAMAGES. AJA VIDEO’S LIABILITY IN CONNECTION WITH THE PRODUCT SHALL UNDER NO CIRCUMSTANCES EXCEED THE PURCHASE PRICE PAID FOR THE PRODUCT. The foregoing limitations apply even if any remedy set forth in this LIMITED WARRANTY fails of its essential purpose. SOME JURISDICTIONS DO NOT ALLOW THE LIMITATION OF LIABILITY FOR PERSONAL INJURY, OR OF INCIDENTAL OR CONSEQUENTIAL DAMAGES, SO SOME OR ALL OF THE TERMS OF THIS PARAGRAPH MAY NOT APPLY TO YOU.

Governing Law and Language; Your Rights

This limited warranty is the only warranty provided by AJA Video on the hardware product. It supersedes all prior or contemporaneous understandings regarding such subject matter. No amendment to or modification of this warranty will be binding unless in writing and signed by AJA Video. The laws of the State of California, USA will govern this warranty and any dispute arising from it. Any translation of this

Agreement is intended for convenience and to meet local requirements and in the event of a dispute between the English and any non-English versions, the English version of this warranty will govern. This limited warranty gives you specific legal rights and you may have other rights that vary from jurisdiction to jurisdiction, some of which are noted above.

Index

Symbols

3G SDI Level 32

A

AJA Support 2
Alarm Messages 26
Alarms Tab 25
Analog Audio 33
Analog Audio Inputs 16
Analog Audio Monitor Outputs 16
Audio Input 1 31
Audio Inputs 16
Audio Meter 12
Audio Monitor Outputs 16

B

Backup Recording 28
Bit Depth 60
BNC
 Ref Loop 14

C

CABAC (Context Based Adaptive Binary Arithmetic Coding) 60
CAT Ethernet Cable 20
Channel 1 Backup Rec Dest 39
Channel 1 Clip Name 38
Channel 1 Encode Bit Depth 39
Channel 1 Encode Quality 39
Channel 1 Encode Sampling 39
Channel 1 Primary Rec Dest 39
Chnl/Input Tab 24
Clip
 Cueing 29
 Loop Playback 30
 Playback All 29
 Play Clip 29
 Selection 29
Clip Download 55
Clip Name 37
Clip Number 40
Clip Playback
 Web UI 55
Config Button 11
CONFIG Menus 30
Config Screen 46
Cue Clip 55
Cueing a Clip 29

D

Date/Time 35
Daylight Savings 36
DC Power 19
Default Gateway 35
Default IP Address 35
DHCP Configuration Procedure 21

DISP Button 10
Domain 41
Domain Password 41
Domain Username 41
Download Clip 55
Drop-Frame Timecode 34

E

Enable Channel 1 30
Encoding Bitrate Table 59
Entropy Encoding 60
Ethernet 16
Ethernet Connector 16
Ethernet Switch 16

F

Factory Fefault
 Settings Not Affected 37
Factory Reset 37
Features 6
FFWD Button 13
File/Encode Tab 24
Firmware Screen
 Web UI 53
Firmware Update Procedure 53
Format All USB Media 43
Formatting Media 7
Formatting USB Media 42
Format USB Port 1-5 Media 42
Front Panel 9
FUNC Button 12

G

Gang Recording 50
Genlock Source 33
GOP (Group Of Pictures) 60
GOP Length 60

H

Handle Installation 17
Hardware Installation 17
HDMI/EDID Override 32
HDMI Inputs 15
HDMI Monitor Channel 31
HDMI Monitor Out 15
Headphone Audio 31
Headphone Jack 13
Headphone Volume Knob 13

I

I-Frame 60
Import Preset 52
Inter/PsF Override 33
IP Address 21, 35
IP Address Default 35
IP Address Type 35

I/P Frame Structure 60

L

LAN Connection 20, 21
LCD Display 10
Loop Play 42
Loop Playback 30
Loss of Video 31

M

MAC Address 35
Media Button 11
Media Formatting 7
Media Menu 37
Media Recording Capacity 28
Media Screen 48
Media Storage 7

N

NAS 7
Network Attached Storage 7
Network Control 20
 Direct Connection 20
 LAN Connection 21
Network Panel 52
Non-Drop Frame Timecode 34

O

Overlay Display 23

P

Packing Contents 17
Playback Media Source 42
Playback Type 42
PLAY Button 12
Playing a Clip
 Front Panel 29
Playlist Refresh 55
Playlists Screen
 Web UI 54
Power
 AC 19
 DC 19
Power Connector 16
Power Connector Pinouts 16
Power ON/OFF Button 13
Power Up 19
Preset
 Import 52
 Recall Factory Setting 52
 Save 52
Preset Export
 Web UI 52
Preset Import 52
 Web UI 52
Preset Save

- Web UI 51
- Presets Screen 51
- Progressive Playback 33

Q

- Quick Cueing 55
 - Web UI 55

R

- Rear Panel 14
- Recall Preset 37
- RECORD Button 13
- Recording
 - Gang 50
- Recording Backup Clips
 - Front Panel 28
- Recording Clips
 - Front Panel 28
- Record Minutes (max) 40
- Ref Loop 14
- Refresh Button 55
- Refresh SMB Directory 55
- REST API 8
- REV Button 13
- Routing Audio
 - Audio Routing 27
- Routing Video 27

S

- Safeboot 54
- Sampling 60
- Save Preset 52
- Screen Brightness 36
- Screen Dimmer 36
- SDI Channel Outputs 14
- SDI Inputs 14
- SDI Monitor Channel 31
- SDI Monitor Out 15
- Select Clip 29
- Serial Number 36
- SMB 7
 - SMB Dialect 41
 - SMB Domain 41
 - SMB Domain Password 41
 - SMB Domain Username 41
 - SMB Network Record Path 40
 - SMB Parameter Editing 49
 - SMB Server and Share 40
 - SMB Support 8
 - SMB Tab 25
 - Software Version 37
 - Static IP Connection Procedure 21
 - STATUS Button 11
 - Status Menu Display 24
 - Status Screen 45
 - STOP Button 12
 - Store Preset 37
 - Subnet Mask 35
 - Super Out 32
 - Supported USB Media 7

- System Name 35

T

- Technical Support 2
- Timecode
 - Drop-Frame 34
 - Non-Drop Frame 34
- Timecode Description 34
- Timecode In 34
- Time Code Size 32
- Timecode Value 34
- Timecode Value Type 34
- Time Zone 35
- Transport Control Buttons 12

U

- USB Media Port 9
- USB Port 1 Media Path 40
- USB Port LED Status Indicator 9
- User Control Knob 10

V

- Video Input 1 30
- Video Routing 27
- VU Meter 12

W

- Warning Messages 26
- Web Browser
 - Recommended 44
- Web Server 20, 44
- Web UI
 - Alarms Panel 46
 - Clip Playback 55
 - Config Screen 46
 - Firmware Screen 53
 - Media Screen 48
 - Network Panel 52
 - Playlists Screen 54
 - Preset Export Button 52
 - Preset Import Button 52
 - Preset Save Button 51
 - Presets Screen 51
 - Quick Cueing 55
 - Status Screen 45
- Web UI Status Screen Example 44