

Mini-Converter

4K2HD

Installation & Operation Guide

Version 1.7

Published: March 31, 2014



Because it matters.™

AJA®
VIDEO SYSTEMS

Table of Contents

Notices	4
Trademarks	4
Copyright	4
Contacting Support	4
Chapter 1: Introduction	5
Overview	5
4K2HD Operating Modes	5
Default Operation	6
Video Output	6
HDMI and SDI Output Control Differences	6
MiniConfig Control	6
MiniConfig Control Functions	6
Features	7
Block Diagram	8
I/O Connections	8
Installation	9
Chapter 2: Operation	10
USB Control and Setup—Using AJA MiniConfig	10
Installing MiniConfig on a Mac	10
Installing MiniConfig on a PC	10
Running MiniConfig	10
Operating MiniConfig	11
Tabbed Screens	12
Input Tab Screen	13
Input Video Selections	13
Output Tab Screen	14
Output Video Selections	14
HDMI Tab Screen	15
Audio Tab Screen	16
Audio Selections	16
Update Tab Screen	17
Software Update Procedure	17
Info Tab Screen	18
Appendix A: Specifications	19
Supported Video Formats	19
Video Input	19
Video Output	20
Audio Formats	20
Physical	20
Appendix B: Safety and Compliance	21
Federal Communications Commission (FCC) Compliance Notices	21
Class B Interference Statement	21
FCC Caution	21
Canadian ICES Statement	21
European Union and European Free Trade Association (EFTA)	
Regulatory Compliance	22

Declaration of Conformity	22
Korea KCC Compliance Statement	23
Taiwan Compliance Statement	23
Japanese Compliance Statement	23
Translated Warning and Caution Messages.....	23
Before Operation Please Read These Instructions	24
Warranty Information	31
Limited Warranty	31
Index.....	32

Notices

Trademarks

AJA®, KONA®, Ki Pro®, KUMO® and XENA® are registered trademarks of AJA Video, Inc., TruZoom™, TruScale™, Ki Pro Mini™, Io Express™, Io HD™, Io™ and “Work. Flow.” are trademarks of AJA Video, Inc. AirPort, Apple, the Apple logo, AppleShare, AppleTalk, FireWire, iPod, iPod Touch, Mac, and Macintosh are registered trademarks of Apple Computer, Inc. Final Cut Pro, QuickTime and the QuickTime Logo are trademarks of Apple Computer, Inc. Avid, Avid Media Composer and Avid DNxHD are trademarks of Avid Technology, Inc. All other trademarks are the property of their respective holders.

HDMI, the HDMI logo and High-Definition Multimedia Interface are trademarks or registered trademarks of HDMI Licensing LLC. DVI is a registered trademark of DDWG. All other trademarks are the property of their respective holders.

Copyright

Copyright © 2014 AJA Video, Inc. All rights reserved. All information in this manual is subject to change without notice. No part of the document may be reproduced or transmitted in any form, or by any means, electronic or mechanical, including photocopying or recording, without the express written permission of AJA Inc.

Contacting Support

When calling for support, have all information at hand prior to calling.

To contact AJA Video for sales or support, use any of the following methods:

Telephone: +1.530.271.3190

FAX: +1.530.271.3140

Web: <http://www.aja.com>

Support Email: support@aja.com

Sales Email: sales@aja.com

Chapter 1: Introduction



Overview

AJA's 4K2HD downconverts professional SDI 4K/UHD signals to HD resolution using AJA's high-quality scaling for cost-effective monitoring and conversion. 4K2HD's HD-SDI and HDMI outputs are both live all the time, producing fantastic-looking HD images for on set monitoring or direct-to-air broadcast. 4K2HD supports high frame rate (HFR) 4K inputs at 50 and 60fps and converts the HD output to 50 and 60fps for accurate viewing. 4K2HD's configuration options can extract an HD resolution image from the 4K input to provide a one-to-one pixel image for 4K focus checks on HD displays. Configuration can be set remotely via AJA MiniConfig software control over USB.

4K2HD Operating Modes

4K2HD has three working modes: 4K Down-Conversion mode, Non-4K mode, and Center Cut mode. The first two modes are selected automatically depending on the input video. These modes can also be manually set using the MiniConfig application.

- **4K Down Conversion mode:** If the format of the input video is detected as 4K format, or the unit is configured by MiniConfig, 4K input video is down-scaled to 2K video and then output on both the HDMI and the SDI outputs.
- **Non-4K mode:** If the format of input video is detected as non-4K video source, e.g. 720p60, or the unit is configured by MiniConfig, 4K2HD will not try to make 4K video from four video inputs. Instead, it will output video to HDMI/SDI from the selected SDI input.
- **Center Cut mode:** 4K2HD will be in Center Cut mode if the input video is 4K format, and the mode has been enabled through MiniConfig. In this mode the 2K center of 4K input video will be output to the HDMI and SDI outputs. No down-scaling occurs, and the output format is either 1920x1080 or 2048x1080 (depending the input source and the 2K cropping configuration).

Default Operation

The 4K2HD auto configures to the connected inputs. The auto-configure function identifies the connected inputs and generates the default outputs for the given input. Default operation can be overridden and set manually using AJA's MiniConfig application.

NOTE: *Signal conversion requires the presence of a valid SDI video signal on the SDI IN 1 BNC.*

For single SD or HD inputs, BNC input 1 is the default input. For dual-link 1.5Gb HD inputs, and 4K dual-stream 3Gb SDI inputs, inputs 1 and 2 are default. Where applicable, both level A and B 3Gb inputs are auto-detected and supported.

When connecting the 4K2HD with multiple SDI inputs in the auto-configure mode (default), as the user connects the first HD-SDI to input 1, the unit will output that input as a full screen HD. As soon as the second input is connected, the unit will know that either QuadHD or 4K x 2160 is present and the display will change to show the two connected quadrants in the upper left and upper right of the output. The remaining two quadrants will be displayed as they are connected.

It is possible to use two dual stream 3G inputs to make 3840 or 4K video. In this case SDI1 and SDI2 are assumed to be the inputs: SDI1 linkA makes the top left quadrant, SDI1 linkB makes the top right quadrant, SDI2 linkA makes the lower left quadrant, and SDI2 linkB makes the lower right quadrant. To use this mode change the Video Source Selection to '2 X SDI 4K'.

Video Output

4K2HD has two output connectors, HDMI and SDI, that are both active simultaneously.

For 4096x2160 inputs, the 4K2HD will output 2048x1080 if 2K crop option is turned off (through MiniConfig), otherwise 4096x2160 inputs will be scaled to 2048x1080, then cropped to 1920x1080. 4K2HD will not scale 4096 to 1920 pixels.

The HDMI and SDI output connectors will generally be the same video, with the exception of non-4K PsF video input.

SDI passthrough is enabled by default if the input video is 2K/HD PsF. In this case, SDI output is PsF format, and HDMI output is progressive format. The HDMI output is delayed one frame, compared to the SDI output. The SDI passthrough can be disabled by MiniConfig. If disabled, the SDI output will be progressive format, the same as HDMI output, with no frame delay.

HDMI and SDI Output Control Differences

Some video output control options are only applicable to HDMI output, such as color range, sample structure or HDMI/DVI standard. Some options are only applicable to SDI output, such as Level B control, or PsF passthrough. And some output control options are applied to both, such as Center Cut.

MiniConfig Control

Configuration set via MiniConfig is stored in the 4K2HD unit through subsequent power cycles.

MiniConfig Control Functions

- Input Video Selections:*
- Video Source (Auto, 4xSDI 4K, 2xSDI 4K, 2xSDI HD-DL, SDI 1-4)
 - Color Space (Auto, 422 YCbCr, 444 RGB, or 444 YCbCr)
 - RGB Range (SMPTE or Full color range).
 - Bit Depth (Auto, 8-bit, or 10-bit)

- Video Format (Auto, Progressive, Interlaced, or PsF).
 - 3G-B Mode (Auto, Dual Link, 2xHD, 1 x HD DS1, 1 x HD DS2)
- Output Video Selections:*
- 4K Convert (Downconvert, Center Cut)
 - 2K Crop (On or Off)
 - SDI Out (Passthrough or Processed)
- HDMI Output:*
- Color Space (Auto, 4:2:2 YCbCr , 4:4:4 RGB, 4:4:4 YCbCr
 - Bit Depth (Auto, 8-bit, or 10-bit)
 - RGB Range (Auto, SMPTE or Full)
 - Color Dithering (Off or On)
 - HDMI/DVI (Auto, HDMI, or DVI)
- Audio:*
- Input Source (Ch 1-8 or Ch 9-16 from any SDI input)
 - HDMI Channel Count (Auto, 2, 8)
 - Audio Offset In Frames

Features

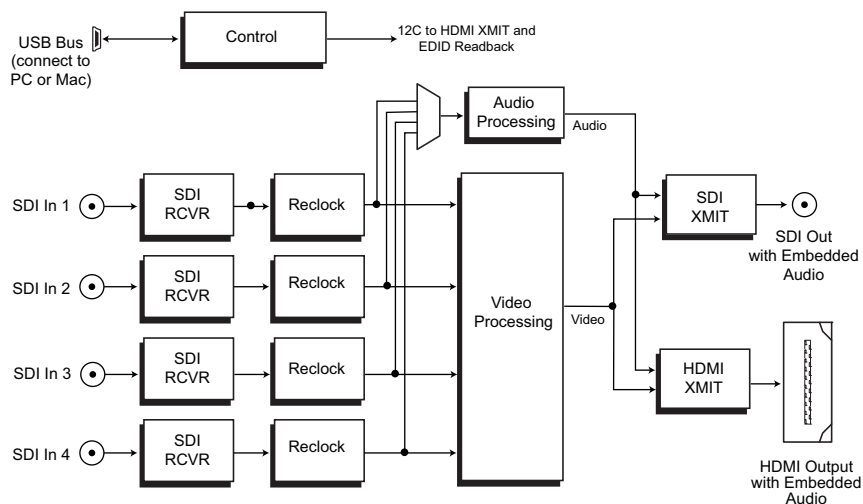
- 4K (4096x2160) and UltraHD (3840x2160) support (see ["Appendix A: Specifications on page 19"](#) for a complete list of supported inputs)
- Down-conversion to support 4K on HD-SDI and HDMI devices
- Simultaneous HD-SDI and HDMI output
- True 4K downscaled and cropped for HD output
- Center cut of original 4K frame supported for focus checks
- Supports 4K/UHD 50/60fps high frame rate input formats
- Configurable via AJA MiniConfig software for Mac and PC
- DWP-U-R1 Power Supply Included
- 5-year warranty

NOTE: 3D is not supported in this converter.

NOTE: 720p 4:4:4 formats are not supported in this release.

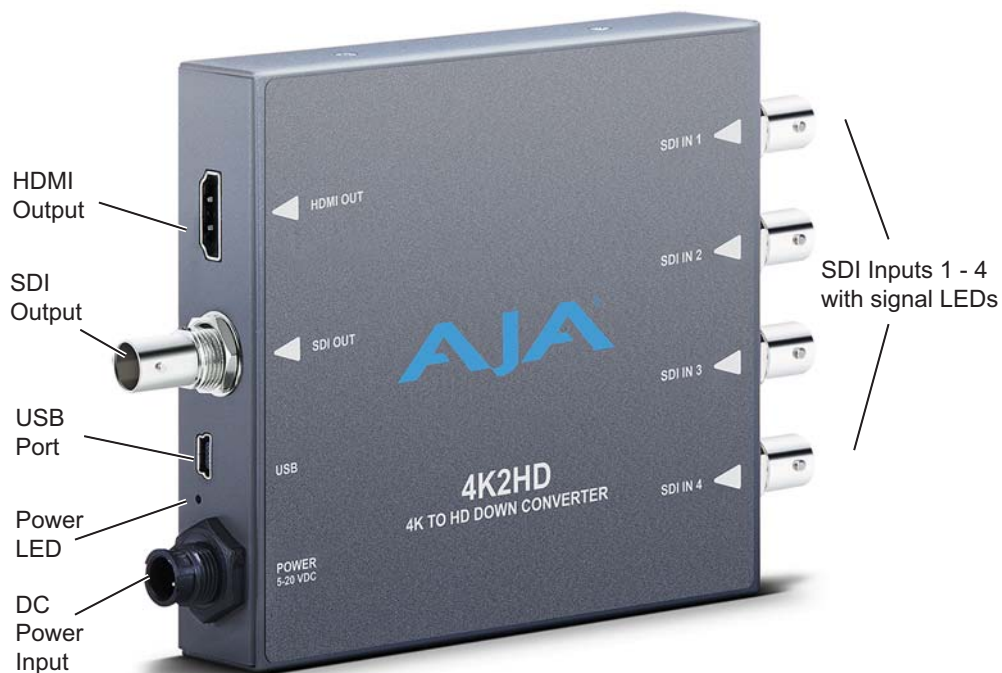
Block Diagram

Figure 1. 4K2HD Converter, Simplified Block Diagram



I/O Connections

Figure 2. 4K2HD Converter Connection



NOTE: LEDs adjacent to each SDI input connector indicate by color the detected signal type. Green is SD-SDI, red is HD-SDI, and amber/orange is 3G-SDI.

Installation

Typically, 4K2HD installation consists of the following steps:

1. Ensure the 4K2HD is disconnected from power.
2. Connect video equipment to the converter BNCs and HDMI connector.
3. Apply power to the converter (AJA power supply included).
4. The 4K2HD will now run using the default factory settings. If you wish to alter the factory settings, you'll need to:
 - Install the AJA MiniConfig software on your computer.
 - Attach the 4K2HD via USB.
 - Make your changes using MiniConfig setup screens.

This process is detailed in *["USB Control and Setup—Using AJA MiniConfig" on page 10.](#)*

Chapter 2: Operation

USB Control and Setup—Using AJA MiniConfig

The 4K2HD can usually be used right out of the box for most applications since it is designed to recognize inputs and perform standard actions automatically by default. However you can also manually configure the 4K2HD using a supplied software application for PCs and Macs called “MiniConfig.” This same application can be used to update Mini-Converter firmware released by AJA.

Installing MiniConfig on a Mac

To install the application on a Mac, insert the CD supplied with the Mini-Converter into the computer, drag the “AJA MiniConfig” application for your platform (Mac or PC) to your desktop or an applications folder.



AJA MiniConfig

NOTE: *Macintosh computers must be Intel-based (G5, G4 and earlier models will not work with MiniConfig).*

Installing MiniConfig on a PC

To install the application on a Windows PC, insert the CD supplied with the Mini-Converter into the computer, locate the “MiniInstaller” application, and then double-click it.

Figure 3. MiniConfig Setup Wizard on PC



A Setup Wizard will guide you through the installation. Just click Next to begin.

Answer all questions in the subsequent dialogues; when done, you will be able to locate the MiniConfig application in the AJA folder in the Programs listing.

Running MiniConfig

Connect the Mini-Converter to the PC or Mac via the supplied USB cable. Connect the external power supply (supplied) to the Mini-Converter.

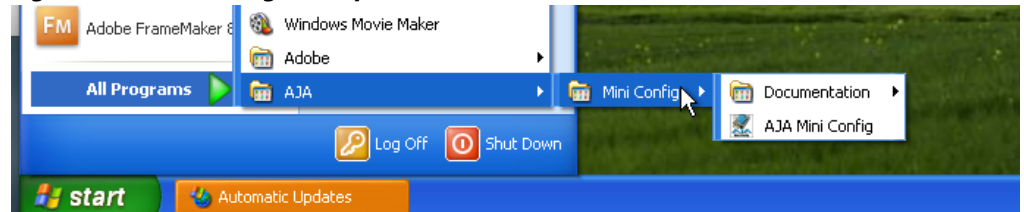
NOTE: On a Mac, when the Mini-Converter is connected to the USB port, you may see an alert like that shown following. If you do, press *Cancel*—this alert can be ignored.

Figure 4. Mac Network Message (ignore)



PC Startup: To run MiniConfig on a PC, find the AJA MiniConfig in the program list and locate the AJA MiniConfig application.

Figure 5. PC MiniConfig Startup



Mac Startup: To run MiniConfig on a Mac, double-click the Applications folder and locate the AJA MiniConfig application. Double-click the application to launch it.

Saving Setups: A *File* menu at the top of the MiniConfig application menu bar allows you to *Save* the state of the Mini-Converter, with your current settings, to a file for later recall. This allows you to set up the converter for different applications, storing each (with *Save*) to a unique name for easy recall—using the *Open* menu item. A *Revert to Factory Settings* menu item similarly allows you to change the settings back to AJA's factory defaults. An *Edit* menu allows you to cut and paste values to/from fields, just as in other applications.

Operating MiniConfig

The MiniConfig application provides a graphic interface for viewing settings and updating software. It consists of an information area at the top that shows the available Mini-Converters attached to the computer via USB, with a graphical rendering of the selected Mini-Converter showing all the connectors and their current state.

Colored text next to the connectors indicates the signal type and what the Mini-Converter is doing:

- *Blue* text indicates the values automatically selected
- *Black* text indicates values that you have manually selected
- *Red* text indicates the Mini-Converter is not detecting a signal or cannot negotiate with the attached device

NOTE: Even if no output device is detected, it still shows the signal it is outputting.

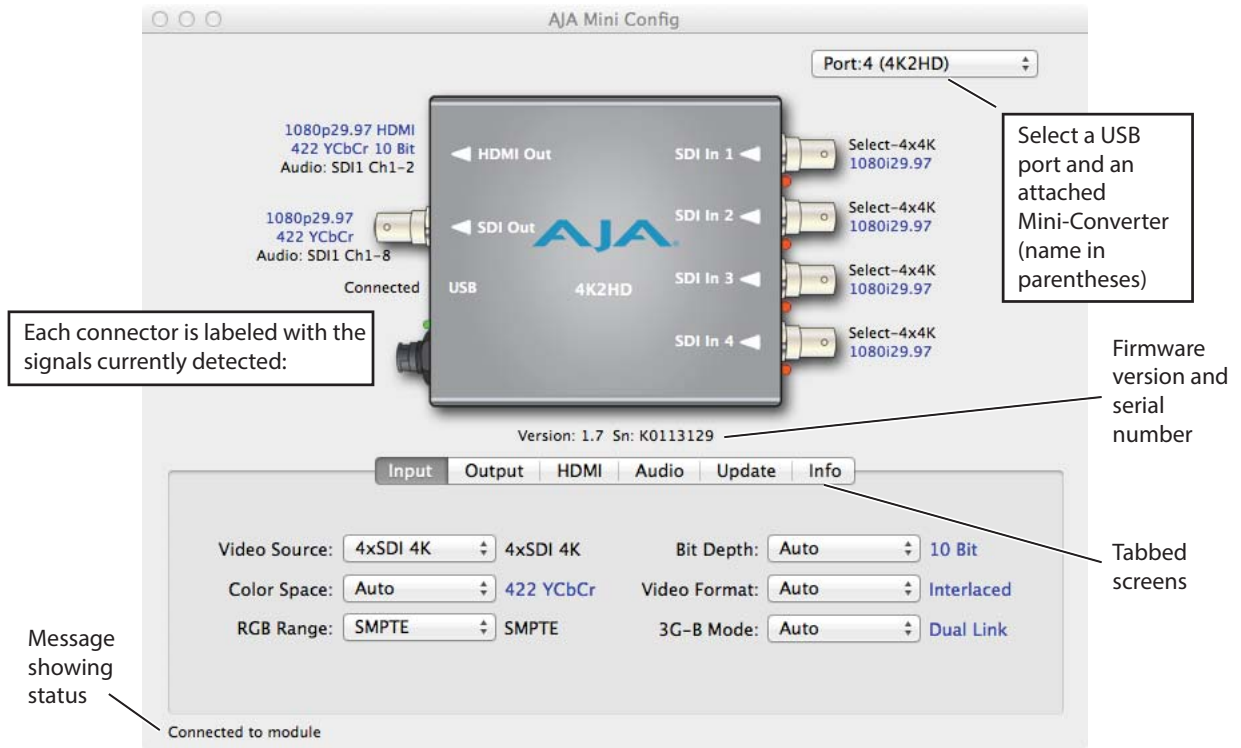
NOTE: Configuration settings in red will change based on the attached output device as well as input signals. For improved accuracy and reliability, you should configure the Mini-Converter only when the target output device is attached and input signals are supplied at the inputs.

Screens are virtually the same on both PC and Mac, with subtle differences that reflect the general look of the platform environment.

Running Multiple Mini-Converters:

MiniConfig can manage multiple AJA Mini-Converters connected via USB—even when they are of differing types. However it only connects to one at a time. You can choose which Mini-Converter you wish to control using the pulldown menu in the upper right hand corner. If you want to configure and update multiple Mini-Converters in parallel, you can do it by running multiple instances of the MiniConfig application and have each control a different Mini-Converter.

Figure 6. MiniConfig, Video Screen



NOTE: LEDs adjacent to each SDI input connector indicate by color the detected signal type. Green is SD-SDI, red is HD-SDI, and amber/orange is 3G-SDI.

Selecting a Mini-Converter with the dropdown menu causes this application to connect to the selected converter. The graphic of Mini-Converter and text below it provides:

- Type of converter
- Firmware version
- Serial number of the unit

A status field at the bottom of the screen shows if your application is connected and communicating with the Mini-Converter.

When configuring the Mini-Converter, select it from the top pulldown, view the current settings and change any values. Making a change communicates that new value to the Mini-Converter's non-volatile memory.

Tabbed Screens

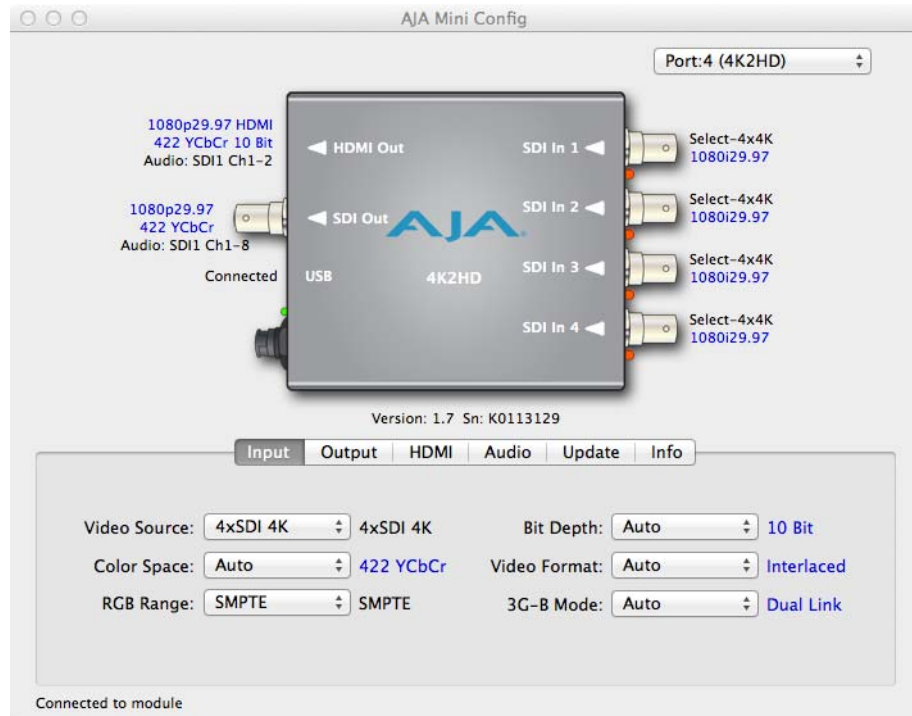
The Tabs delineate control screens with groups of controls for each type of task to be performed. The controls for the actual configuration parameters are specific to each Mini-Converter type. With your Mini-Converter connected and selected, click on any of the tab buttons and the screen below will change to match.

Any parameter changes you make are immediately implemented and are saved, overwriting previous settings.

Input Tab Screen

Click on the Input tab to view and make changes to the converter's input settings.

Figure 7. MiniConfig, Input Tab Screen



Input Video Selections

- Video Source:** Selects the input video format. Choose from the following:
- Auto - automatically selects the format based on the input video parameters.
 - 4xSDI 4K
 - 2xSDI 4K - (3G-B Dual Stream input required)
 - 2xSDI HD-DL - (2 wire SMPTE 372)
 - SDI 1, SDI 2, SDI 3, or SDI 4

NOTE: One of the 4 incoming quadrants of 4K video can be shown full screen on the HDMI/SDI outputs. This is accomplished by selecting one of the 4 SDI inputs, but requires that all 4 SDI inputs are connected.

Color Space: Selects the Input Video Color Space. Choose Auto, 422 YCbCr, 444 RGB, or 444 YCbCr. Choosing "Auto" will automatically select color mode based on the input video parameters and the payload ID.

RGB Range: Selects the Input Video Color Range. Choose SMPTE (default) or Full color range. There is no auto detection for color range.

Bit Depth: Selects the input video bit depth. Choose Auto, 8-bit, 10-bit, or 12-bit. Choosing "Auto" automatically selects the bit depth based on the input video parameters and the payload ID.

Video Format: Selects the Input Video Format. Choose from Auto, Progressive, Interlaced, or PsF (progressive segmented frame). Choosing "Auto" automatically selects the format based on the input video parameters and the payload ID.

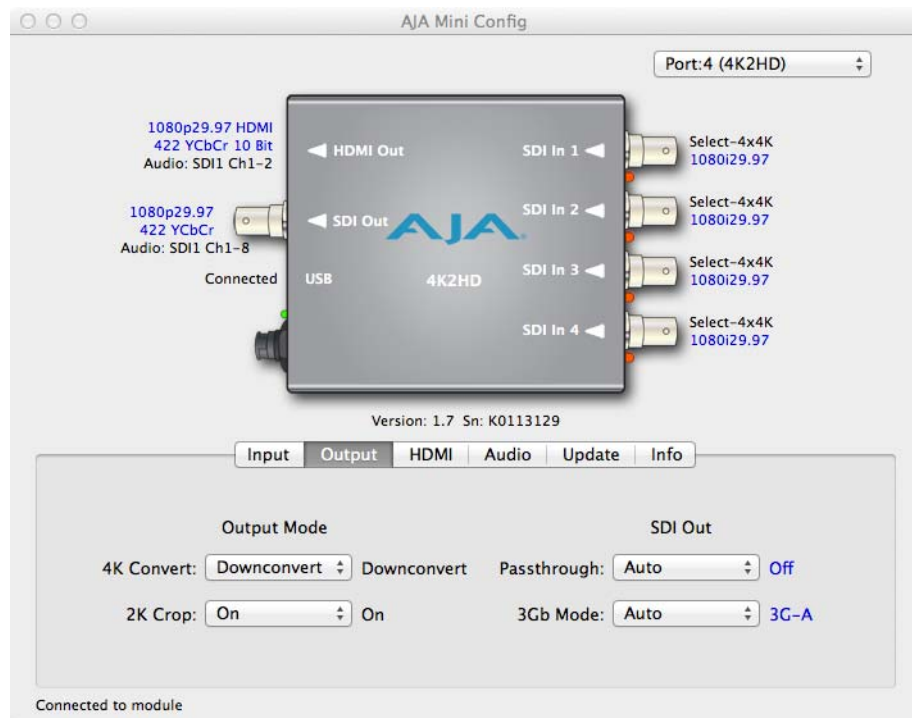
3G-B Mode: Selects the 3G level B Video Mode. Choose from the following:

- Auto - automatically selects the format based on the input video parameters.
- Dual Link - select this when the input is Dual Link., your 3G signal is carrying 444 information, or the input is 1080p50/59.94.
- 2xHD - Dual Stream - each Data Stream is an independent source.
- 1 x HD DS1 - use only Data Stream 1 as a single video.
- 1 x HD DS2 - use only Data Stream 2 as a single video.

Output Tab Screen

Click on the Output tab to view and make changes to the 4K2HD Output settings. These settings can affect both the HDMI and SDI outputs.

Figure 8. MiniConfig, Output Tab Screen



Output Video Selections

Output Mode

- 4K Convert:**
- Downconvert - Downconverts incoming 4K signal to HD (default setting).
 - Center Cut - Selects the center portion of the incoming 4K signal for display. No down-scaling occurs, and the output format is either 1920x1080 or 2048x1080 (depending the input source and the 2K Crop setting).
- 2K Crop:** Choose On or Off. Provides the option of center cutting 2Kx1080 video signals to make 1920x1080., or center cutting a 4Kx2160 signal to make 1920x1080. Default is On.

SDI Out

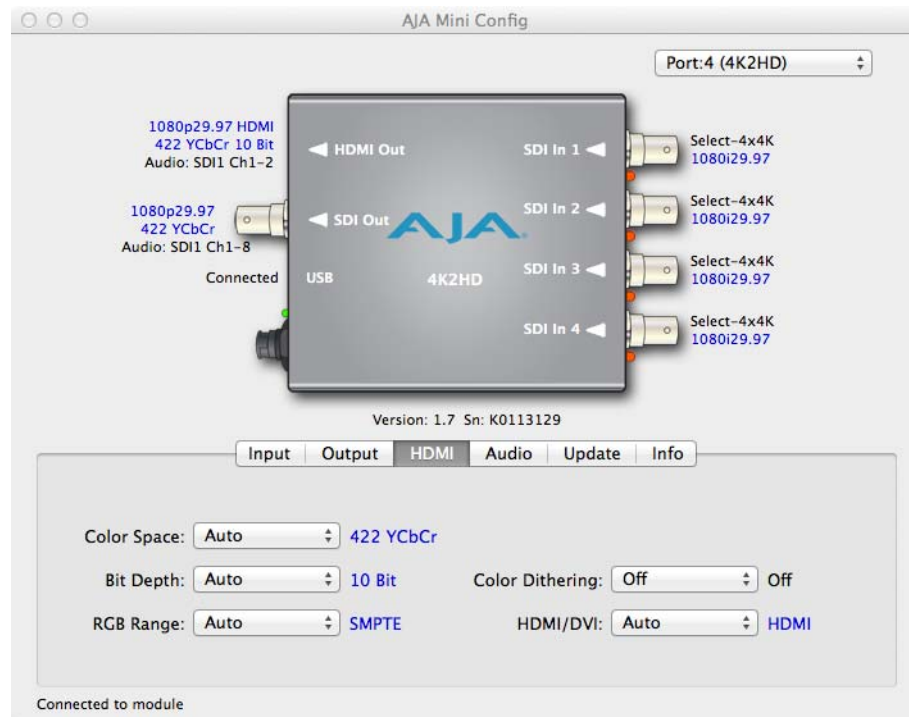
Passthrough: Choose Auto, Off, or On (default is Auto). This setting can be used with HD or 2K psf format input signals. When On, psf format will passthrough to the SDI output instead of the converted, progressive format signal.

3Gb Mode: Choose Auto, 3G-A, or 3G-B (default is Auto).

HDMI Tab Screen

Click on the HDMI tab to view and make changes to the 4K2HD HDMI output settings.

Figure 9. MiniConfig, HDMI Tab Screen



Color Space: Selects the desired output video format. Choose from the following:

- Auto - selects the video format based on the input video and the attached device's capabilities (default setting).
- 4:2:2 YCbCr (cannot exceed 10-bit depth)
- 4:4:4 RGB
- 4:4:4 YCbCr

Bit Depth: Choose from Auto, 8-bit, or 10-bit (see limitations above). Choosing "Auto" automatically selects the bit depth based on the input video and the attached device's capabilities.

RGB Range: Choose Auto, SMPTE or Full. Choosing "Auto" automatically selects the input color range setting.

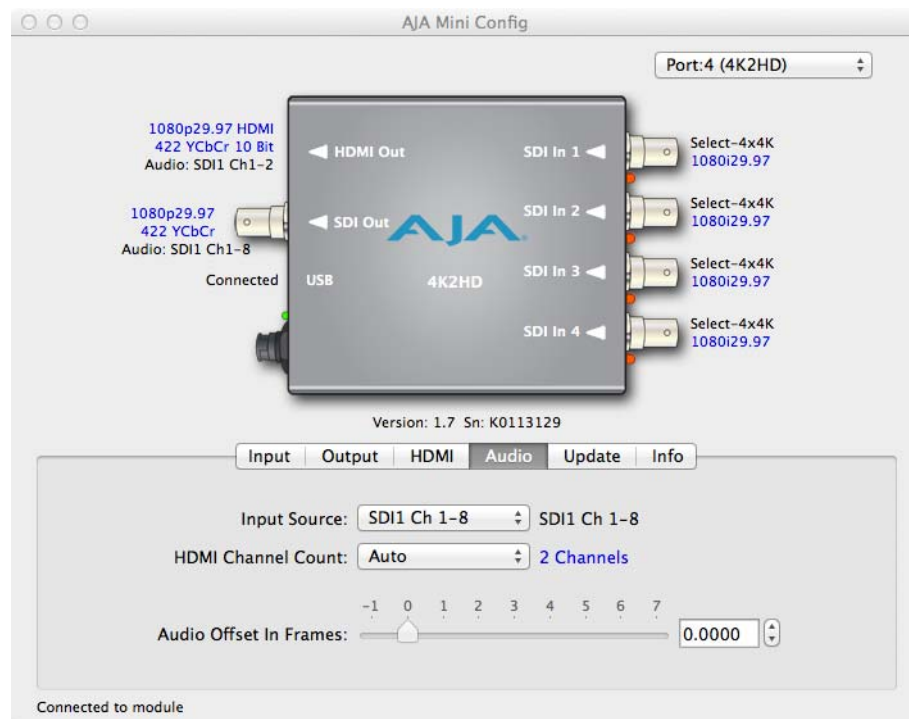
Color Dithering: Choose Off or On. Default is Off.

HDMI/DVI: Choose Auto, HDMI, or DVI. When DVI is selected, any audio signals present are not passed. Choosing "Auto" automatically selects the output mode based on the attached device's capabilities. Default is Auto.

Audio Tab Screen

Click on the Audio tab to view and make changes to the 4K2HD audio settings.

Figure 10. MiniConfig, Audio Tab Screen



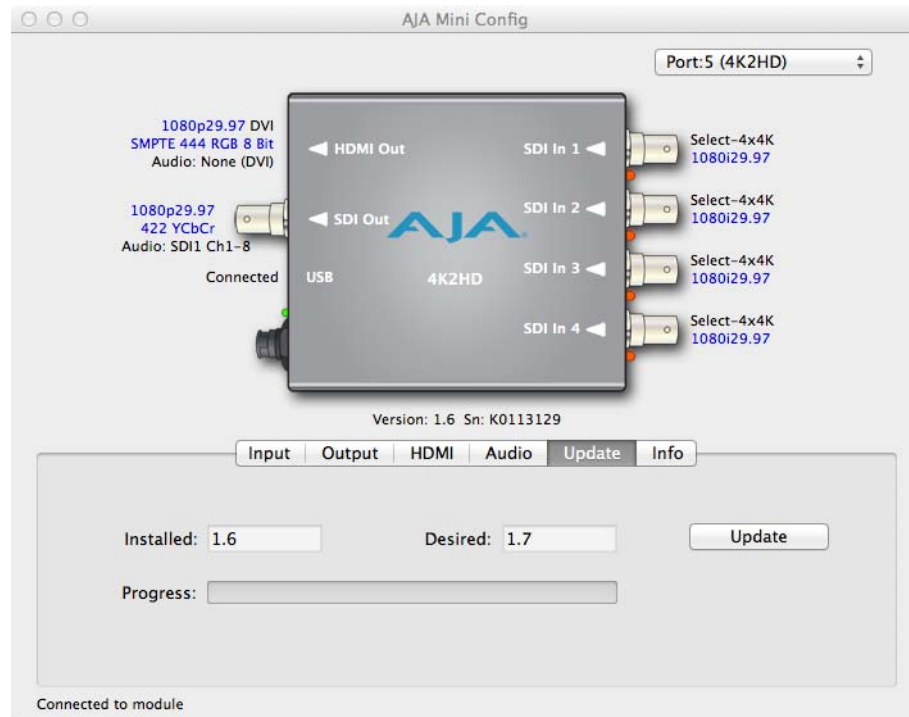
Audio Selections

- Input Source:** Choose which embedded audio channels are routed to the HDMI output. Eight channels are routed at a time. You can choose Ch 1-8 or Ch 9-16 from any SDI input.
- HDMI Channel Count:** Choose Auto, 2 of 8 channels or 8-channels embedded audio. Choosing "Auto" automatically selects the audio channels based on the attached device's capabilities.
- The SDI output embedded audio always follows the selected HDMI Output source selection and is limited to 8 channels max.
- Audio Offset In Frames:** Permits time shifting the embedded audio in relationship to the video (for example, to correct for lip sync problems), in 1/16 of a frame increments. Range is from -0.8125 video frame to +7.0 video frames. The actual time duration of delay will vary depending on the frame rate of the format being converted.
- Default offset value is 0 frame to match the video delay path, resulting in time-aligned audio on the output. Positive offset delays the audio additional frames (relative to the video output), negative offset advances the audio relative to the video output.

Update Tab Screen

Use this Update screen to view the software version currently installed on the converter or install new software.

Figure 11. MiniConfig, Update Screen



NOTE: When discussing Mini-Converters, “Firmware” is software that will be stored in the Mini-Converter’s non-volatile memory and used when it is powered up. This is something different than the MiniConfig application software. The version numbers shown in the Update screen refer only to the firmware.

The following fields and control are present in this screen:

- Installed:** This field shows the version of the firmware currently installed inside the Mini-Converter.
- Desired:** This field shows the version of firmware embedded in the MiniConfig application which you can install into the Mini-Converter by clicking the *Update* button.
- Update:** This button initiates a software update operation loading the “Desired” version of firmware into the Mini-Converter’s non-volatile memory.
- Progress:** This indicator bar shows the progress of software being installed.

Software Update Procedure

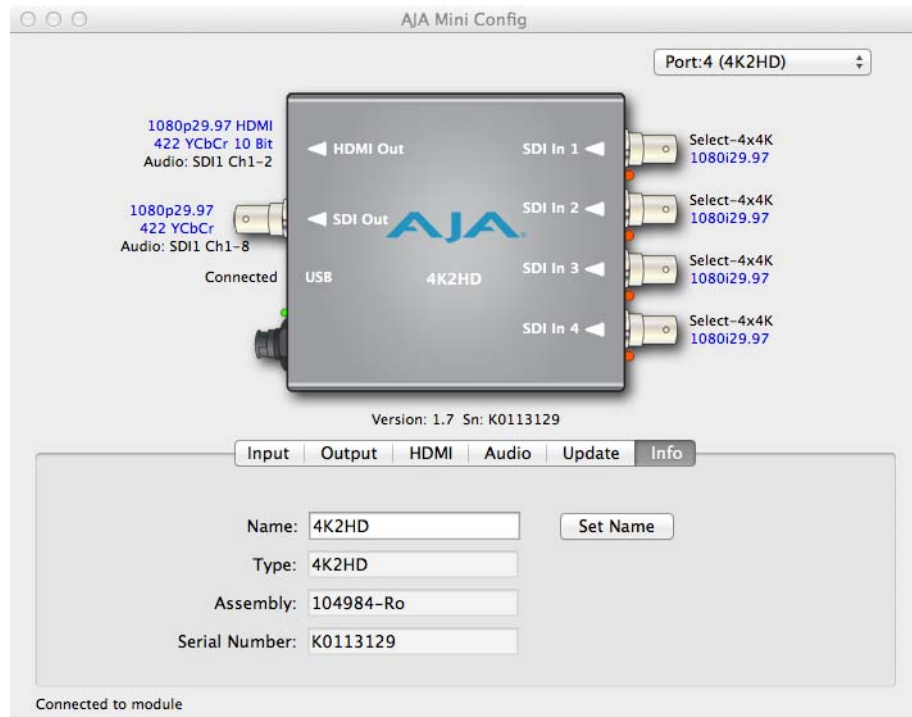
1. Check the AJA website for new MiniConfig software for your Mini-Converter. If new software is found, download it, uncompress the file archive (zip), and install the MiniConfig software on your Mac or PC.
2. Connect the Mini-Converter to a Mac or PC via a USB port on the computer and run the new MiniConfig software just downloaded.
3. Click on the Update tab screen.
4. Check the Installed version level against the Desired version level. If the Desired is newer, then click the *Update* button to download the new firmware to the Mini-Converter.

Progress will be shown via the Progress thermometer bar, and when completed an “Update Succeeded” message appears.

Info Tab Screen

This screen provides basic information about the Mini-Converter. This information is mostly useful when calling AJA Support for service or technical support.

Figure 12. MiniConfig, Info Screen



Name: This field allows you to give your Mini-Converter a name. This may be useful if you have several Mini-Converters attached to a Mac/PC via USB so you can distinguish one of them easily (especially if they’re the same model).

Type: This is the factory set model name of the Mini-Converter (4K2HD).

Assembly: This is the factory assembly number.

Serial Number: This is the factory set unique serial number of your 4K2HD. If you ever call AJA Support for service, you may be asked for this number.

Appendix A: Specifications

Supported Video Formats

- SD/HD
 - 8, 10 bit
- 4K
 - 8, 10 bit for 4:2:2 video
 - 8 bit for 4:4:4 video (10 bit 4:4:4 video will be rounded into 8bit)

- Unsupported Formats**
- 3D not supported.
 - XYZ color space is not supported.

Video Input

4K, 3G, HD, and SD-SDI (auto-selected), 4x BNC

4K Inputs Supported

- 4 x 1.5Gb SDI:*
- 4 x 1920x1080 p, 4:2:2, 23.98, 24, 25, 29.97, 30
 - 4 x 1920x1080 psf, 4:2:2, 23.98, 24, 25, 29.97, 30
 - 4 x 2048x1080 p, 4:2:2, 23.98, 24
 - 4 x 2048x1080 psf, 4:2:2, 23.98, 24
- 2 x dual-stream 3Gb SDI (level B):*
- 2 x 2 x 1920x1080 p, 4:2:2, 23.98, 24, 25, 29.97, 30
 - 2 x 2 x 1920x1080 psf, 4:2:2, 23.98, 24, 25, 29.97, 30
 - 2 x 2 x 2048x1080 p, 4:2:2, 23.98, 24
 - 2 x 2 x 2048x1080 psf, 4:2:2, 23.98, 24
- 4 x 3Gb SDI:*
- 4 x 1920x1080 p, 4:2:2, 50, 59.94, 60
 - 4 x 1920x1080 p, 4:4:4, 23.98, 24, 25, 29.97, 30
 - 4 x 1920x1080 psf, 4:4:4, 23.98, 24, 25, 29.97, 30
 - 4 x 2048x1080 p, 4:4:4, 23.98, 24
 - 4 x 2048x1080 psf, 4:4:4, 23.98, 24

HD Inputs Supported

- 1280x720 p 4:2:2 50, 59.94, 60
- 1280x720 p 4:2:2 25, 29.97, 30
- 1920x1080 i 4:2:2 25, 29.97, 30
- 1920x1080 p 4:2:2 23.98, 24, 25, 29.97, 30
- 1920x1080 psf 4:2:2 23.98, 24, 25, 29.97, 30
- 2048x1080 p 4:2:2 23.98, 24
- 2048x1080 psf 4:2:2 23.98, 24

- 3G Inputs Supported**
- 1920x1080 i 4:4:4, 25, 29.97, 30
 - 1920x1080 p 4:4:4, 25, 29.97, 30
 - 1920x1080 psf 4:4:4, 23.98, 24, 25, 29.97, 30
 - 2048x1080 p 4:4:4, 23.98, 24
 - 2048x1080 psf 4:4:4, 23.98, 24
 - 1920x1080 p 4:2:2, 50, 59.94, 60

- SD Inputs Supported**
- 525i
 - 625i

Video Output

- HDMI v1.4a, 30/36 bits per pixel, RGB or YUV, HDMI Standard Type A connector

NOTE: If a connected monitor doesn't support HDMI protocol the unit automatically switches to DVI protocol (which does not pass audio).

- HD/3G-SDI, BNC

Audio Formats

Audio Inputs SDI embedded audio, 24-bit, 8-channel

- Audio Outputs**
- HDMI embedded audio, 24-bit, 8-channel
 - SDI embedded audio, 24-bit, 8-channel

Physical

Power +5-20 VDC Regulated, 8 Watts, Power Supply Required (included with purchase)

Size 5.8" x 3.9" x 0.8" (147 mm x 99 mm x 20 mm) including connectors

Appendix B: Safety and Compliance

Federal Communications Commission (FCC) Compliance Notices

Class B Interference Statement

This equipment has been tested and found to comply with the limits for a Class B digital device, pursuant to Part 15, Subpart B of the FCC Rules. These limits are designed to provide reasonable protection against harmful interference in a residential installation. This equipment generates, uses, and can radiate radio frequency energy and, if not installed and used in accordance with the instructions, may cause harmful interference to radio communications. However, there is no guarantee that interference will not occur in a particular installation. If this equipment does cause harmful interference to radio or television reception, which can be determined by turning the equipment off and on, the user is encouraged to try to correct the interference by one or more of the following measures:

- Reorient or relocate the receiving antenna.
- Increase the separation between the equipment and receiver.
- Connect the equipment into an outlet on a circuit different from that to which the receiver is connected.
- Consult the dealer or an experienced radio/TV technician for help.

FCC Caution

This device complies with Part 15 of the FCC Rules. Operation is subject to the following two conditions: (1) This device may not cause harmful interference, and (2) this device must accept any interference received, including interference that may cause undesired operation.

Canadian ICES Statement

Canadian Department of Communications Radio Interference Regulations

This digital apparatus does not exceed the Class B limits for radio-noise emissions from a digital apparatus as set out in the Radio Interference Regulations of the Canadian Department of Communications. This Class B digital apparatus complies with Canadian ICES-003.

Règlement sur le brouillage radioélectrique du ministère des Communications

Cet appareil numérique respecte les limites de bruits radioélectriques visant les appareils numériques de classe B prescrites dans le Règlement sur le brouillage radioélectrique du ministère des Communications du Canada. Cet appareil numérique de la Classe B est conforme à la norme NMB-003 du Canada.

European Union and European Free Trade Association (EFTA)

Regulatory Compliance

This equipment may be operated in the countries that comprise the member countries of the European Union and the European Free Trade Association. These countries, listed in the following paragraph, are referred to as The European Community throughout this document:

AUSTRIA, BELGIUM, BULGARIA, CYPRUS, CZECH REPUBLIC, DENMARK, ESTONIA, FINLAND, FRANCE, GERMANY, GREECE, HUNGARY, IRELAND, ITALY, LATVIA, LITHUANIA, LUXEMBOURG, MALTA, NETHERLANDS, POLAND, PORTUGAL, ROMANIA, SLOVAKIA, SLOVENIA, SPAIN, SWEDEN, UNITED KINGDOM, ICELAND, LICHENSTEIN, NORWAY, SWITZERLAND

Declaration of Conformity

Marking by this symbol indicates compliance with the Essential Requirements of the EMC Directive of the European Union 2004/108/EC.



This equipment meets the following conformance standards:

- Safety:* EN 60065: 2002 + A1: 2006 + A11: 2008 + A2: 2010 + A12: 2011 (GS License)
IEC 60065: 2001 + A1: 2005 + A2: 2010 (CB Scheme Report/Certificate)
Additional licenses issued for specific countries available on request.
- Emissions:* EN 55103-1: 2009, CISPR 22: 2008, EN 61000-3-2: 2009-04, EN 61000-3-3: 2008-06
Environments: E2, E3 and E4
- Immunity:* EN 55103-2: 2009, EN 61000-4-2: 2008-12, EN 61000-4-3: 2010-04, EN 61000-4-4: 2011-03,
EN 61000-4-5: 2005-11, EN 61000-4-6: 2008-10, EN 61000-4-11: 2004-03
Environments: E2, E3 and E4
- The product is also licensed for additional country specific standards as required for the International Marketplace.



Warning!

This is a Class B product. In a domestic environment, this product may cause radio interference, in which case, the user may be required to take appropriate measures.

Achtung! Dieses ist ein Gerät der Funkstörgrenzwertklasse B. In Wohnbereichen können bei Betrieb dieses Gerätes Rundfunkstörungen auftreten, in welchen Fällen der Benutzer für entsprechende Gegenmaßnahmen verantwortlich ist.

Attention! Ceci est un produit de Classe B. Dans un environnement domestique, ce produit risque de créer des interférences radioélectriques, il appartiendra alors à l'utilisateur de prendre les mesures spécifiques appropriées.

Korea KCC Compliance Statement

B급 기기 (가정용 방송통신기자재)	이 기기는 가정용(B급) 전자파적합기기로서 주로 가정에서 사용하는 것을 목적으로 하며, 모든 지역에서 사용할 수 있습니다.
Class B (Broadcasting Communication Equipment for Home Use)	As an electromagnetic wave equipment for home use (Class B), this equipment is intended to use mainly for home use and may be used in all areas.

Taiwan Compliance Statement

This is a Class B product based on the standard of the Bureau of Standards, Metrology and Inspection (BSMI) CNS 13438, Class B.

Japanese Compliance Statement

2. Class B ITE

この装置は、クラス B 情報技術装置です。この装置は、家庭環境で使用することを目的としていますが、この装置がラジオやテレビジョン受信機に近接して使用されると、受信障害を引き起こすことがあります。

取扱説明書に従って正しい取り扱いをして下さい。

VCCI-B

This is a Class B product based on the standard of the VCCI Council. If this is used near a radio or television receiver in a domestic environment, it may cause radio interference. Install and use the equipment according to the instruction manual.

Translated Warning and Caution Messages

The following caution statements, warning conventions, and warning messages apply to this product and manual.



Warning Symbol



Caution Symbol

Before Operation Please Read These Instructions

**Warning!**

Read and follow all warning notices and instructions marked on the product or included in the documentation.

Avertissement ! Lisez et conformez-vous à tous les avis et instructions d'avertissement indiqués sur le produit ou dans la documentation.

Warnung! Lesen und befolgen Sie die Warnhinweise und Anweisungen, die auf dem Produkt angebracht oder in der Dokumentation enthalten sind.

¡Advertencia! Lea y siga todas las instrucciones y advertencias marcadas en el producto o incluidas en la documentación.

Aviso! Leia e siga todos os avisos e instruções assinalados no produto ou incluídos na documentação.

Avviso! Leggere e seguire tutti gli avvisi e le istruzioni presenti sul prodotto o inclusi nella documentazione.

**Warning!**

Do not use this device near water and clean only with a dry cloth.

Avertissement! N'utilisez pas cet appareil près de l'eau et nettoyez-le seulement avec un tissu sec..

Warnung! Das Gerät nicht in der Nähe von Wasser verwenden und nur mit einem trockenen Tuch säubern.

¡Advertencia! No utilice este dispositivo cerca del agua y límpielo solamente con un paño seco.

Aviso! Não utilize este dispositivo perto da água e limpe-o somente com um pano seco.

Avviso! Non utilizzare questo dispositivo vicino all'acqua e pulirlo soltanto con un panno asciutto.

**Warning!**

Do not block any ventilation openings. Install in accordance with the manufacturer's instructions.

Avertissement ! Ne bloquez aucune ouverture de ventilation. Suivez les instructions du fabricant lors de l'installation.

Warnung! Die Lüftungsöffnungen dürfen nicht blockiert werden. Nur gemäß den Anweisungen des Herstellers installieren.

¡Advertencia! No bloquee ninguna de las aberturas de la ventilación. Instale de acuerdo con las instrucciones del fabricante.

Aviso! Não obstrua nenhuma das aberturas de ventilação. Instale de acordo com as instruções do fabricante.

Avviso! Non ostruire le aperture di ventilazione. Installare in conformità con le istruzioni del fornitore.

**Warning!**

Do not install near any heat sources such as radiators, heat registers, stoves, or other apparatus (including amplifiers) that produce heat.

Avertissement ! N'installez pas l'appareil près d'une source de chaleur telle que des radiateurs, des bouches d'air de chauffage, des fourneaux ou d'autres appareils (amplificateurs compris) qui produisent de la chaleur.

Warnung! Nicht in der Nähe von Wärmequellen wie Heizkörpern, Heizregistern, Öfen oder anderen Wärme erzeugenden Geräten (einschließlich Verstärkern) aufstellen.

¡Advertencia! No instale cerca de fuentes de calor tales como radiadores, registros de calor, estufas u otros aparatos (incluidos amplificadores) que generan calor.

Aviso! Não instale perto de nenhuma fonte de calor tal como radiadores, saídas de calor, fogões ou outros aparelhos (incluindo amplificadores) que produzam calor.

Avviso! Non installare vicino a fonti di calore come termosifoni, diffusori di aria calda, stufe o altri apparecchi (amplificatori compresi) che emettono calore.

**Warning!**

Do not defeat the safety purpose of the polarized or grounding-type plug. A polarized plug has two blades with one wider than the other. A grounding type plug has two blades and a third grounding prong. The wide blade or the third prong are provided for your safety. If the provided plug does not fit into your outlet, consult an electrician for replacement of the obsolete outlet.

Avertissement! La sécurité de la prise polarisée ou de la prise de type mise à la terre ne doit en aucun cas être empêchée de fonctionner. Une prise polarisée a deux broches, l'une étant plus large que l'autre. Une prise de type mise à la terre a deux broches et une troisième broche pour la mise à la terre. La broche large ou la troisième broche sont fournies pour votre sécurité. Si la prise fournie ne s'insère pas dans votre prise femelle, consultez un électricien pour le remplacement de la prise femelle obsolète.

Warnung! Der Sicherheitszweck des gepolten bzw. Schukosteckers ist zu berücksichtigen. Ein gepolter Stecker verfügt über zwei Pole, von denen einer breiter als der andere ist. Ein Schukostecker verfügt neben den zwei Polen noch über einen dritten Pol zur Erdung. Der breite Pol bzw. der Erdungspol dienen der Sicherheit. Wenn der zur Verfügung gestellte Stecker nicht in Ihren Anschluss passt, konsultieren Sie einen Elektriker, um den veralteten Anschluss zu ersetzen.

¡Advertencia! No eche por tierra la finalidad del tipo de enchufe polarizado con conexión a tierra. Un enchufe polarizado tiene dos espigas, una más ancha que la otra. Un enchufe con conexión a tierra tiene dos espigas iguales y una tercera espiga que sirve para la conexión a tierra. La espiga ancha, o la tercera espiga, sirven para su seguridad. Si el enchufe suministrado no encaja en el tomacorriente, consulte con un electricista para reemplazar el tomacorriente obsoleto.

Aviso! Não anule a finalidade da segurança da ficha polarizada ou do tipo ligação terra. Uma ficha polarizada tem duas lâminas sendo uma mais larga do que a outra. Uma ficha do tipo de ligação à terra tem duas lâminas e um terceiro terminal de ligação à terra. A lâmina larga ou o terceiro terminal são fornecidos para sua segurança. Se a ficha fornecida não couber na sua tomada, consulte um electricista para a substituição da tomada obsoleta.

Avviso! Non compromettere la sicurezza della spina polarizzata o con messa a terra. Una spina polarizzata ha due spinotti, di cui uno più largo. Una spina con messa a terra ha due spinotti e un terzo polo per la messa a terra. Lo spinotto largo o il terzo polo sono forniti per motivi di sicurezza. Se la spina fornita non si inserisce nella presa di corrente, contattare un elettricista per la sostituzione della presa obsoleta.

**Warning!**

Since the Mains plug is used as the disconnection for the device, it must remain readily accessible and operable.

Avertissement! Puisque la prise principale est utilisée pour débrancher l'appareil, elle doit rester aisément accessible et fonctionnelle.

Warnung! Da der Netzstecker als Trennvorrichtung dient, muss er stets zugänglich und funktionsfähig sein.

¡Advertencia! Puesto que el enchufe de la red eléctrica se utiliza como dispositivo de desconexión, debe seguir siendo fácilmente accesible y operable.

Aviso! Dado que a ficha principal é utilizada como a desconexão para o dispositivo, esta deve manter-se prontamente acessível e funcional.

Avviso! Poiché il cavo di alimentazione viene usato come dispositivo di sconnessione, deve rimanere prontamente accessibile e operabile.

**Warning!**

Protect the power cord from being walked on or pinched particularly at plugs, convenience receptacles, and the point where they exit from the device.

Avertissement! Protégez le cordon d'alimentation pour que l'on ne marche pas dessus ou qu'on le pince, en particulier au niveau des prises mâles, des réceptacles de convenance, et à l'endroit où il sort de l'appareil.

Warnung! Vermeiden Sie, dass auf das Netzkabel getreten oder das Kabel geknickt wird, insbesondere an den Steckern, den Steckdosen und am Kabelausgang am Gerät.

¡Advertencia! Proteja el cable de energía para que no se le pise ni apriete, en especial cerca del enchufe, los receptáculos de conveniencia y el punto del que salen del equipo.

Aviso! Proteja o cabo de alimentação de ser pisado ou de ser comprimido particularmente nas fichas, em tomadas de parede de conveniência e no ponto de onde sai do dispositivo.

Avviso! Proteggere il cavo di alimentazione in modo che nessuno ci cammini sopra e che non venga schiacciato soprattutto in corrispondenza delle spine e del punto in cui esce dal dispositivo.

**Warning!**

Unplug this device during lightning storms or when unused for long periods of time.

Avertissement! Débranchez cet appareil pendant les orages avec éclairs ou s'il est inutilisé pendant de longues périodes.

Warnung! Das Gerät ist bei Gewitterstürmen oder wenn es über lange Zeiträume ungenutzt bleibt vom Netz zu trennen.

¡Advertencia! Desenchufe este dispositivo durante tormentas eléctricas o cuando no se lo utilice por largos periodos del tiempo.

Aviso! Desconecte este dispositivo da tomada durante trovoadas ou quando não é utilizado durante longos períodos de tempo.

Avviso! Utilizzare soltanto i collegamenti e gli accessori specificati e/o venduti dal produttore, quali il treppiedi e l'esoscheletro.

**Warning!**

Do not open the chassis. There are no user-serviceable parts inside. Opening the chassis will void the warranty unless performed by an AJA service center or licensed facility.

Avertissement! Ne pas ouvrir le châssis. Aucun élément à l'intérieur du châssis ne peut être réparé par l'utilisateur. La garantie sera annulée si le châssis est ouvert par toute autre personne qu'un technicien d'un centre de service ou d'un établissement agréé AJA.

Warnung! Öffnen Sie das Gehäuse nicht. Keine der Geräteteile können vom Benutzer gewartet werden. Durch das Öffnen des Gehäuses wird die Garantie hinfällig, es sei denn, solche Wartungsarbeiten werden in einem AJA-Service-Center oder einem lizenzierten Betrieb vorgenommen.

¡Advertencia! No abra el chasis. El interior no contiene piezas reparables por el usuario. El abrir el chasis anulará la garantía a menos que se lo haga en un centro de servicio AJA o en un local autorizado.

Advertência! Não abra o chassi. Não há internamente nenhuma peça que permita manutenção pelo usuário. Abrir o chassi anula a garantia, a menos que a abertura seja realizada por uma central de serviços da AJA ou por um local autorizado.

Avvertenza! Non aprire lo chassis. All'interno non ci sono parti riparabili dall'utente. L'apertura dello chassis invaliderà la garanzia se non viene effettuata da un centro ufficiale o autorizzato AJA.

**Warning!**

This device is a Class B product. Operation of this equipment in a residential area is likely to cause harmful interference, in which case users will be required to take whatever measures may be necessary to correct the interference at their own expense.

Attention! Le périphérique est un produit de Classe B. Le fonctionnement de cet équipement dans une zone résidentielle risque de causer des interférences nuisibles, auquel cas l'utilisateur devra y remédier à ses propres frais.

Achtung! Dies ist ein Gerät der Klasse B. Bei Einsatz des Geräts in Wohngebieten kann es Störungen des Radio- und Fernsehempfangs verursachen. In diesem Fall muss der Benutzer alle notwendigen Maßnahmen ergreifen, die möglicherweise nötig sind, um die Störungen auf eigene Rechnung zu beheben.

¡Precaución! Este es un producto clase B. El uso de este equipo en áreas residenciales puede causar interferencias nocivas, en cuyo caso, se requerirá que los usuarios tomen cualquier medida necesaria para corregir la interferencia por cuenta propia.

Cuidado! Este dispositivo é um produto Classe B. Operar este equipamento em uma área residencial provavelmente causará interferência prejudicial; neste caso, espera-se que os usuários tomem as medidas necessárias para corrigir a interferência por sua própria conta.

Attenzione! Questo dispositivo è un prodotto di Classe B. Il funzionamento di questo apparecchio in aree residenziali potrebbe causare interferenze dannose, nel cui caso agli utenti verrà richiesto di adottare tutte le misure necessarie per porre rimedio alle interferenze a proprie spese..

**Warning!**

Disconnect the external AC power supply line cord(s) from the mains power before moving the unit.

Avertissement ! Retirez le ou les cordons d'alimentation en CA de la source d'alimentation principale lorsque vous déplacez l'appareil.

Warnung! Trennen Sie die Wechselstrom-Versorgungskabel vom Netzstrom, bevor Sie das Gerät verschieben.

¡Advertencia! Cuando mueva la unidad desenchufe de la red eléctrica el/los cable(s) de la fuente de alimentación CA tipo brick.

Advertência! Remova os cabos CA de alimentação brick da rede elétrica ao mover a unidade.

Avvertenza! Scollegare il cavo dell'alimentatore quando si sposta l'unità.

**Warning!**

Refer all servicing to qualified service personnel. Servicing is required when the device has been damaged in any way, such as power-supply cord or plug is damaged, liquid has been spilled or objects have fallen into the device, the device has been exposed to rain or moisture, does not operate normally, or has been dropped.

Avertissement ! Référez-vous au personnel de service qualifié pour tout entretien. L'entretien est exigé quand l'appareil a été endommagé de quelque manière que ce soit, par exemple lorsque le cordon d'alimentation ou la prise sont endommagés, que du liquide a été versé ou des objets sont tombés dans l'appareil, que l'appareil a été exposé à la pluie ou à l'humidité, ne fonctionne pas normalement ou est tombé.

Warnung! Das Gerät sollte nur von qualifizierten Fachkräften gewartet werden. Eine Wartung ist fällig, wenn das Gerät in irgendeiner Weise beschädigt wurde, wie bei beschädigtem Netzkabel oder Netzstecker, falls Flüssigkeiten oder Objekte in das Gerät gelangen, das Gerät Regen oder Feuchtigkeit ausgesetzt wurde, nicht ordnungsgemäß funktioniert oder fallen gelassen wurde.

¡Advertencia! Consulte al personal calificado por cuestiones de reparación. El servicio de reparación se requiere cuando el dispositivo ha recibido cualquier tipo de daño, por ejemplo cable o espigas dañadas, se ha derramado líquido o se han caído objetos dentro del dispositivo, el dispositivo ha sido expuesto a la lluvia o humedad, o no funciona de modo normal, o se ha caído.

Aviso! Remeta todos os serviços de manutenção para o pessoal de assistência qualificado. A prestação de serviços de manutenção é exigida quando o dispositivo foi danificado mediante qualquer forma, como um cabo de alimentação ou ficha que se encontra danificado/a, quando foi derramado líquido ou caíram objectos sobre o dispositivo, quando o dispositivo foi exposto à chuva ou à humidade, quando não funciona normalmente ou quando foi deixado cair.

Avviso! Fare riferimento al personale qualificato per tutti gli interventi di assistenza. L'assistenza è necessaria quando il dispositivo è stato danneggiato in qualche modo, ad esempio se il cavo di alimentazione o la spina sono danneggiati, è stato rovesciato del liquido è stato rovesciato o qualche oggetto è caduto nel dispositivo, il dispositivo è stato esposto a pioggia o umidità, non funziona correttamente o è caduto.

Warranty Information

Limited Warranty

AJA Video warrants that this product will be free from defects in materials and workmanship for a period of five years from the date of purchase. If a product proves to be defective during this warranty period, AJA Video, at its option, will either repair the defective product without charge for parts and labor, or will provide a replacement in exchange for the defective product.

In order to obtain service under this warranty, you the Customer, must notify AJA Video of the defect before the expiration of the warranty period and make suitable arrangements for the performance of service. The Customer shall be responsible for packaging and shipping the defective product to a designated service center nominated by AJA Video, with shipping charges prepaid. AJA Video shall pay for the return of the product to the Customer if the shipment is to a location within the country in which the AJA Video service center is located. Customer shall be responsible for paying all shipping charges, insurance, duties, taxes, and any other charges for products returned to any other locations.

This warranty shall not apply to any defect, failure or damage caused by improper use or improper or inadequate maintenance and care. AJA Video shall not be obligated to furnish service under this warranty a) to repair damage resulting from attempts by personnel other than AJA Video representatives to install, repair or service the product, b) to repair damage resulting from improper use or connection to incompatible equipment, c) to repair any damage or malfunction caused by the use of non-AJA Video parts or supplies, or d) to service a product that has been modified or integrated with other products when the effect of such a modification or integration increases the time or difficulty of servicing the product.

THIS WARRANTY IS GIVEN BY AJA VIDEO IN LIEU OF ANY OTHER WARRANTIES, EXPRESS OR IMPLIED. AJA VIDEO AND ITS VENDORS DISCLAIM ANY IMPLIED WARRANTIES OF MERCHANTABILITY OR FITNESS FOR A PARTICULAR PURPOSE. AJA VIDEO'S RESPONSIBILITY TO REPAIR OR REPLACE DEFECTIVE PRODUCTS IS THE WHOLE AND EXCLUSIVE REMEDY PROVIDED TO THE CUSTOMER FOR ANY INDIRECT, SPECIAL, INCIDENTAL OR CONSEQUENTIAL DAMAGES IRRESPECTIVE OF WHETHER AJA VIDEO OR THE VENDOR HAS ADVANCE NOTICE OF THE POSSIBILITY OF SUCH DAMAGES.

Index

Numerics

2K Crop setting 14
3G-B Mode setting 14
3Gb Mode setting 15
4K Convert setting 14
4K Down Conversion Mode 5
4K2HD Overview 5

A

Audio Offset In Frames setting 16
Audio Selections 16
Audio Tab Screen 16

B

Bit Depth (input) setting 13
Bit Depth (output) setting 15
Block Diagram 8

C

Center Cut Mode 5
Color Dithering setting 15
Color Space setting 13, 15

D

default operation 6
dual stream 3G input 6
Dual-link 1.5Gb HDInput 6

F

Features 7
Firmware version 12

H

HDMI and SDI output differences 6
HDMI Channel Count setting 16
HDMI Tab Screen 15
HDMI/DVI setting 15

I

I/O Connections 8
Info Tab Screen 18
Input Source setting 16
Input Tab Screen 13
Input Video Selections 13
Installation Overview 9

K

K Dual-stream 3Gb SDI Input 6

M

MiniConfig

Operation 11
Screen Description 12
Starting 10

MiniConfig Control 6
MiniConfig installation
Mac 10
PC 10

Mini-Converters
Multiple 12
Multiple Mini-Converters 12
Multiple SDI Inputs 6

N

Non-4K Mode 5

O

Operating Modes 5
Output Tab Screen 14
Output Video Selections 14

P

Passthrough 15

R

RGB Range (input) setting 13
RGB Range (output) setting 15

S

SDI and HDMI output differences 6
SDI Passthrough 6
Serial number 12
Single HD Input 6
Single SD Input 6
Software Update Procedure 17
Specifications 19

T

Type of converter 12

U

Update Tab Screen 17

V

Valid SDI video required 6
Video Format setting 14
Video Output 6
Video Source setting 13