



Release Notes—KONA LHi version 1.1

General

If you are installing your KONA hardware into a computer that has previously had another video capture card or drivers, we recommend running the AJA KONA Conflict Checker utility BEFORE installing the KONA software. The AJA KONA Conflict Checker will help you identify old drivers or software files that need to be removed before installing the new software. Also, please read the “ReadMeFirst.PDF” document on the installation CD, if you are installing for the first time.

Installation Notes—Please Read

Note: *Version 1.1 is only for use with Final Cut Studio Version 2. Earlier Final Cut Pro versions should not use this software. Please ensure you use the correct software for your system.*

AJA provides separate installers for each board that only install the board-specific driver for a given KONA board. Please ensure that you use the correct installer for the KONA model present in your system. If you install the wrong software, the KONA Control Panel will report “no board” due to incorrect driver installation. Also, if you should ever wish to regress to an earlier version of software, you will have to perform the following steps to ensure proper operation. *Do not try to simply run an older KONA installer over a newer version*—doing so will not properly remove the newer components and will lead to improper operation.

1. Run the KONA Uninstaller from the current installation.
2. Install the desired KONA software using its installer package.

New Features

- Four Analog Audio output operating levels are now implemented. They are:
 - Pro U.S. levels (+24dBu = 0dBFS)
 - European I levels (+18dBu = 0dBFS)
 - Consumer high levels (+12dBu = 0dBFS)
 - European II levels (+15dBu = 0dBFS)
- HDMI auto detects color space on attached external monitor.
- HDMI input detects 1080p59, 1080p59.94 and 1080p60
- HDMI RGB VIdео Output Range selections now offered: *full* or *SMPTE* on HDMI RGB output

Improvements

- Improved downconverter operation when 720p59.94 or 1080p59.94 are converted to 525i29.97 (as seen on analog composite output).
- Improved audio monitor output levels when switching main output levels.

Notes:

- LTC capabilities are not enabled with this software release. The LTC features will be enabled with a later software release.
- 3G-SDI Level A compatibility is enabled with this software release. 3G-SDI Level B support will be enabled with a later software release.



Using the Installer

The KONA LHi installer allows a variety of choices directly from the installer screens. You can check to install only the driver, or only certain Easy Setups, or everything (all Easy Setups and the driver). Clicking in a box selects an item for installation. If you click on the “Kona” box, all Easy Setups will be installed. If instead you click on the triangle next to the “Kona” box, you’ll then see all the individual Easy Setup choices.

By default, the Easy Setup choice “Base” setups is selected, which is usually right for most users. In addition to that, you may wish to select some additional choices that correspond to your workflow (HDV, 1080p, etc.)

After installation, you can find the Easy Setups installed in the usual Final Cut Easy Setups folder (Base Setups are at the top level—all others are in folders with appropriate names): *Macintosh HD/Library/Application Support/ Final Cut Pro System Support/Custom Settings/ Kona LHi Easy Setups*

Recommended Configuration for Mac Computers

For information on Mac computer slot configuration for KONA cards, please visit the following page on the AJA website: <http://www.aja.com/support/kona/kona-system-configuration.php>

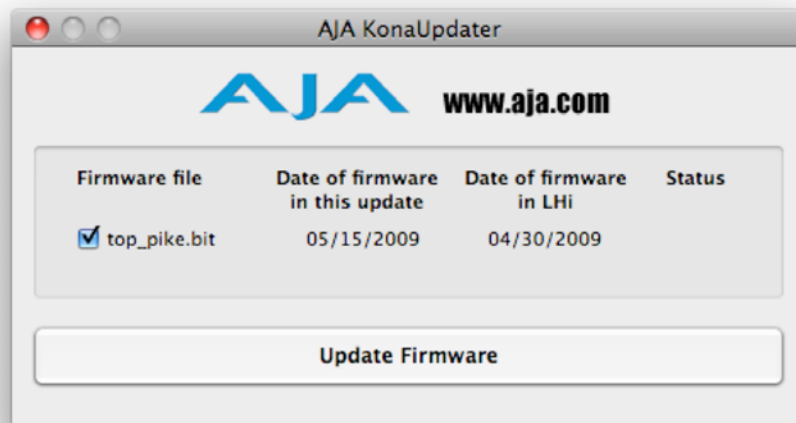
Updating Firmware

When you install the KONA LHi software—this or any version— the updater application is installed in the Applications > AJA Utilities folder. This updater automatically checks the version of the firmware in the KONA LHi every time you start up your Macintosh and compares it against the version of firmware that is part of the driver. If the two versions don't match, the updater presents you with the opportunity to update the firmware in your LHi. We suggest that you perform the firmware update whenever you're asked.

Note: Since the automatic firmware updater starts up very early in the boot process, other finder windows that launch later can hide the updater window. So, whenever you install software update, it's a good idea to close other windows on the screen, so that after the Macintosh reboots you'll be able to see if the updater has launched.

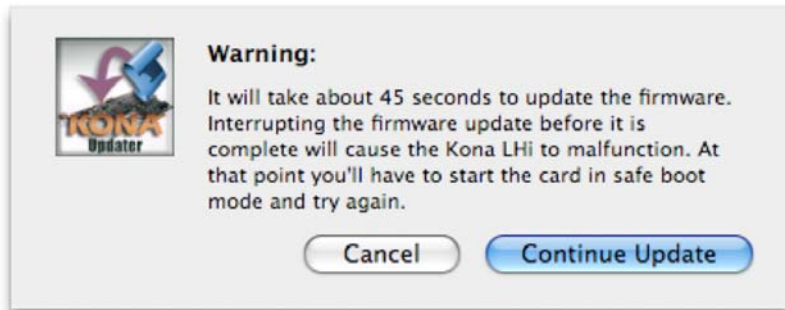
If the firmware updater comes up it simply means the installer has detected out of date firmware. Follow this procedure to update it:

1. **Important:** while updating, do not turn power off to the Mac. Also, do not quit the firmware updater once it has started actually performing the update. When the updater first starts, you'll see the following screen:

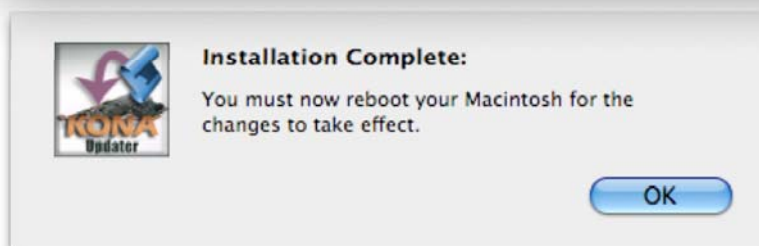


2. Notice the checkboxes. Any items checked are out of date and will be updated when you click on the “Update Firmware” button at the bottom of the screen. Items not checked are up to date and will not be updated.

3. Click the “Update Firmware” button to begin the update. As soon as you do, the updater software displays a warning reminder so you won’t disrupt the update while it is in process. Click the “Continue Update” button after reading the warning.



4. As the updater begins downloading software to LHi and installing it, the updater will display its progress on the Updater screen. After all the checked items are displayed with the “Success” status label, the updating process is complete. When this happens, you’ll see an *Installation Complete* dialog—click OK.



Select “Restart” under the Mac Apple menu. Once it has rebooted you can use the LHi.

Safe Boot Procedure

During the “Updating Firmware” procedure, should the process be interrupted due to power failure, computer crash, or other accident, the LHi could be left in an inoperable state. If this happens, please follow the procedure below to safely restore the card.

1. Power the Mac off (Shutdown from Finder).
2. Remove the Mac chassis access panel and set it aside.
3. Visually locate the KONA LHi card in the chassis (do not remove it).
4. Visually locate the “Safe Boot” push button switch on the LHi card (see photo below for reference).
5. Press and hold down the button switch. While pressing the button, also press the Mac startup switch on the front of the mac.
6. Watch the LEDs on the KONA LHi card; when a red LED and green LED are both lit, you can then release the Safe Boot button.
7. Allow the Mac to fully start up.
8. Find the “AJA Utilities” folder on your Mac. Locate the “AJA KonaUpdater” utility and run it.
9. Install the firmware update as detailed in the previous procedure (“Updating Firmware”). As stated in that procedure, do not interrupt the firmware update operation while it is running.

