



Release Notes—KONA version 6.5

KONA Models Supported: KONA LSe, LHe, LHi, and KONA 3

General

If you are installing your KONA hardware into a computer that has previously had another video capture card or drivers, we recommend running the AJA KONA Conflict Checker utility BEFORE installing the KONA software. The AJA KONA Conflict Checker will help you identify old drivers or software files that need to be removed before installing the new software. Also, please read the “ReadMeFirst.PDF” document on the installation CD, particularly if you are installing for the first time.

Installation Notes—Please Read

Note: *Version 6.5 supports Final Cut Studio Version 3 and Version 2. Not all features will work with versions earlier than Version 3. Please ensure you use the correct software for your system. AJA Driver Compatibility as of KONA Version 6.5 software is as follows:*

FCP 7 - KONA Driver version 6.5 (Leopard OS compatible version)
FCP 6.0.x - KONA Driver version 6.0.3 (Leopard and Tiger OS compatible version)
FCP 6.0.x - KONA Driver versions 5.0 through 5.1 NDD (Leopard and Tiger OS compatible versions)

Also, please note that Easy Setups from earlier versions may not work properly in Final Cut Pro 7.

AJA provides separate installers for each board that only install the board-specific driver for a given KONA board. Please ensure that you use the correct installer for the KONA model present in your system. If you install the wrong software, the KONA Control Panel will report “no board” due to incorrect driver installation. Also, if you should ever wish to regress to an earlier version of software, you will have to perform the following steps to ensure proper operation. *Do not try to simply run an older KONA installer over a newer version*—doing so will not properly remove the newer components and will lead to improper operation.

1. Run the KONA Uninstaller from the current installation.
2. Install the desired KONA software using its installer package.

Note: If after installing the Version 6.5 update, you launch Final Cut Pro and receive a warning message during its launch concerning “Quartz Extreme”—then go to the AJA Control Panel’s *Setup* Tab screen and uncheck the *Enable Desktop Display* checkbox. Next, reboot the Macintosh—this will clear the error and ensure proper operation.

After installing the AJA driver, if you experience any issues booting your computer, restart the computer while holding down the shift key (safe boot), uninstall the AJA driver and then install the NDD driver version instead. The AJA KONA driver version 6.5 NDD is the same as driver version 6.5, but removes the Macintosh Desktop Display feature.



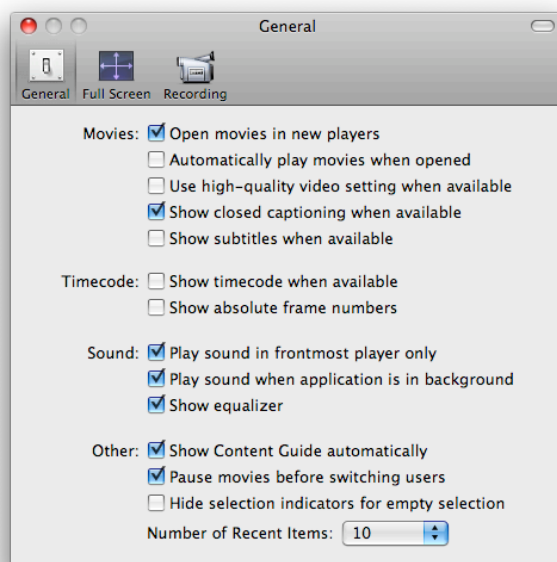
New Features

- Closed captioning support for Final Cut Pro 7, MacCaption, VTR Xchange, and AJA TV via QuickTime Closed Captioning Tracks (all supported KONAs—see Models Supported at top of bulletin). The QuickTime Closed Captioning Track is Apple's defined standard for closed captioning support.
- Full VANC data capture and playback support on a per-frame basis for all Apple ProRes formats.
- Support for new Apple ProRes formats (requires Final Cut Pro 7):
 - All KONAs support new Apple ProRes 422 (LT), Apple ProRes 422 (Proxy), and Apple ProRes 4444
 - KONA 3 additionally supports 10bit RGB/Dual Link capture and playback path using Apple ProRes 4444
- Expanded KONA LHi support:
 - Display of timecode in the Control Panel (near the LTC input icon)
 - HDMI/DVI detection of colorspace/protocol
 - Downstream Keyer added (DSK)
 - LTC input implemented
 - Analog audio output monitoring selection implemented
 - HDMI audio input channel selection
 - HDMI input/output auto-detection
 - 8 Channel HDMI audio output
- Support for Avid DNxHD QuickTime file playback and video output (KONA 3, LHi and LHe)
- Support for AVC-Intra QuickTime file playback and video output (KONA 3, LHi and LHe)
- Support for Cineform 3D QuickTime file playback and video output (KONA 3)

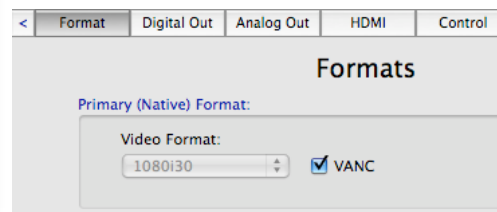
Improvements and Fixes

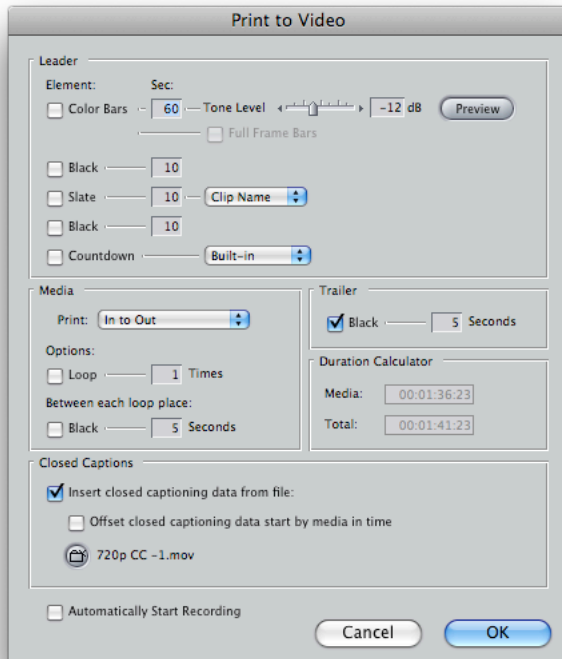
- Gamma range changes (All KONAs)

Closed Captioning and KONA

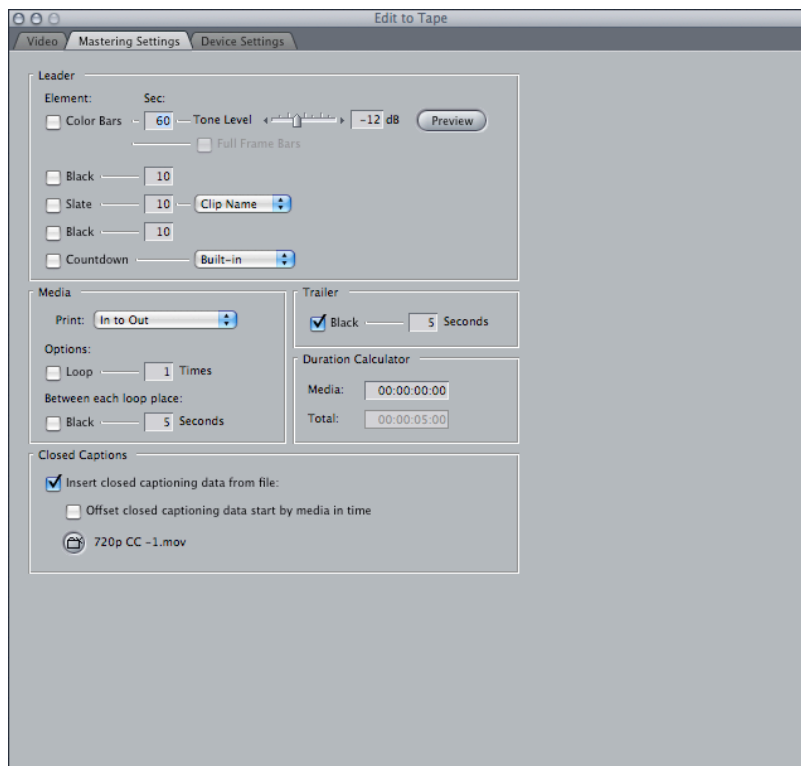


With this release, the supported KONA cards now support closed captioning for both SD (608—NTSC only) and HD (708), with Final Cut Pro 7 required. In standard definition (NTSC), the line 21 data is used to pass closed captioning. For HD, the KONA cards use the VANC meta data to pass closed captioning. The "VANC" checkbox in the AJA Control Panel must be checked in order to playback or capture HD/708 closed captioning. This is not necessary for 608/NTSC closed captioning





When you capture video with closed captioning using either VTR Xchange (version 4.1) or Final Cut Pro 7 (Final Cut Studio 3), an additional closed captioning track is generated inside the resulting QuickTime file. This track (CLCP) can be seen in QuickTime Player as long as the preference item “Show closed captioning when available” is checked. KONA cards can play out the closed captioning in Final Cut Pro 7 when doing a Print To Video, as long as the “Insert closed captioning data from file” checkbox is marked. Version 6.5 KONA’s AJA TV can also play the video with closed captioning.



When doing an Edit to Tape (mastering) in Final Cut Pro 7, you must also check an “Insert closed captioning data from file” checkbox. You must then choose a close captioning data file which can be a SCC file, or an existing QuickTime movie with a closed captioning track.

Closed Captioning Notes and Caveats

- Final Cut Pro 7 can also caption video using (SCC) files generated by MacCaption or other third party sources.
- Final Cut Pro 7 does not display closed captioning during normal playback; you must use Print to Video or Edit to Tape to see the closed captioning (with the appropriate checkboxes selected as discussed earlier). Also, read the “Closed Captioning and ProRes” topic presented later in this document.
- Closed captioning is not supported for DVCPRO HD clips at this time.
- Standard definition PAL closed captioning is not supported at this time.
- Closed captioning is not supported for RGB framebuffer formats at this time.
- QuickTime clips with closed captioning data that are subsequently transferred to Adobe AfterEffects and then rendered, will lose the closed captioning data.
- Video with closed captioning that undergoes hardware conversion on the input or output will lose the closed captioning data.
- Applications that support closed captioning include: Final Cut Pro 7 (Final Cut Studio 3), AJA VTR Xchange 4.1, AJA TV, Mac Caption, and Apple QuickTime Player.
- AJA capture I/O products that support closed captioning include: KONA 3, LSe, LHe, and LHi.

Closed Captioning and Apple ProRes 422

- Apple ProRes 422 now supports VANC data. Data is stored per frame. All VANC data is stored in the clip, which includes 708 closed captioning data and AFD.
- During playback of clips, supported KONA cards will output stored VANC data on: AJA TV, VTR Xchange, or Final Cut Pro 7 (as long as there are no applied RT effects).
- On capture, supported KONA cards can acquire VANC data from VTR Xchange or Final Cut Pro 7.
- Supported KONA cards support these new Apple ProRes types:
 - Apple ProRes 422 (LT)
 - Apple ProRes 422 (Proxy)
 - Apple ProRes 4444

Recommended Configuration for Mac Computers

For information on Mac computer slot configuration for KONA cards, please visit the following page on the AJA website: <http://www.aja.com/support/kona/kona-system-configuration.php>

